
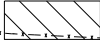

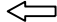
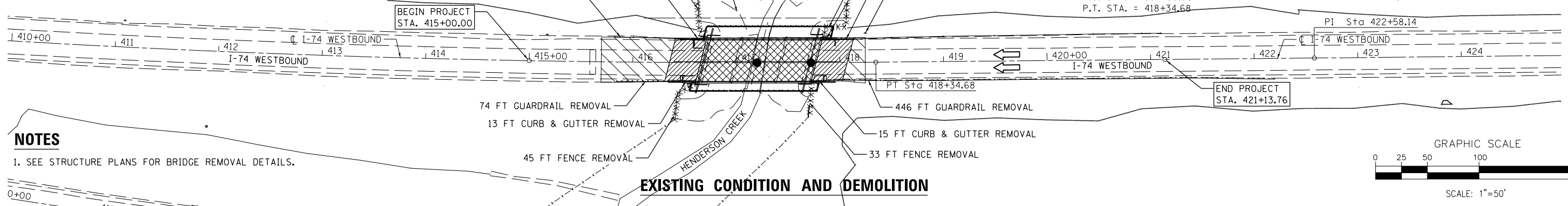


LEGEND

-  APPROACH SLAB REMOVAL (280 SQ YD)
-  PAVEMENT REMOVAL (399 SQ YD)
-  BRIDGE STRUCTURE REMOVAL (SEE STRUCTURE PLANS)
- XXXXXXXX FENCE REMOVAL
-  DIRECTION OF TRAFFIC

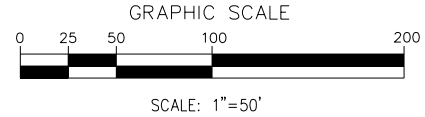
EXIST. CURVE WBC01
 PI STA. = 407+99.60
 $\Delta = 9^\circ 41' 02''$ (LT)
 $D = 0^\circ 28' 00''$
 $R = 12,277.66'$
 $T = 1,040.04'$
 $L = 2,075.12'$
 $E = 43.97'$
 $e = \dots$
 T.R. =
 S.E. RUN =
 P.C. STA. = 397+59.56
 P.T. STA. = 418+34.68



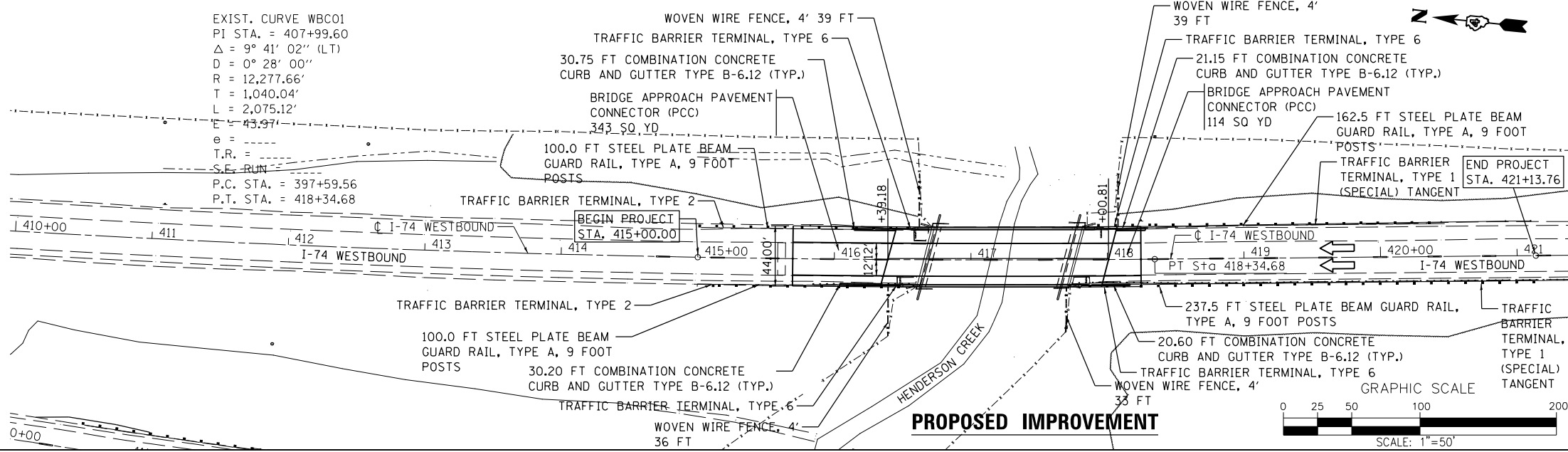
NOTES

1. SEE STRUCTURE PLANS FOR BRIDGE REMOVAL DETAILS.

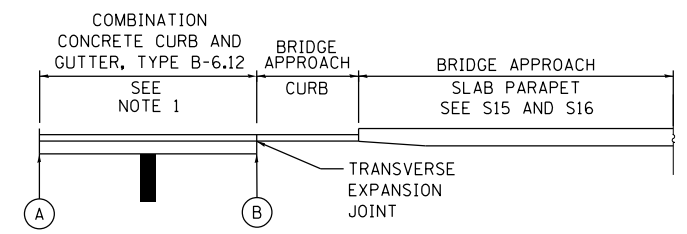
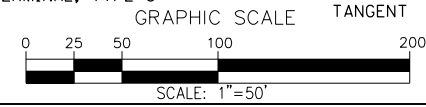
EXISTING CONDITION AND DEMOLITION



DATE	
BY	
PLAN	
NO.	
NO.	
NO.	
NO.	



PROPOSED IMPROVEMENT



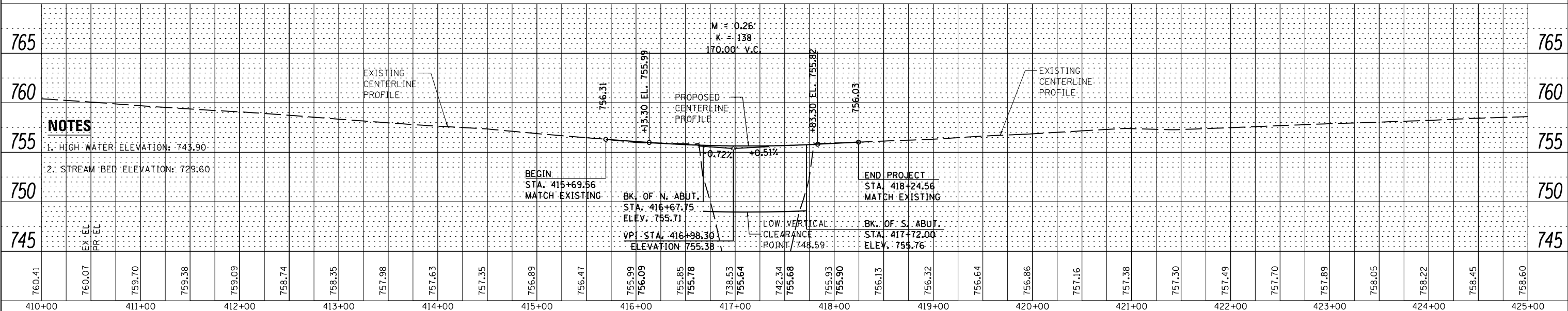
PLAN VIEW

- (A) NE CORNER: STA. 416+14.34
 NW CORNER: STA. 416+04.20
 SE CORNER: STA. 418+22.90
 SW CORNER: STA. 418+11.52
- (B) NE CORNER: STA. 416+45.14
 NW CORNER: STA. 416+34.15
 SE CORNER: STA. 418+06.71
 SW CORNER: STA. 417+95.80

NOTES:
 1. REFER TO STANDARD DRAWING 606001 FOR CONCRETE CURB AND GUTTER DETAILS.
 2. NORTHEAST CORNER SHOWN. SIMILAR FOR NORTHWEST, SOUTHEAST AND SOUTHWEST CORNERS.

CONCRETE SHOULDER CURB DETAIL

DATE	
BY	
PROFILE	
NO.	
NO.	
NO.	
NO.	



NOTES

1. HIGH WATER ELEVATION: 743.90

2. STREAM BED ELEVATION: 729.60

FILE NAME =	DESIGNED - JCP	REVISED -	 STATE OF ILLINOIS DEPARTMENT OF TRANSPORTATION	I-74 WESTBOUND ROADWAY PLAN AND PROFILE		F.A.I. R.T.	SECTION	COUNTY	TOTAL SHEETS	SHEET NO.
... \D4-174-HendersonCreek-Combined-sh013-WBp	DRAWN - JCP	REVISED -				74	48-(25)BR, BR-1J	KNOX	131	13
PLOT TIME = 2:22:00 PM	CHECKED - GAO	REVISED -				CONTRACT NO. 688B5				
PLOT DATE = 8/12/2014	DATE - 08/01/14	REVISED -				ILLINOIS FED. AID PROJECT				