

BILL OF MATERIAL

North Abutment

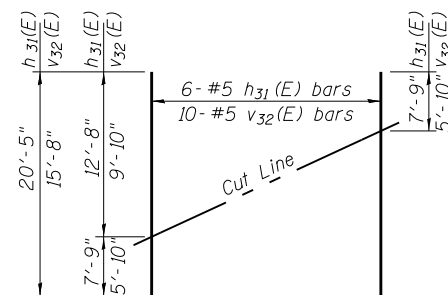
Bar	No.	Size	Length	Shape
h30(E)	52	#7	13' - 5"	—
h31(E)	12	#7	20' - 5"	—
h32(E)	4	#5	10' - 5"	—
p30(E)	10	#8	20' - 3"	—
p31(E)	10	#8	22' - 3"	—
s30(E)	46	#5	13' - 11"	□
s31(E)	12	#5	4' - 4"	└
* sp(E)	12	#4	2' - 0"	WWW
u30(E)	8	#6	11' - 0"	└
v31(E)	88	#8	6' - 0"	—
v32(E)	20	#5	15' - 8"	—
v33(E)	4	#5	10' - 3"	—
Structure Excavation	Cu. Yd.		402	
Concrete Structures	Cu. Yd.		28.8	
Reinforcement Bars, Epoxy Coated	Pound		5,760	
Furnishing Steel Piles HP12x84	Foot		410	
Driving Piles	Foot		410	
Test Pile Steel HP12x84	Each		1	
Geocomposite Wall Drain	Sq. Yd.		66	
Granular Backfill for Structures	Cu. Yd.		159.1	
Pipe Underdrain for Structures, 4" dia.	Foot		100	

BILL OF MATERIAL

South Abutment

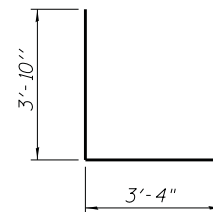
Bar	No.	Size	Length	Shape
h30(E)	52	#7	13' - 5"	—
h31(E)	12	#7	20' - 5"	—
h32(E)	4	#5	10' - 5"	—
p30(E)	10	#8	20' - 3"	—
p31(E)	10	#8	22' - 3"	—
s30(E)	46	#5	13' - 11"	□
s31(E)	12	#5	4' - 4"	└
* sp(E)	12	#4	2' - 0"	WWW
u30(E)	8	#6	11' - 0"	└
v31(E)	88	#8	6' - 0"	—
v32(E)	20	#5	15' - 8"	—
v33(E)	4	#5	10' - 3"	—
Structure Excavation	Cu. Yd.		402	
Concrete Structures	Cu. Yd.		28.8	
Reinforcement Bars, Epoxy Coated	Pound		5,760	
Furnishing Steel Piles HP12x84	Foot		355	
Driving Piles	Foot		355	
Test Pile Steel HP12x84	Each		1	
Geocomposite Wall Drain	Sq. Yd.		66	
Granular Backfill for Structures	Cu. Yd.		159.1	
Pipe Underdrain for Structures, 4" dia.	Foot		102	

* Length is height of spiral.

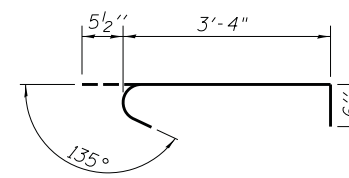


FIELD CUTTING DIAGRAM

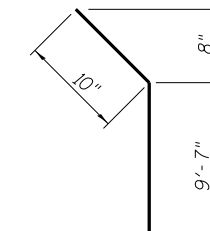
Order h31(E) and v32(E) full length. Cut as shown and use remainder of bars in opposite face.



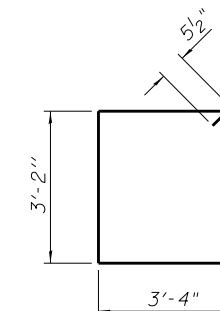
BAR u30(E)



BAR s31(E)



BAR h32(E)



BAR s30(E)

FILE NAME =	DESIGNED <i>EV</i>	REVISED -
...\\0480090-68084-021-Abutment.details.dgn	DRAWN <i>JCP</i>	REVISED -
PLOT TIME = 4:31:34 PM	CHECKED <i>PC</i>	REVISED -
PLOT DATE = 7/30/2014	DATE <i>05 03 2013</i>	REVISED -

SEPSTEIN
 800 WEST FULTON STREET
 CHICAGO, ILLINOIS 60611-1259
 TEL 312 454 9100
 FAX 312 559 1217
 WEB www.sepstein.com

**STATE OF ILLINOIS
 DEPARTMENT OF TRANSPORTATION**

**ABUTMENT DETAILS
 STRUCTURE NO. 048-0090**

SHEET NO. S21 OF S25 SHEETS

F.A.I. RTE.	SECTION	COUNTY	TOTAL SHEETS	SHEET NO.
74	48-[125B]BR, BR-1J	KNOX	131	42
			CONTRACT NO. 68B85	
ILLINOIS FED. AID PROJECT				