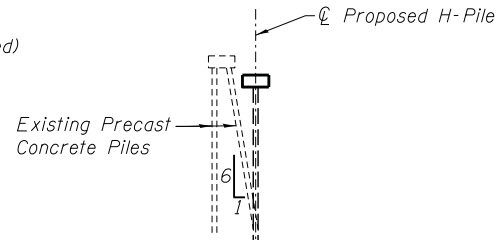
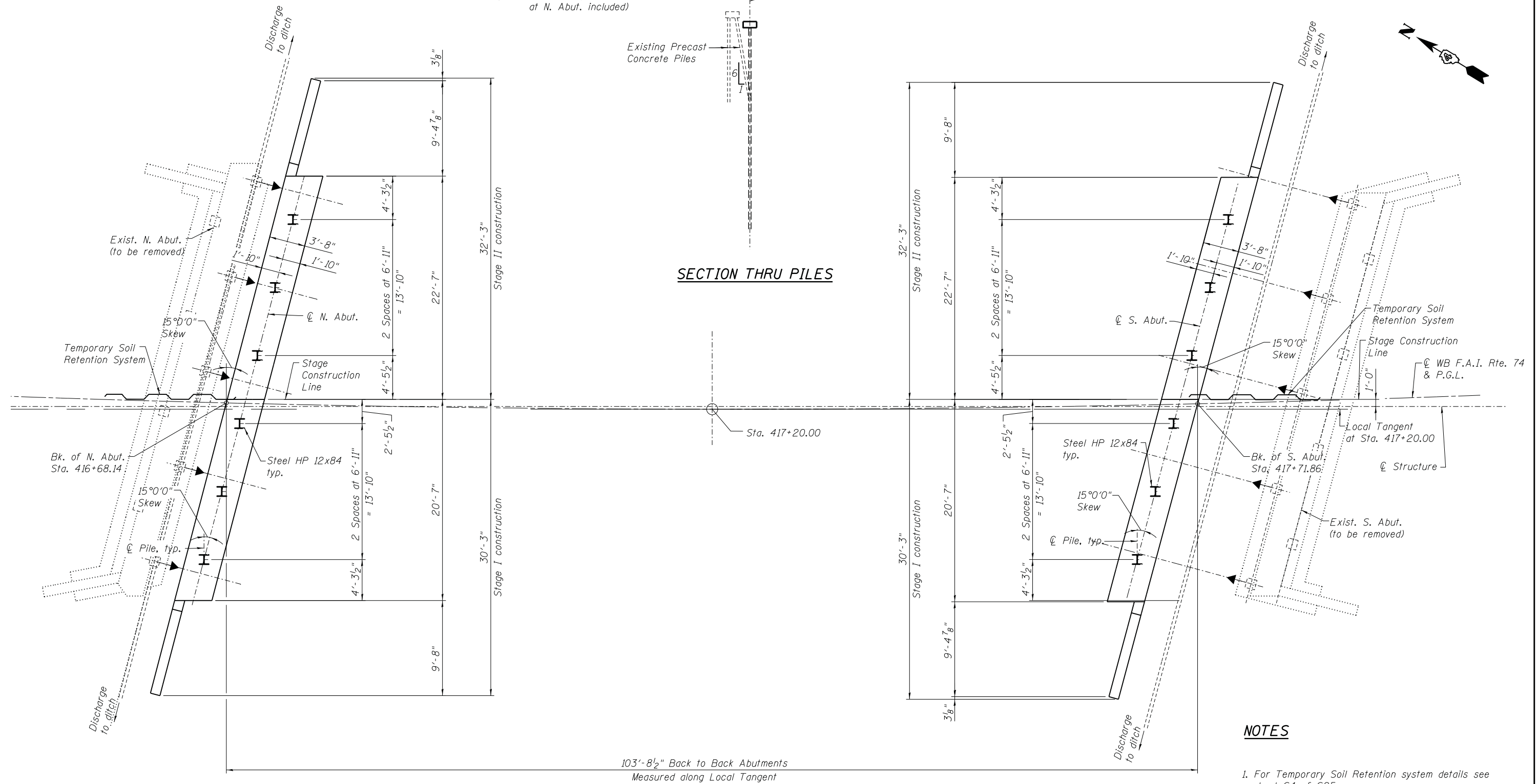


EXISTING PILE DATA

Type - Concrete Piles
 Capacity - 25 Ton Min.
 Est. Length - 35' Feet
 No. Req'd - 22 (1 test pile at N. Abut. included)



SECTION THRU PILES



103'-8 1/2" Back to Back Abutments
 Measured along Local Tangent

FOUNDATION PLAN

NOTES

1. For Temporary Soil Retention system details see sheet S4 of S25.
2. For Abutment details see sheet S20 of S25.
3. For Steel HP Piles details see sheet S22 of S25.
4. Drive one test pile at each abutment.

FILE NAME =	DESIGNED <i>EV</i>	REVISED -
...\\0480091-68084-003-Footing Plan.dgn	DRAWN <i>JCP</i>	REVISED -
PLOT TIME = 4:31:48 PM	CHECKED <i>PC</i>	REVISED -
PLOT DATE = 7/30/2014	DATE <i>05 03 2013</i>	REVISED -

SEPSTEIN
 800 WEST FULTON STREET
 CHICAGO, ILLINOIS 60611-1259
 TEL 312 454 9100
 FAX 312 559 1217
 WEB www.sepstein.com

**STATE OF ILLINOIS
 DEPARTMENT OF TRANSPORTATION**

**SUBSTRUCTURE LAYOUT
 STRUCTURE NO. 048-0091**

SHEET NO. S3 OF S25 SHEETS

F.A.I. RTE.	SECTION	COUNTY	TOTAL SHEETS	SHEET NO.
74	48-(25B)BR, BR-11	KNOX	131	49
CONTRACT NO. 68B85				
ILLINOIS FED. AID PROJECT				