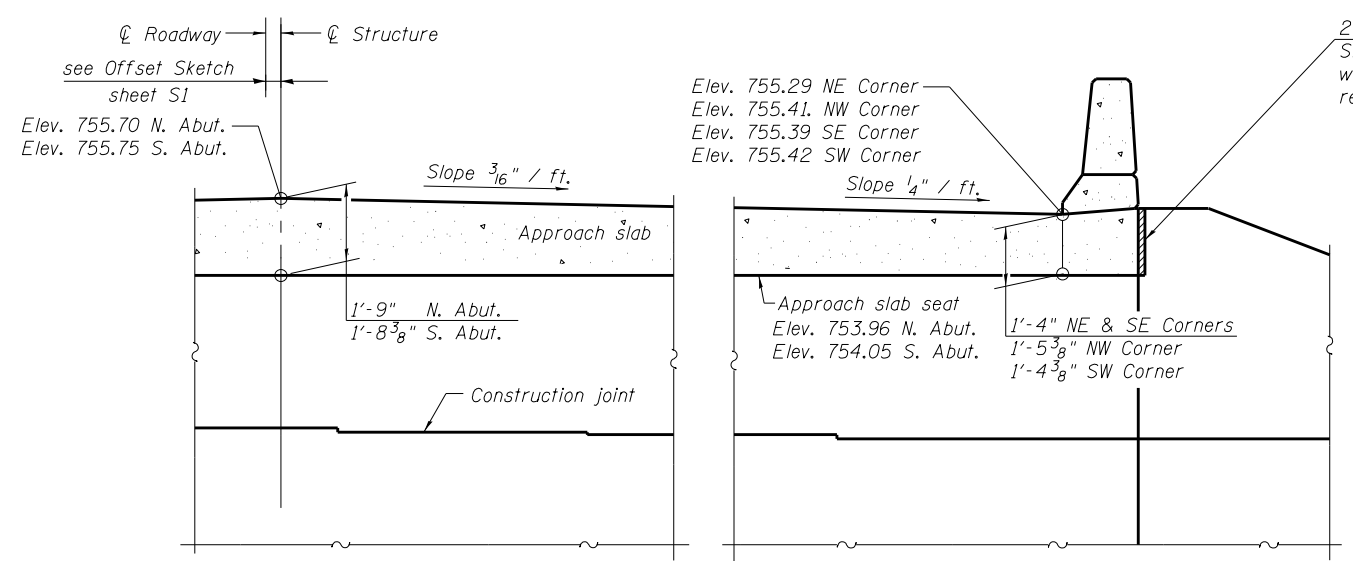
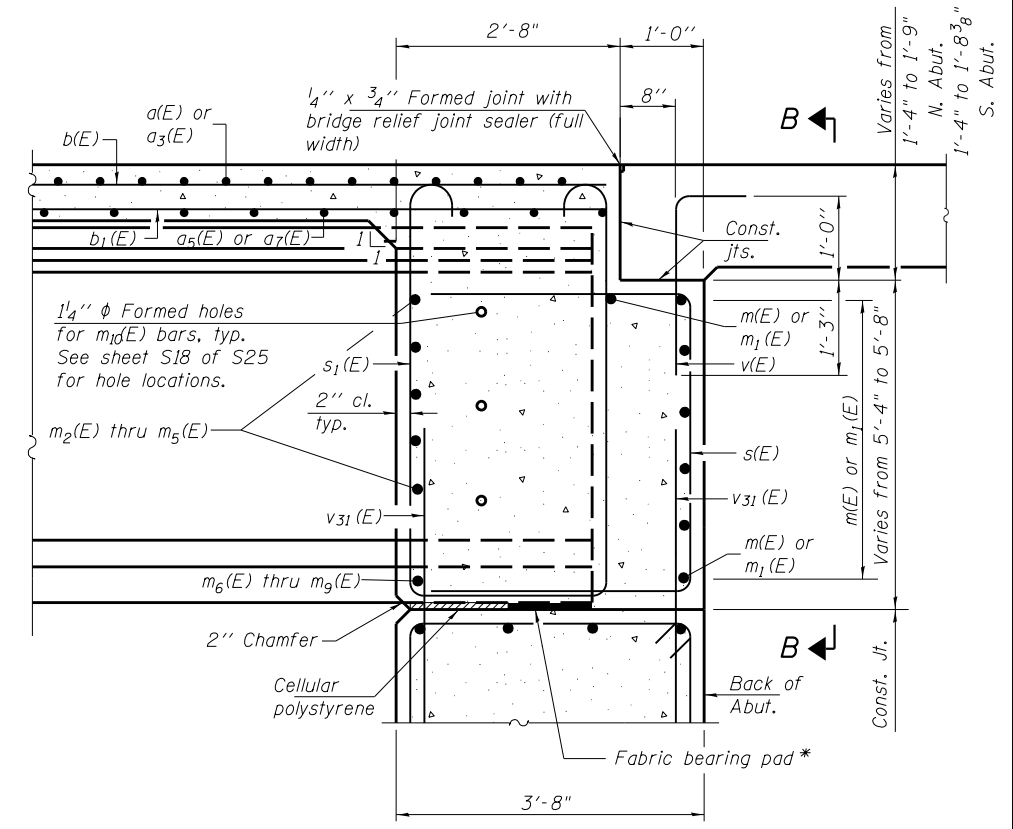


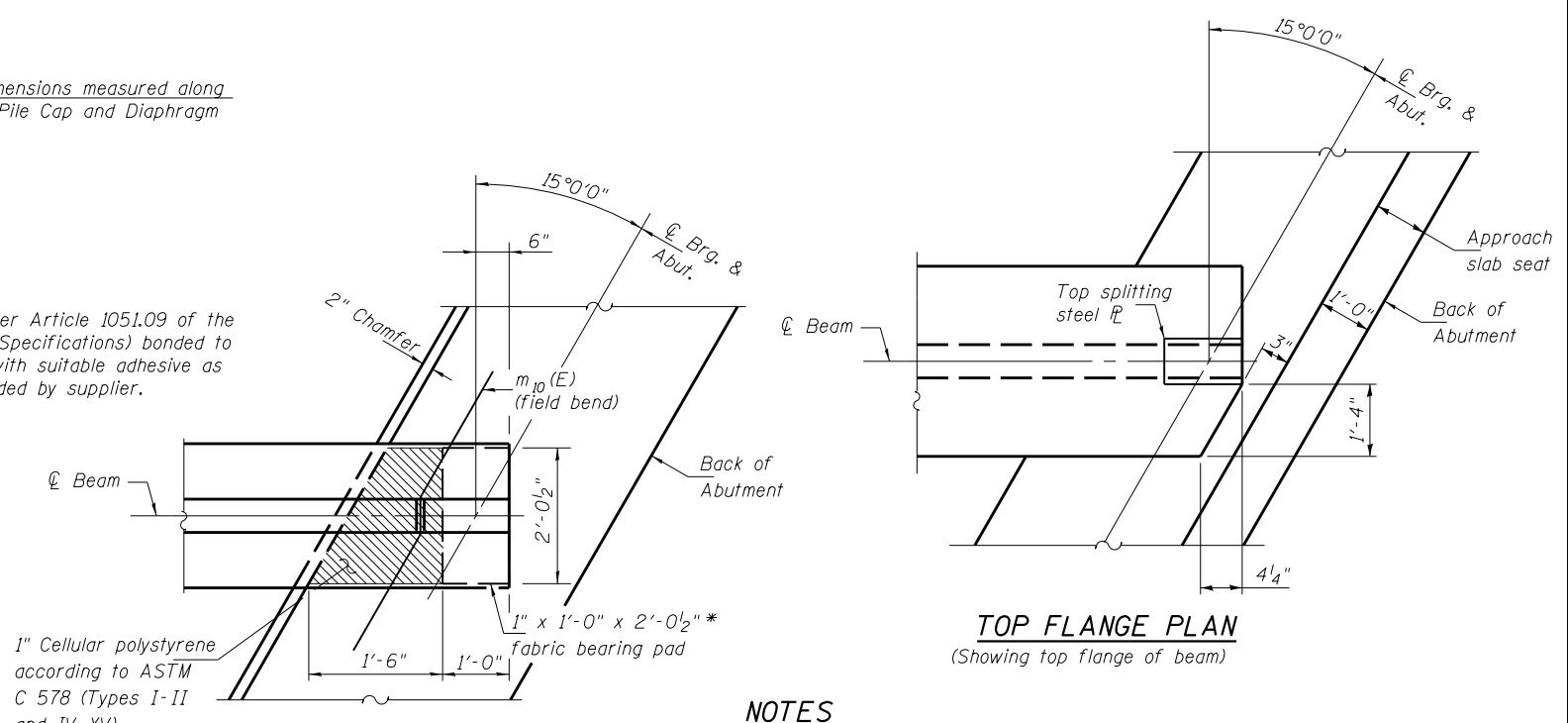
DIAPHRAGM ELEVATION AT ABUTMENT



SECTION B-B



SECTION A-A



PARTIAL PLAN AT ABUTMENT
(Showing bottom flange of beam)

TOP FLANGE PLAN
(Showing top flange of beam)

NOTES

1. Reinforcement bars in diaphragm are billed with superstructure on sheet S13 of S25.
2. Concrete in diaphragm is included with Concrete Superstructure on sheet S13 of S25.
3. For details of bars s(E), s1(E) and v(E) see sheet S13 of S25.
4. The approach slab seat shall have a constant slope determined from the control points shown.
5. Cost of cellular polystyrene is included with Concrete Superstructure.

*Cost of fabric bearing pad is included with Concrete Superstructure

FILE NAME = ... \0480091-68084-014-Diaphragm.dgn	DESIGNED EV	REVISED -	 800 WEST FULTON STREET CHICAGO, ILLINOIS 60611-1209 TEL. 312 454 9100 FAX 312 555 1217 WEB www.sepstein.com	STATE OF ILLINOIS DEPARTMENT OF TRANSPORTATION	DIAPHRAGM DETAILS STRUCTURE NO. 048-0091	F.A.I. RTE. 74	SECTION 48-(25)BR, BR-1J	COUNTY KNOX	TOTAL SHEETS 131	SHEET NO. 60
PLOT TIME = 9:32:31 AM	DRAWN JCP	REVISED -				CONTRACT NO. 68B85				
PLOT DATE = 10/1/2014	CHECKED PC	REVISED -				ILLINOIS FED. AID PROJECT				
	DATE 05 03 2013	REVISED -				SHEET NO. S14 OF S25 SHEETS				