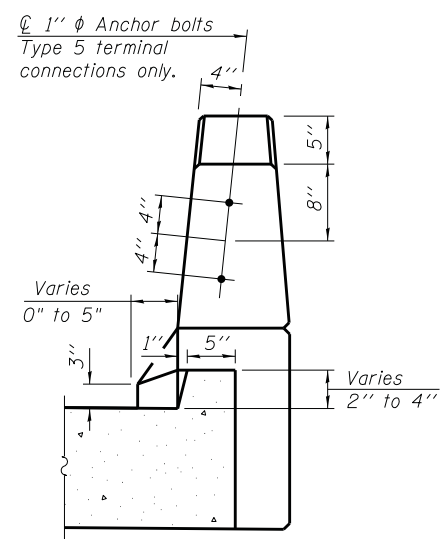
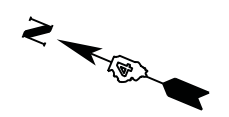


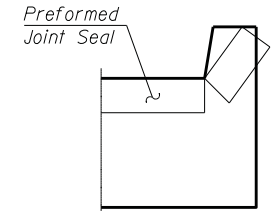
PLAN

South Approach slab is shown,
North Approach slab is similar

- * Tilt #9 b₂₁(E) bars as required to maintain clearance.
- ** Space between a₂₀(E) and a₂₁(E) bars, typ. ea. parapet.



VIEW B-B



VIEW F-F

Angle Preformed Joint Seal at 45°
at curbs when req'd for drainage.

NOTES

1. For Sections C-C & D-D, View E-E, bar bending diagrams and Bill of Materials see sheet S16 of S25.
2. For Bar Splicer (E) details see sheet S24 of S25.
3. a₂₀(E) thru a₂₃(E) bar spacings measured along \perp Rdwy.

BA-L

12-12-12

FILE NAME = ... \0480091-68084-015-ApprSlab.dgn	DESIGNED EV DRAWN JCP	REVISED - REVISED -	<p>800 WEST FULTON STREET CHICAGO, ILLINOIS 60611-1259</p> <p>TEL 312 454 9100 FAX 312 555 1217 WEB www.sepstein.com</p>	<p align="center">STATE OF ILLINOIS DEPARTMENT OF TRANSPORTATION</p>	<p align="center">BRIDGE APPROACH SLAB STRUCTURE NO. 048-0091</p>	F.A.I. RTE. 74	SECTION 48-[125B]BR, BR-1J	COUNTY KNOX	TOTAL SHEETS 131	SHEET NO. 61
PLOT TIME = 4:32:03 PM	CHECKED PC	REVISED -				CONTRACT NO. 68B85				
PLOT DATE = 7/30/2014	DATE 05 03 2013	REVISED -				SHEET NO. S15 OF S25 SHEETS				
						ILLINOIS FED. AID PROJECT				