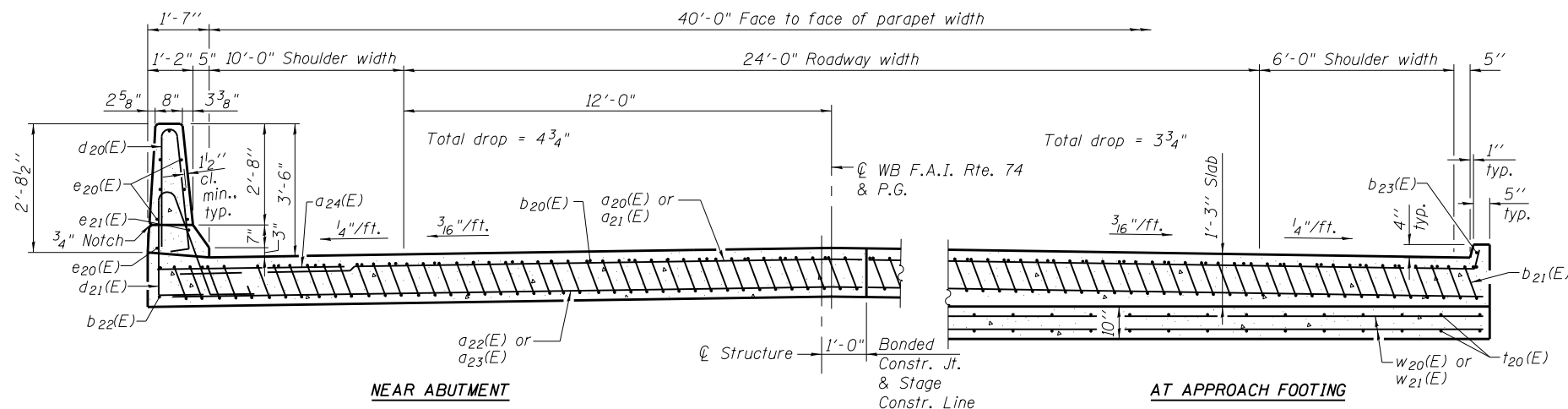
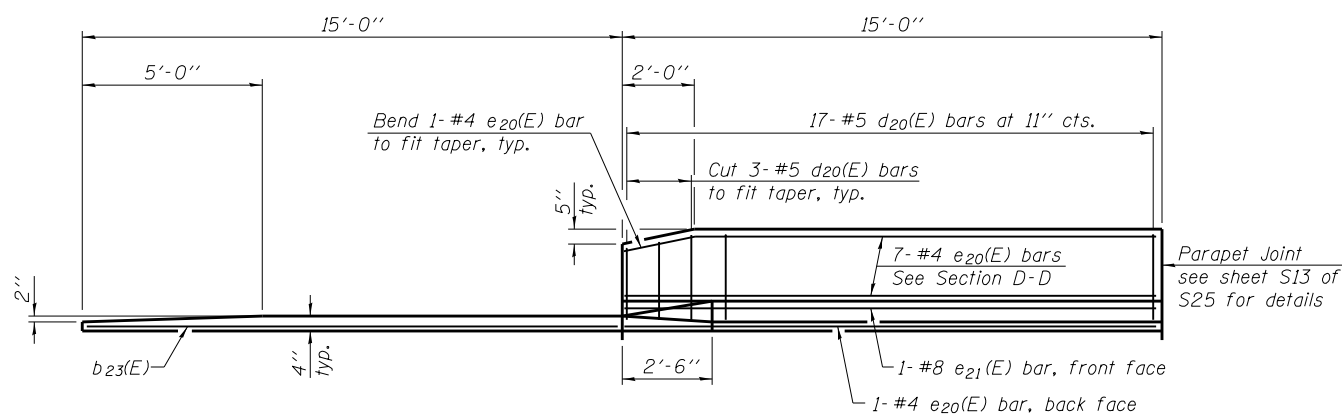


SECTION C-C

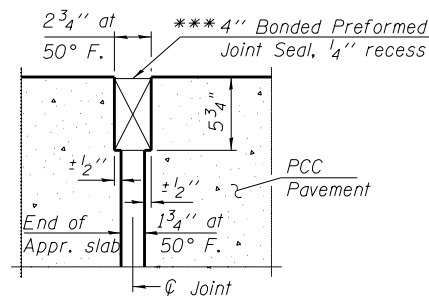


SECTION D-D

(See Plan for dimensions not shown)

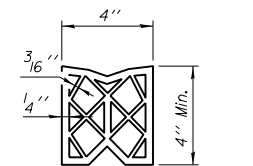


VIEW E-E

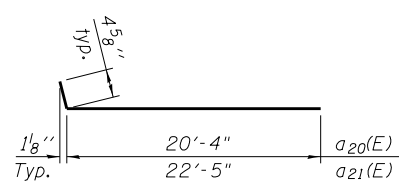


RIGID PAVEMENT

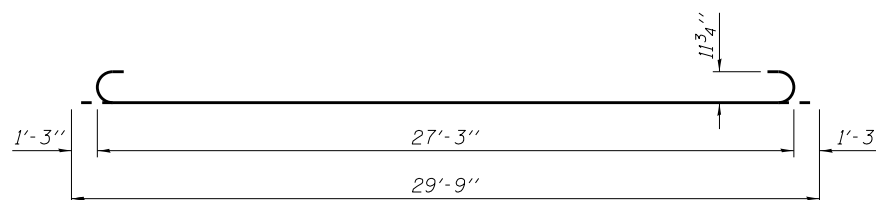
DETAIL A



BONDED PREFORMED JOINT SEAL



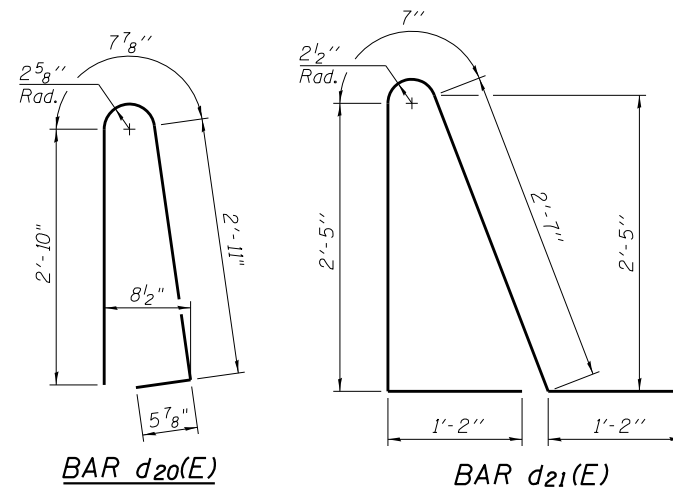
BARS a20(E) and a21(E)



BAR b21(E)

NOTES

1. Approach slab and parapet concrete shall be paid for as Concrete Superstructure.
2. Approach footing concrete shall be paid for as Concrete Structures.
3. Reinforcement shall be paid for as Reinforcement Bars, Epoxy Coated.
4. For v(E) bar details, see sheet S13 of S25.
5. The approach footing maximum applied service bearing pressure (Qmax) = 2.0 ksf.
6. For bar splicer details, see sheet S24 of S25.
7. Cost of excavation for approach footing included with Concrete Structures.
8. For Granular Backfill for Structures and drainage treatment details, see sheet S2 of S25.
9. For additional parapet details, see sheet S13 of S25.



BAR d20(E)

BAR d21(E)

* Tilt #9 b21(E) bars as required to maintain clearance.

*** Cost included with Concrete Superstructure.

**TWO APPROACH SLABS
BILL OF MATERIAL**

Bar	No.	Size	Length	Shape
a20(E)	50	#4	20' - 9"	—
a21(E)	50	#4	22' - 10"	—
a22(E)	92	#5	20' - 4"	—
a23(E)	92	#5	22' - 5"	—
a24(E)	48	#6	6' - 6"	—
b20(E)	70	#4	29' - 8"	—
b21(E)	202	#9	29' - 9"	—
b22(E)	4	#4	14' - 8"	—
b23(E)	4	#4	14' - 9"	—
d20(E)	68	#5	6' - 11"	—
d21(E)	68	#5	7' - 11"	—
e20(E)	32	#4	14' - 8"	—
e21(E)	4	#8	14' - 8"	—
t20(E)	176	#4	9' - 8"	—
w20(E)	80	#5	20' - 4"	—
w21(E)	80	#5	22' - 5"	—
Concrete Superstructure		Cu. Yd.	131.1	
Concrete Structures		Cu. Yd.	26.7	
Bridge Deck Grooving		Sq. Yd.	269	
Protective Coat		Sq. Yd.	304	
Reinforcement Bars, Epoxy Coated		Pound	34,160	