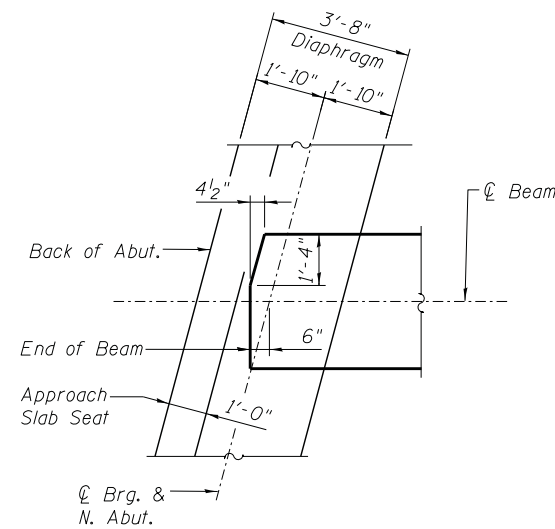


**PLAN**



**DETAIL 1**  
Clip Top Flange only

INTERIOR BEAM MOMENT TABLE		
0.5 Sp. 1		
I	(in <sup>4</sup> )	545894
I'	(in <sup>4</sup> )	1042047
S <sub>b</sub>	(in <sup>3</sup> )	14915
S <sub>b</sub> '	(in <sup>3</sup> )	19851
S <sub>t</sub>	(in <sup>3</sup> )	15421
S <sub>t</sub> '	(in <sup>3</sup> )	53421
DC1	(k/')	1.526
M <sub>DC1</sub>	(k)	1905.2
DC2	(k/')	0.173
M <sub>DC2</sub>	(k)	216.4
DW	(k/')	0.333
M <sub>DW</sub>	(k)	416.2
M <sub>L + IM</sub>	(k)	1,782

INTERIOR BEAM REACTION TABLE		
Abut.		
R <sub>DC1</sub>	(k)	76.3**
R <sub>DC2</sub>	(k)	8.7
R <sub>DW</sub>	(k)	16.7
R <sub>L + IM</sub>	(k)	87.6
R <sub>Total</sub>	(k)	189.3

\*\* End Diaphragm Load is excluded

I: Non-composite moment of inertia of beam section (in.<sup>4</sup>).  
 I': Composite moment of inertia of beam section (in.<sup>4</sup>).  
 S<sub>b</sub>: Non-composite section modulus for the bottom fiber of the prestressed beam (in.<sup>3</sup>).  
 S<sub>b</sub>': Composite section modulus for the bottom fiber of the prestressed beam (in.<sup>3</sup>).  
 S<sub>t</sub>: Non-composite section modulus for the top fiber of the prestressed beam (in.<sup>3</sup>).  
 S<sub>t</sub>': Composite section modulus for the top fiber of the prestressed beam (in.<sup>3</sup>).  
 DC1: Un-factored non-composite dead load (kips/ft.).  
 M<sub>DC1</sub>: Un-factored moment due to non-composite dead load (kip-ft.).  
 DC2: Un-factored long-term composite (superimposed excluding future wearing surface) dead load (kips/ft.).  
 M<sub>DC2</sub>: Un-factored moment due to long-term composite (superimposed excluding future wearing surface) dead load (kip-ft.).  
 DW: Un-factored long-term composite (superimposed future wearing surface only) dead load (kips/ft.).  
 M<sub>DW</sub>: Un-factored moment due to long-term composite (superimposed future wearing surface only) dead load (kip-ft.).  
 M<sub>L + IM</sub>: Un-factored live load moment plus dynamic load allowance (impact) (kip-ft.).