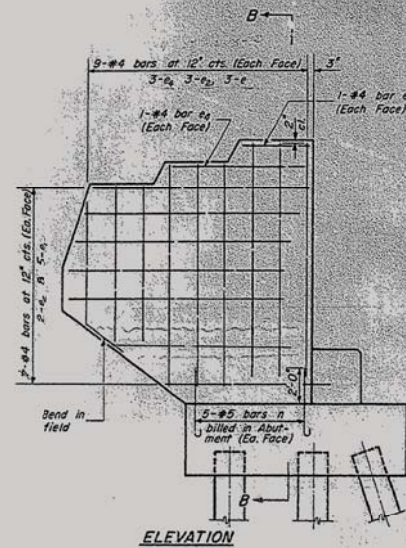
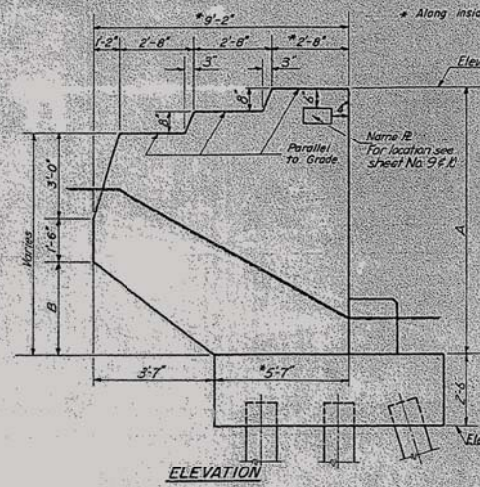


STATE OF ILLINOIS  
DEPARTMENT OF PUBLIC WORKS & BUILDINGS  
DIVISION OF HIGHWAYS

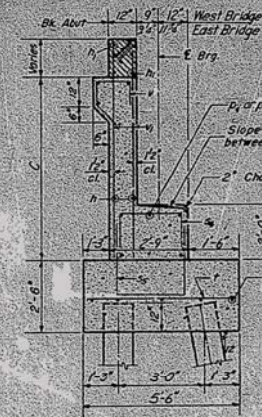
PROJECT NO.	SECTION	SHEET NO.	TOTAL SHEETS
FAI 74-48-25B	KNOX	20	47



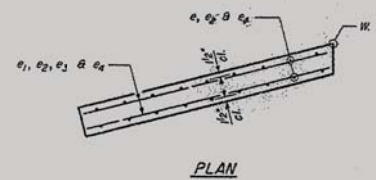
ELEVATION



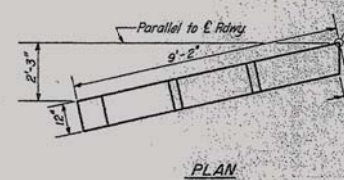
ELEVATION



SECTION A-A



PLAN



PLAN

TABLE OF DIMENSIONS

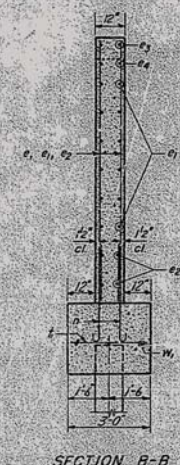
	EAST BRIDGE		WEST BRIDGE	
	N. ABUT.	S. ABUT.	N. E. S. ABUT.	W. ABUT.
E. Side	7'-4"	7'-4"	7'-6"	7'-5"
W. Side	7'-4"	7'-4"	7'-6"	7'-5"
A	1'-6"	1'-6"	1'-6"	1'-6"
B	2'-0"	2'-0"	2'-0"	2'-0"
C	2'-0"	2'-0"	2'-0"	2'-0"

ONE END POST  
BILL OF MATERIAL

Bar	No.	Size	Length	Slope
e	6	#4	7'-5"	
e1	10	#4	7'-9"	
e2	10	#4	6'-6"	
e3	2	#4	2'-6"	
e4	8	#4	5'-0"	

Class X Concrete Cu. Yds. 2.2  
Reinforcement Bars Lbs. 154

End Post Quantities included in Abutment Bill of Material



SECTION B-B

DETAIL OF ABUTMENTS & END POSTS  
FAI RT. 74-SEC. 48-25B  
KNOX COUNTY  
STA. EAST BRIDGE 416+20  
WEST BRIDGE 416+04

DESIGNED: *Abraham P. Bick*  
CHECKED: *W. A. Soudan*  
DRAWN: *W. A. Soudan*  
AW-2 Drawn 2-2-60

FOR INFORMATION ONLY

FILE NAME = ... \D4-174-HendersonCreek-EB-shAPP16-D4.dgn	DESIGNED - TLM	REVISED -	<p>STATE OF ILLINOIS DEPARTMENT OF TRANSPORTATION</p>	EXISTING PLANS			F.A.I. RTE. 74	SECTION 48-(25B)BR, BR-1J	COUNTY KNOX	TOTAL SHEETS 131	SHEET NO. 127
PLOT TIME = 4:43:28 PM	DRAWN - TLM	REVISED -		SCALE: N.T.S.	SHEET NO.	OF SHEETS	STA.	TO STA.	CONTRACT NO. 68B85		
PLOT DATE = 7/30/2014	CHECKED - GAO	REVISED -		ILLINOIS FED. AID PROJECT							