

F.A.P. RTE.	SECTION	COUNTY	TOTAL SHEETS	SHEET NO.
669	D4 BUILDING DEMO 2015	PEORIA	6	1
		ILLINOIS	CONTRACT NO. 68C26	

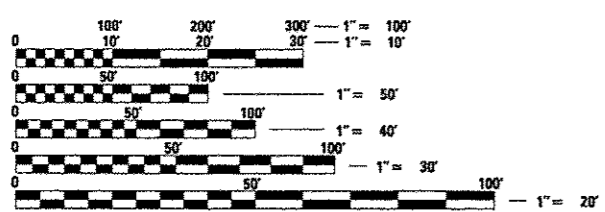
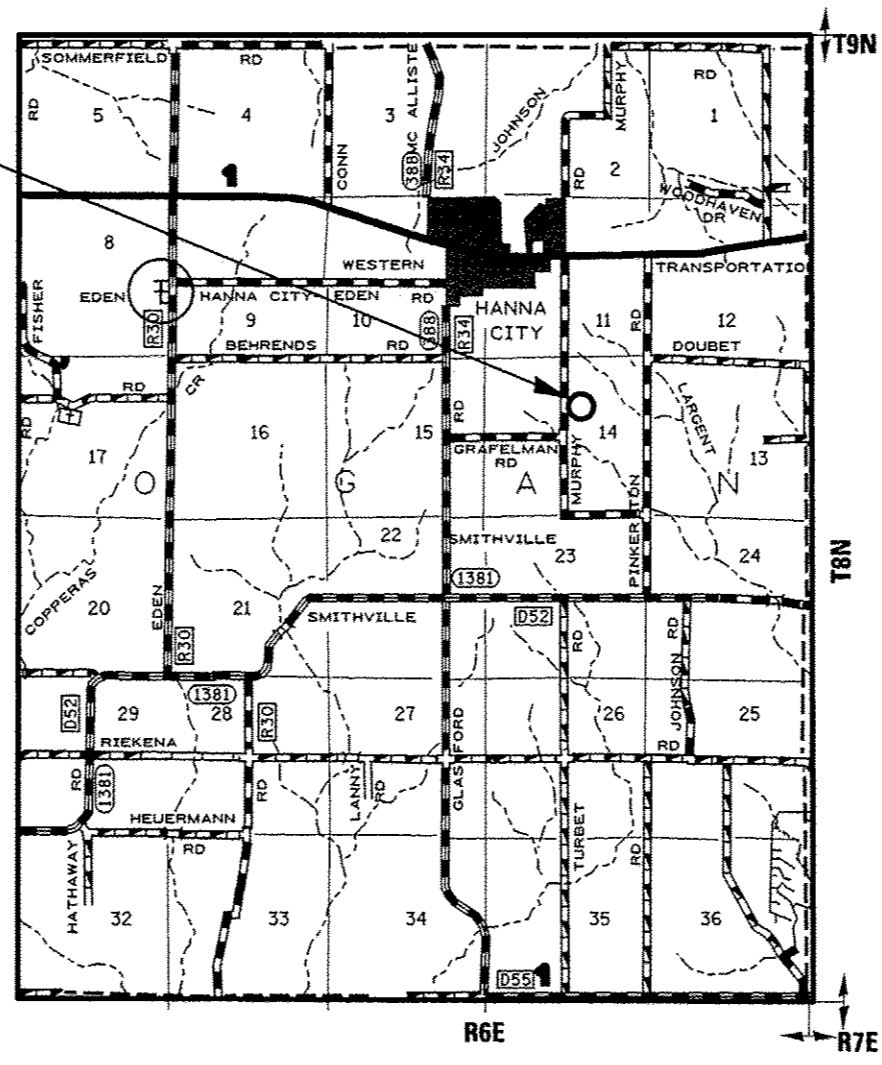
**STATE OF ILLINOIS**  
**DEPARTMENT OF TRANSPORTATION**  
**DIVISION OF HIGHWAYS**  
**FAP 669 (IL 116)**  
**SECTION D4 BUILDING DEMO 2015**  
**PEORIA COUNTY**  
**C-94-009-15**

- INDEX OF SHEETS**
1. COVER SHEET
  2. GENERAL NOTES
  3. SUMMARY OF QUANTITIES
  4. SCHEDULE OF QUANTITIES
  5. PLAN SHEET
  6. RIGHT OF WAY PLAT

- STANDARDS**
- 701001-02
  - 701301-04
  - 701901-03

- DESIGN DESIGNATION**
- ADT = 100
  - SU = 0.0%
  - MU = 0.0%

516 S. MURPHY RD.  
HANNA CITY



FULL SIZE PLANS HAVE BEEN PREPARED USING STANDARD ENGINEERING SCALES. REDUCED SIZED PLANS WILL NOT CONFORM TO STANDARD SCALES. IN MAKING MEASUREMENTS ON REDUCED PLANS, THE ABOVE SCALES MAY BE USED.

J.U.L.I.E.  
JOINT UTILITY LOCATION INFORMATION FOR EXCAVATION  
1-800-892-0123  
OR 811

PROJECT ENGINEER: LEONEL CRESPO

CONTRACT NO. 68C26

GROSS LENGTH = 494.44 FT. = 0.094 MILE  
NET LENGTH = 494.44 FT. = 0.094 MILE

**D-94-007-15**



**DESCRIPTION OF WORK**  
THIS PROJECT INVOLVES THE DEMOLITION OF A HOUSE LOCATED AT 516 S. MURPHY ROAD IN HANNA CITY.

STATE OF ILLINOIS  
DEPARTMENT OF TRANSPORTATION  
DIVISION OF HIGHWAYS

SUBMITTED Aug 21 2014  
*Renee A. Gorman*  
DEPUTY DIRECTOR OF HIGHWAYS, REGION ENGINEER

Oct 17 2014  
*John D. Barone* PE/PR  
acting ENGINEER OF DESIGN AND ENVIRONMENT

Oct 17 2014  
*Omer Osman* PE/PR  
DIRECTOR OF HIGHWAYS, CHIEF ENGINEER

**PRINTED BY THE AUTHORITY  
OF THE STATE OF ILLINOIS**