

FOR INDEX OF SHEETS, SEE SHEET NO. 1

1. COVER/SIGNATURE SHEET
- 2-4 GENERAL/SPECIFIC NOTES
5. SUMMARY OF QUANTITIES
6. LINE DIAGRAM/JOB LOCATION
7. SCHEDULE OF QUANTITIES
8. BUILDING REMOVAL PLAN SHEET
9. R.O.W. PLAN SHEET

**HIGHWAY STANDARDS**

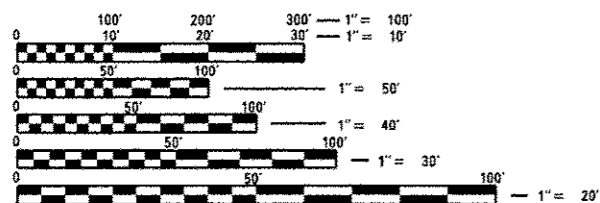
701001-02  
701301-04  
701901-03

**CADD STANDARDS**

N/A

ADT 7150/2013

MU 275  
SU 375



FULL SIZE PLANS HAVE BEEN PREPARED USING STANDARD ENGINEERING SCALES. REDUCED SIZED PLANS WILL NOT CONFORM TO STANDARD SCALES. IN MAKING MEASUREMENTS ON REDUCED PLANS, THE ABOVE SCALES MAY BE USED.

J.U.L.I.E.  
JOINT UTILITY LOCATION INFORMATION FOR EXCAVATION  
1-800-892-0123  
OR 811

PROJECT ENGINEER: Christopher Maushard, 309-671-3453

PROJECT MANAGER: George Elias, 309-671-3467

CATALOG NO. 035194-00D  
CONTRACT NO. 68C27

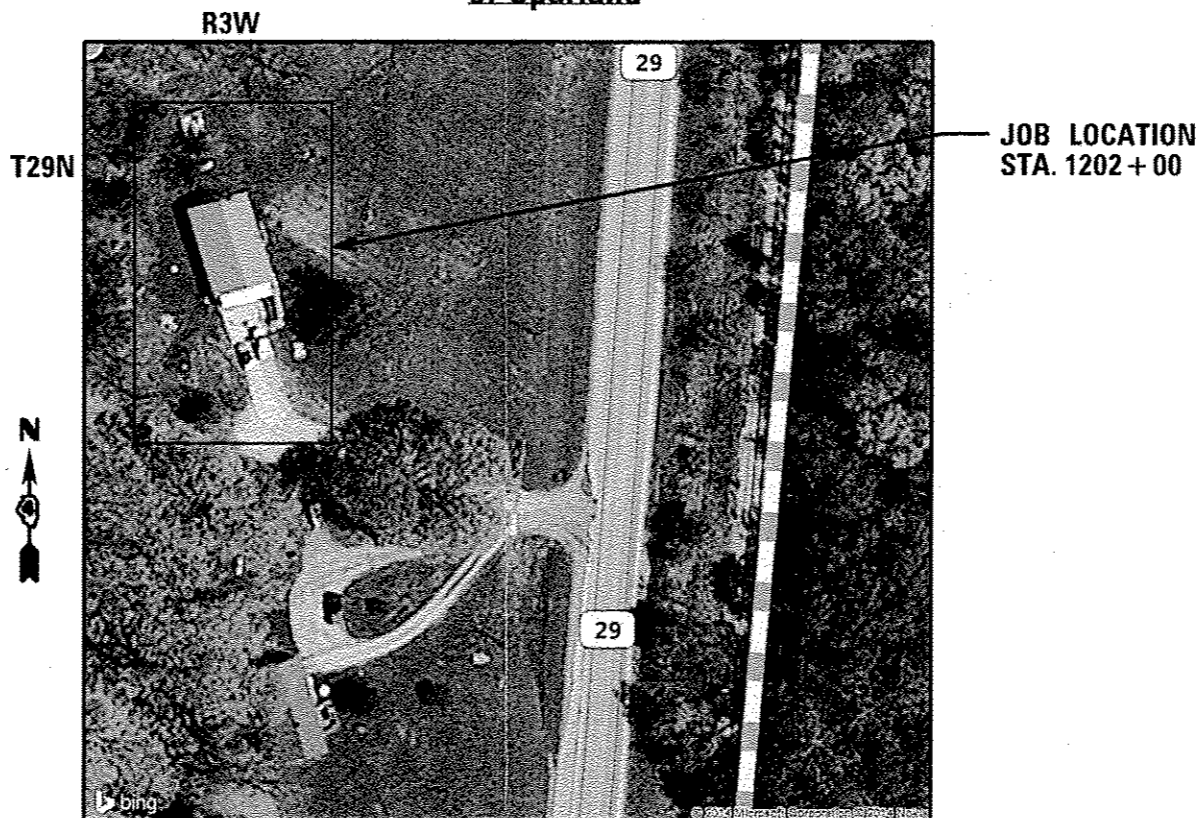
**STATE OF ILLINOIS**  
**DEPARTMENT OF TRANSPORTATION**  
**DIVISION OF HIGHWAYS**  
**PROPOSED**  
**HIGHWAY PLANS**

**IL 29 ROUTE FAP 318**  
**SECTION D4 BUILDING DEMOLITION 2015-1**

**TYPE of IMPROVEMENT: BUILDING DEMOLITION**  
**MARSHALL COUNTY**  
C-94-010-15

**JOB DESCRIPTION:**

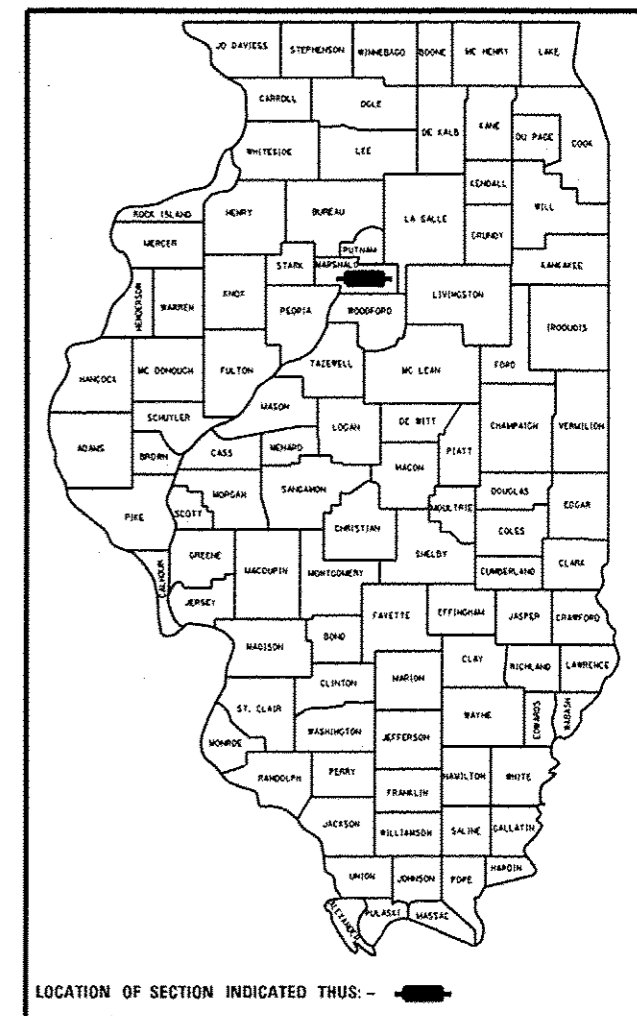
Building Removal No. 1 located  
at 663 State Route 29, South  
of Sparland



GROSS LENGTH = NET LENGTH = STA. 1202 + 00

F.A.P. NO.	SECTION	COUNTY	TOTAL SHEETS	SHEET NO.
318	IL 29 D4 BLD. DEMOLITION 2015-1	MARSHALL	9	1
ILLINOIS			CONTRACT NO. 68C27	

D-94-008-15



LOCATION OF SECTION INDICATED THUS: - [thick black line]

STATE OF ILLINOIS  
DEPARTMENT OF TRANSPORTATION  
DIVISION OF HIGHWAYS

SUBMITTED August 19 20 14  
[Signature]  
DEPUTY DIRECTOR OF HIGHWAYS, REGION ENGINEER

Oct 17 20 14  
[Signature]  
ENGINEER OF DESIGN AND ENVIRONMENT

Oct 17 20 14  
[Signature]  
DIRECTOR OF HIGHWAYS, CHIEF ENGINEER

**PRINTED BY THE AUTHORITY**  
**OF THE STATE OF ILLINOIS**