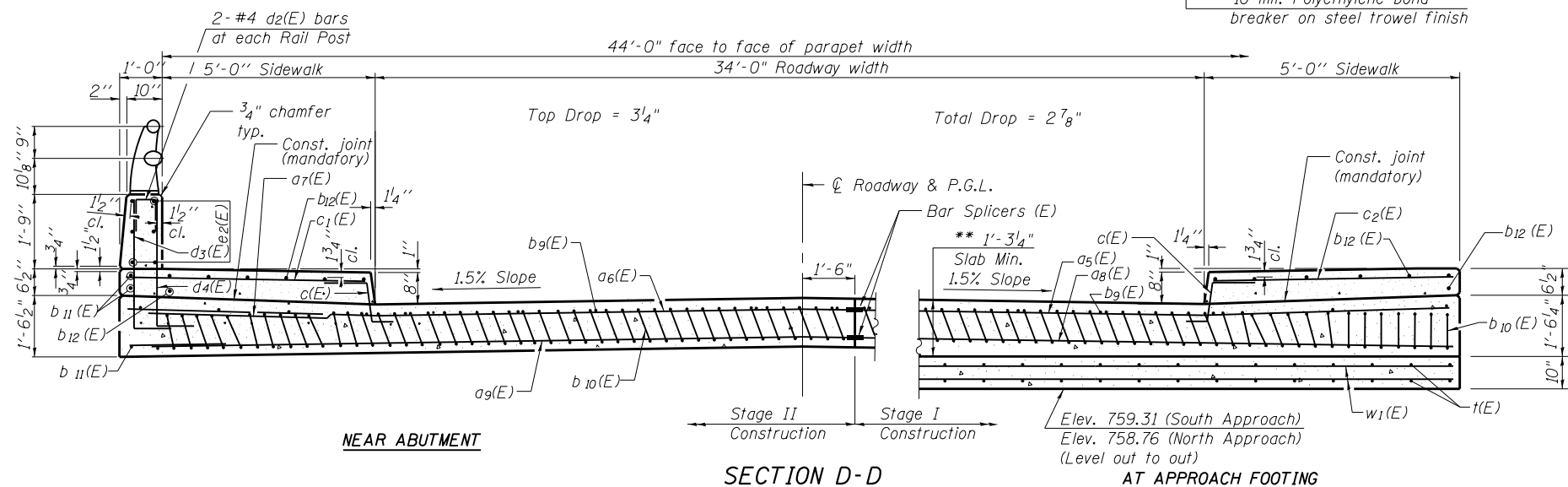


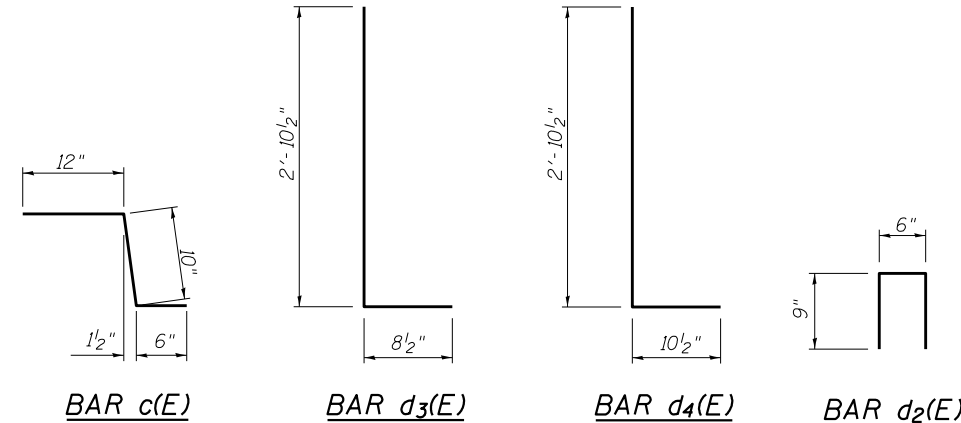
SECTION C-C

Notes:  
 Approach slab and parapet concrete shall be paid for as Concrete Superstructure.  
 Approach footing concrete shall be paid for as Concrete Structures.  
 Reinforcement shall be paid for as Reinforcement Bars, Epoxy Coated.  
 The approach footing maximum applied service bearing pressure (Qmax) = 2.0 ksf.  
 For bar splicer details, see sheet 21 of 23.  
 Cost of excavation for approach footing included with Concrete Structures.  
 For Granular Backfill for Structures and drainage treatment details, see sheet 2 of 23.



SECTION D-D

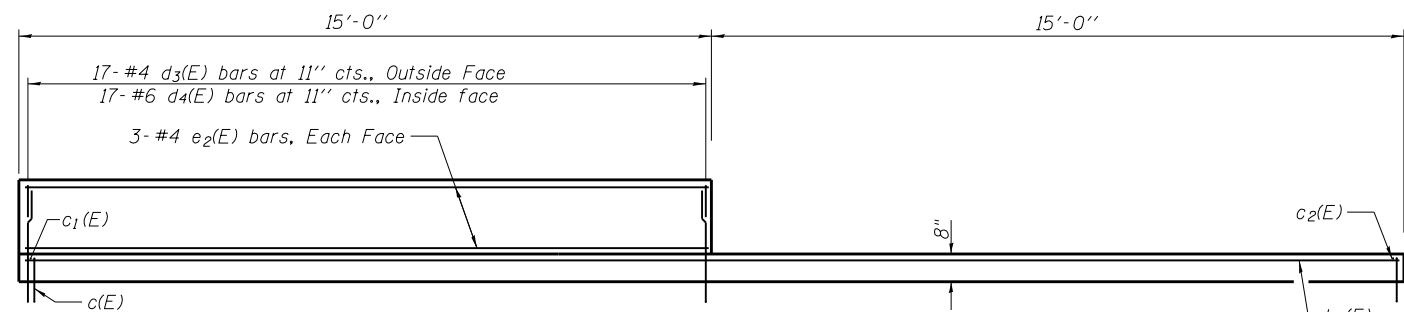
(See Plan for dimensions not shown)



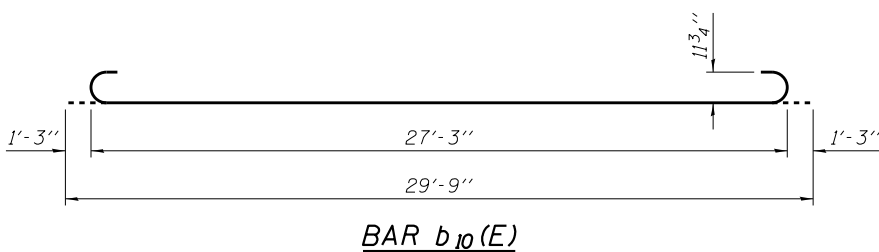
\* Tilt #9 b1(E) bars as required to maintain clearance.  
 \*\* Prior to Diamond Grinding of Bridge Section.  
 \*\*\* Cost included with Concrete Superstructure.

TWO APPROACHES  
 BILL OF MATERIAL

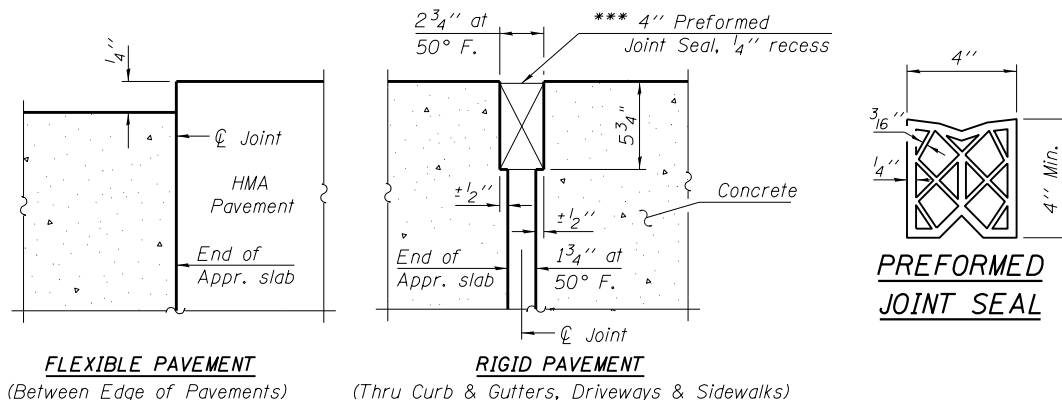
Bar	No.	Size	Length	Shape
a5(E)	50	#4	19'-5"	—
a6(E)	50	#4	24'-6"	—
a7(E)	48	#6	6'-6"	—
a8(E)	92	#5	19'-5"	—
a9(E)	92	#5	24'-6"	—
b9(E)	72	#4	29'-8"	—
b10(E)	208	#9	29'-9"	—
b11(E)	12	#5	14'-8"	—
b12(E)	28	#5	29'-8"	—
c(E)	128	#5	2'-4"	—
c1(E)	64	#5	5'-6"	—
c2(E)	64	#5	4'-6"	—
d2(E)	8	#4	2'-0"	—
d3(E)	68	#4	3'-7"	—
d4(E)	68	#6	3'-9"	—
e2(E)	24	#4	14'-8"	—
t(E)	90	#4	9'-8"	—
w(E)	80	#5	19'-5"	—
w1(E)	80	#5	24'-6"	—
Concrete Superstructure			Cu. Yd.	148.9
Concrete Structures			Cu. Yd.	27.9
Reinforcement Bars, Epoxy Coated			Pound	35,680



VIEW E-E



BAR b10(E)



DETAIL A

Note:  
 A flexible connector is proposed with Curb & Gutter, so the "J" Joint at end of slab "Detail A" will be a combination of each detail in "Detail A".

(Sheet 3 of 3)



USER NAME = FE1	DESIGNED - VPT	REVISED —
	CHECKED - THW	REVISED —
PLOT SCALE = 0.1667 ft / in.	DRAWN - THW	REVISED —
PLOT DATE = 9/30/2014 2:07:02 PM	CHECKED - VPT	REVISED —

STATE OF ILLINOIS  
 DEPARTMENT OF TRANSPORTATION

BRIDGE APPROACH SLAB DETAILS  
 STRUCTURE NO. 057-0256

SHEET NO. 15 OF 23 SHEETS

F.A.P. RTE.	SECTION	COUNTY	TOTAL SHEETS	SHEET NO.
730	62-ZBR	MCLEAN	65	42
CONTRACT NO. 70540				
ILLINOIS FED. AID PROJECT				