

STATE OF ILLINOIS  
DEPARTMENT OF TRANSPORTATION  
DIVISION OF HIGHWAYS

PROPOSED  
HIGHWAY PLANS

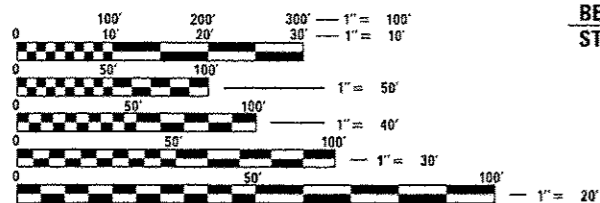
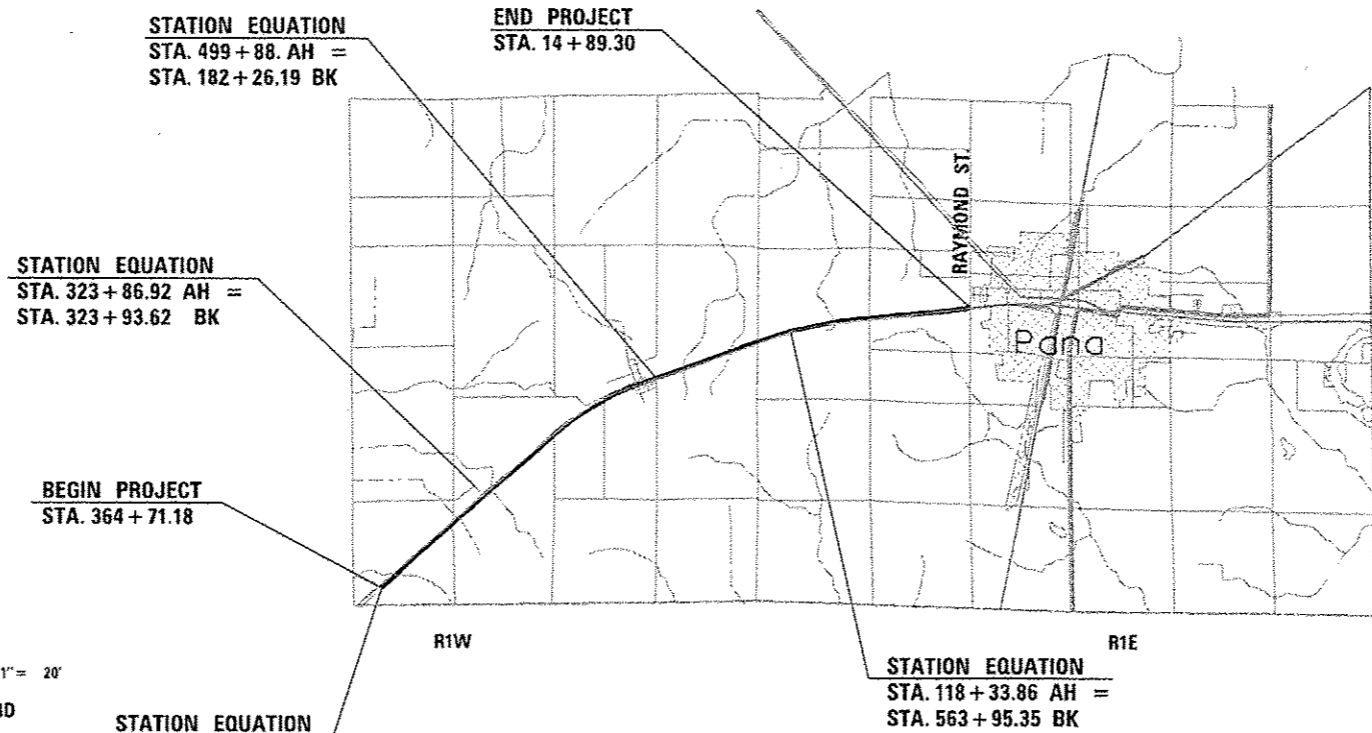
FAP ROUTE 325 (1L 16)  
SECTION ((15)RS-5, (16)RS-4) I-1  
PROJECT ACNHPP-ACHSIP-0325 (061)  
RESURFACING  
CHRISTIAN COUNTY

C-96-024-11

FOR INDEX OF SHEETS, SEE SHEET NO. 2

HIGHWAY STANDARDS

000001-06	701006-05
001006	701301-04
630001-10	701306-03
630101-09	701311-03
635006-03	701326-04
635011-02	701901-03
642006	780001-04
701001-02	781001-03



FULL SIZE PLANS HAVE BEEN PREPARED USING STANDARD ENGINEERING SCALES. REDUCED SIZED PLANS WILL NOT CONFORM TO STANDARD SCALES. IN MAKING MEASUREMENTS ON REDUCED PLANS, THE ABOVE SCALES MAY BE USED.

J.U.L.I.E.  
JOINT UTILITY LOCATION INFORMATION FOR EXCAVATION  
1-800-892-0123  
OR 811

PROJECT ENGINEER - KEITH DONOVAN (217)782-4761  
TEAM ENGINEER - ED KERN (217)524-7547

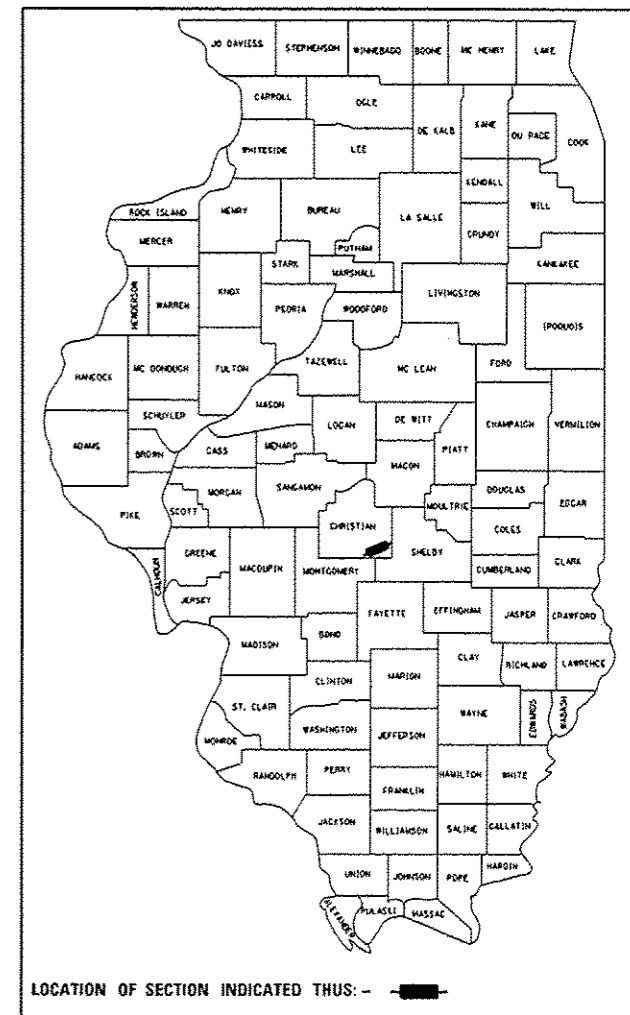
GROSS LENGTH = 34,959.5 FT. = 6.62 MILE  
NET LENGTH = 34,959.5 FT. = 6.62 MILE

CONTRACT NO. 72E04

F.A.P. RTE.	SECTION	COUNTY	TOTAL SHEETS	SHEET NO.
325		CHRISTIAN	28	1
		ILLINOIS	CONTRACT NO. 72E04	

\* ((15)RS-5, (16)RS-4) I-1

D-96-024-11



CHRISTIAN COUNTY: IL-16  
ADT = 2,050 (2013)  
PV = 1,890 (92.2%)  
SU = 90 (4.4%)  
MU = 70 (3.4%)

STATE OF ILLINOIS  
DEPARTMENT OF TRANSPORTATION  
DIVISION OF HIGHWAYS

SUBMITTED August 13, 2014  
[Signature]  
DEPUTY DIRECTOR OF HIGHWAYS, REGION ENGINEER

Oct 17, 2014  
John D. Baranzelli, P.E.  
ENGINEER OF DESIGN AND ENVIRONMENT

Oct 17, 2014  
Omer Osman, P.E.  
DIRECTOR OF HIGHWAYS, CHIEF ENGINEER

PRINTED BY THE AUTHORITY  
OF THE STATE OF ILLINOIS