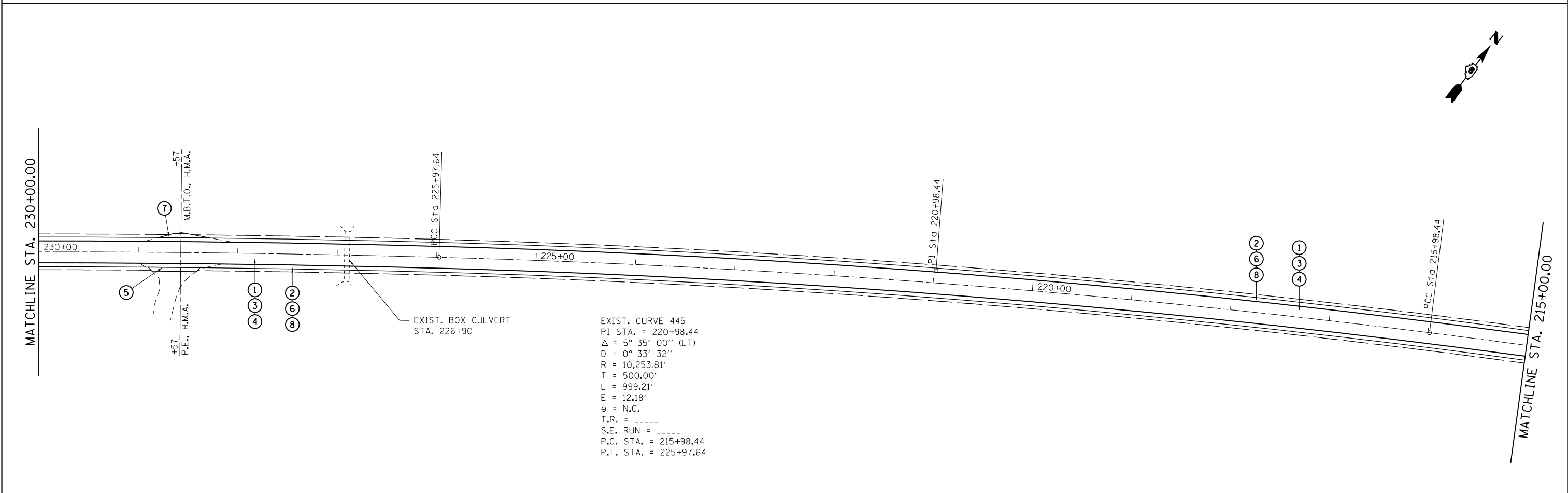


- LEGEND**
- ① PROPOSED HOT-MIX ASPHALT SURFACE REMOVAL - 1 1/2"
 - ② PROPOSED EXCAVATING AND GRADING EXISTING SHOULDER
 - ③ PROPOSED LEVELING BINDER (MACHINE METHOD) - 2 1/4"
 - ④ PROPOSED HOT-MIX ASPHALT SURFACE COURSE, IL 9.5 N50 - 1 1/2"
 - ⑤ PROPOSED INCIDENTAL HMA SURFACING
 - ⑥ PROPOSED HOT-MIX ASPHALT SHOULDER (8" THICK - 4' WIDTH)
 - ⑦ PROPOSED MAILBOX TURN TURNOUT
 - ⑧ PROPOSED AGGREGATE WEDGE SHOULDER, TYPE B

EXIST. CURVE 444
 PI STA. = 232+49.74
 Δ = 5° 03' 00" (LT)
 D = 0° 23' 15"
 R = 14,787.48'
 T = 652.10'
 L = 1,303.36'
 E = 14.37'
 e = N.C.
 T.R. = -----
 S.E. RUN = -----
 P.C. STA. = 225+97.64
 P.T. STA. = 239+01.00



EXIST. CURVE 445
 PI STA. = 220+98.44
 Δ = 5° 35' 00" (LT)
 D = 0° 33' 32"
 R = 10,253.81'
 T = 500.00'
 L = 999.21'
 E = 12.18'
 e = N.C.
 T.R. = -----
 S.E. RUN = -----
 P.C. STA. = 215+98.44
 P.T. STA. = 225+97.64

FILE NAME =	USER NAME = pricesa	DESIGNED -	REVISED -
ci:\pwwork\pwwork\pricesa\d0239884\0672604-sht-50pin.dgn		DRAWN -	REVISED -
	PLOT SCALE = 100.0000' / in.	CHECKED -	REVISED -
	PLOT DATE = Aug-14-2014 03:08:36PM	DATE -	REVISED -

**STATE OF ILLINOIS
 DEPARTMENT OF TRANSPORTATION**

IL 16 PLAN SHEETS			
SCALE:	SHEET	OF	SHEETS
	STA.	TO	STA.

F.A.P. RTE.	SECTION	COUNTY	TOTAL SHEETS	SHEET NO.
		CHRISTIAN	28	16
ILLINOIS FED. AID PROJECT			CONTRACT NO. 72E04	