

STATE OF ILLINOIS
DEPARTMENT OF TRANSPORTATION
DIVISION OF HIGHWAYS

**PROPOSED
HIGHWAY PLANS**

F.A.P. ROUTE 685 (IL 9 / IL 94) OVER
BRANCH OF CAMP CREEK / TILTON CREEK
SECTION (115)B-2
PROJECT ACF-0685 (036)
CULVERT REPLACEMENT
HANCOCK COUNTY
C-96-016-12

| | | | | |
|---------------------|----------|--------------------|--------------|-----------|
| F.A.P. RTE. | SECTION | COUNTY | TOTAL SHEETS | SHEET NO. |
| 685 | (115)B-2 | HANCOCK | 28 | 1 |
| FED. ROAD DIST. NO. | ILLINOIS | CONTRACT NO. 72F07 | | |

FOR INDEX OF SHEETS, SEE SHEET NO. 2



ADT = 1100 (2011)
% SU = 100 (2011)
% MU = 50 (2011)
TOWNSHIP: DURHAM
FUNCTIONAL CLASSIFICATION: MINOR NON-URBAN ARTERIAL

STATE OF ILLINOIS
DEPARTMENT OF TRANSPORTATION
DIVISION OF HIGHWAYS

SUBMITTED July 31 2014
Ryan Z. Orick
DEPUTY DIRECTOR OF HIGHWAYS, REGION FOUR ENGINEER

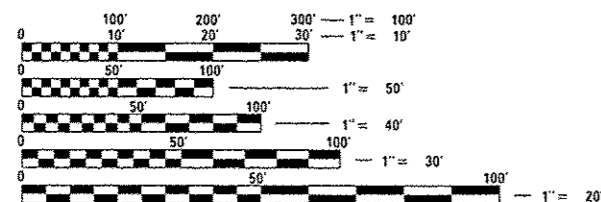
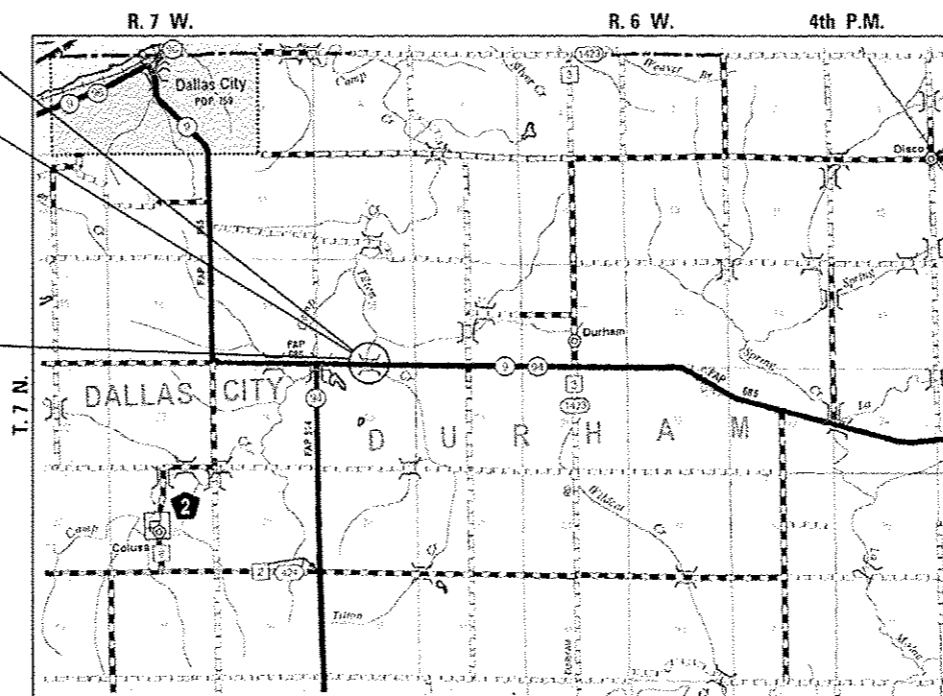
Oct 17 2014
John D. Baranzelli, P.E.
acting ENGINEER OF DESIGN AND ENVIRONMENT

Oct 17 2014
Omer Osman, P.E.
DIRECTOR OF HIGHWAYS, CHIEF ENGINEER

BEGIN PROJECT
STA 630+79

PROPOSED PRECAST
TRIPLE BARREL CONCRETE
BOX CULVERT
(10'-0"W X 10'-0"H)
OVER BRANCH OF
CAMP CREEK / TILTON CREEK
EX SN 034-0010
PR SN 034-2528
E-STA 633+00.54

END PROJECT
STA. 634+50



FULL SIZE PLANS HAVE BEEN PREPARED USING STANDARD ENGINEERING SCALES. REDUCED SIZED PLANS WILL NOT CONFORM TO STANDARD SCALES. IN MAKING MEASUREMENTS ON REDUCED PLANS, THE ABOVE SCALES MAY BE USED.

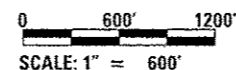
J.U.L.I.E.
JOINT UTILITY LOCATION INFORMATION FOR EXCAVATION
1-800-892-0123
OR 811

SENIOR TEAM ENGINEER: SAL MADONIA 217-782-4760
TEAM MANAGER: JONATHAN COX 217-782-1378

CONTRACT NO. 72F07

LOCATION MAP

GROSS LENGTH OF PROJECT = 371.00 FEET = 0.070 MILES
NET LENGTH OF PROJECT = 76.00 FEET = 0.014 MILES



Allen Henderson & Associates, Inc.
Civil and Structural Engineers Springfield, IL
62703 Phone: (217)544-8033 IL Design Firm
No. 184-001907



Christopher P. Kroll 7/29/14
EXPIRATION: 11/30/2015

PRINTED BY THE AUTHORITY
OF THE STATE OF ILLINOIS