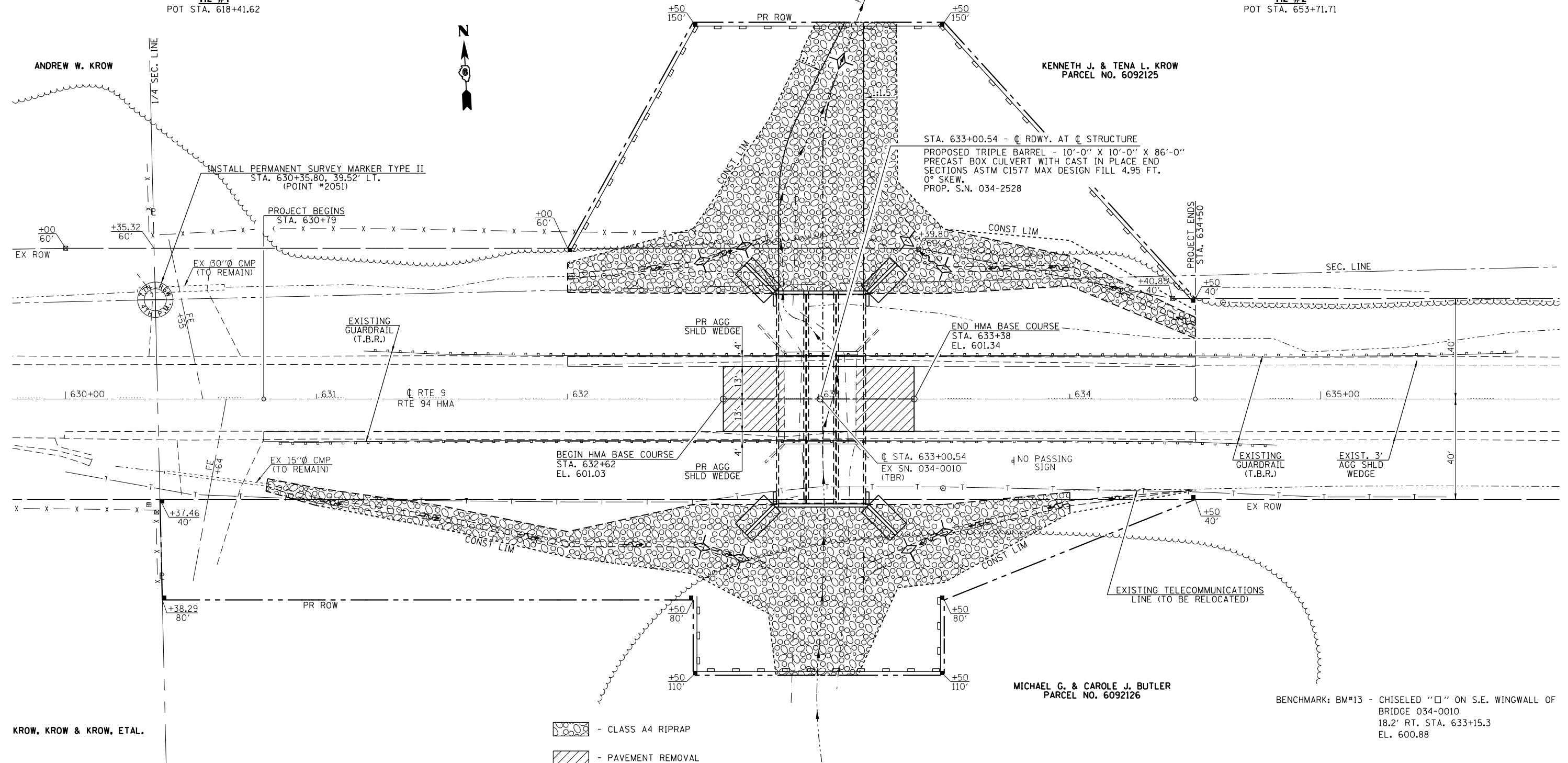
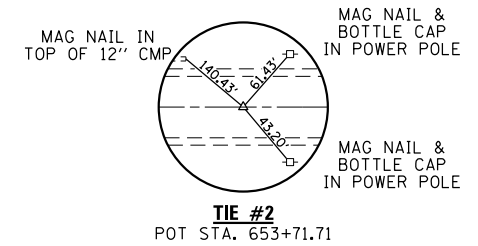
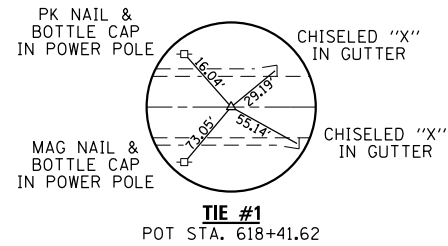
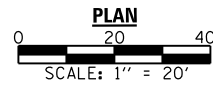


SECTION 18, T. 7 N., R. 6 W., 4TH P.M.



- CLASS A4 RIPRAP
- PAVEMENT REMOVAL

SECTION 19, T. 7 N., R. 6 W., 4TH P.M.



BRANCH OF CAMP CREEK 0.4 MI. OF IL. 94

POINT #	NORTHING	EASTING	STATION	OFFSET	DESCRIPTION	MONUMENT	TYPE	TIFF#
2051	1431482.002	2029412.072	630+35.8	-39.52	S 1/4 COR SEC 18, T-7-N, R-6-W, 4th PM HANCOCK CO.	5/8" REBAR	TYPE II	3571.TIF

KROW, KROW & KROW, ETAL.

FILE NAME =	USER NAME = *USER*	DESIGNED -	REVISED -	<p>Allen Henderson & Associates, Inc. Civil and Structural Engineers Springfield, IL 62703 Phone: (217)544-8033 IL Design Firm No. 184-001907</p>	ROADWAY PLAN	F.A.P. RTE. 685	SECTION (115)B-2	COUNTY HANCOCK	TOTAL SHEETS 28	SHEET NO. 11	
*FILEL#		DRAWN -	REVISED -		SCALE: 1" = 20'	SHEET NO. 1 OF 1 SHEETS	STATIONING STA. 630+00 TO STA. 634+50		CONTRACT NO. 72F07		
		CHECKED -	REVISED -				FED. ROAD DIST. NO.		ILLINOIS FED. AID PROJECT		
		DATE -	REVISED -								