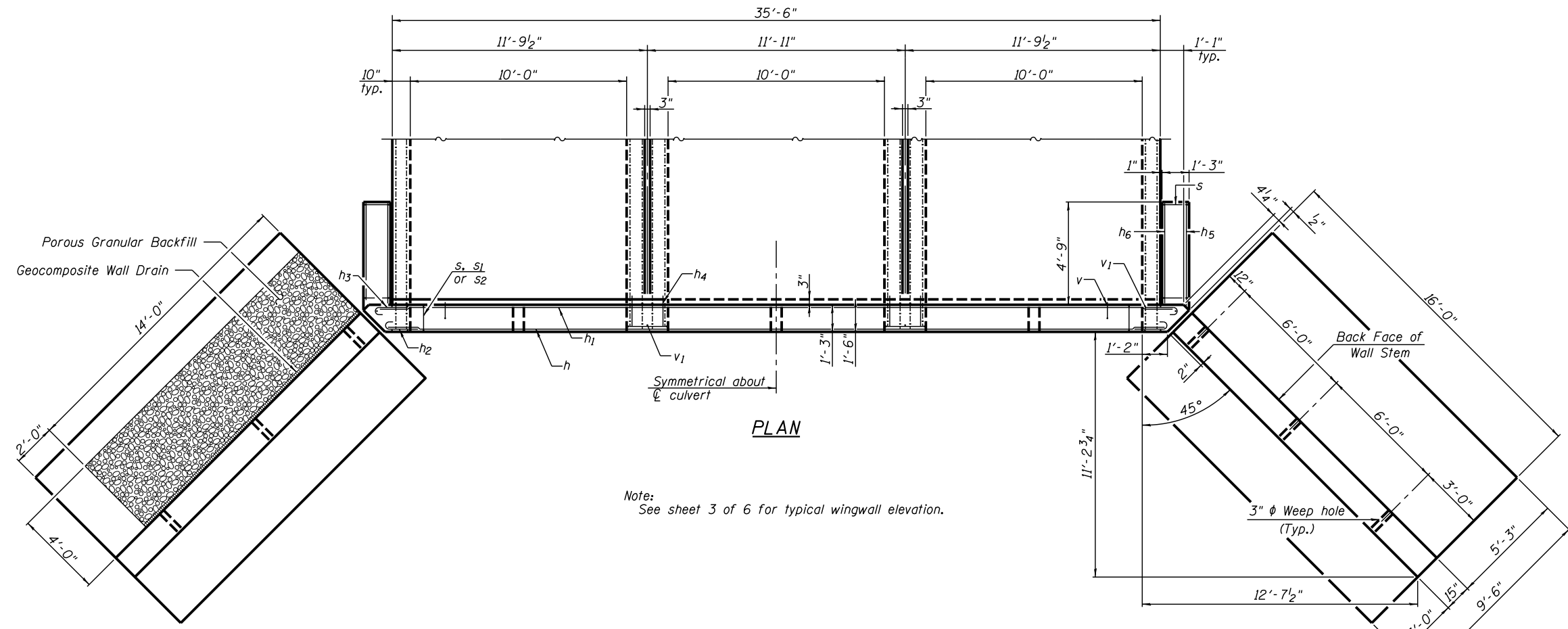


**ONE END SECTION
BILL OF MATERIAL**
(For information only)

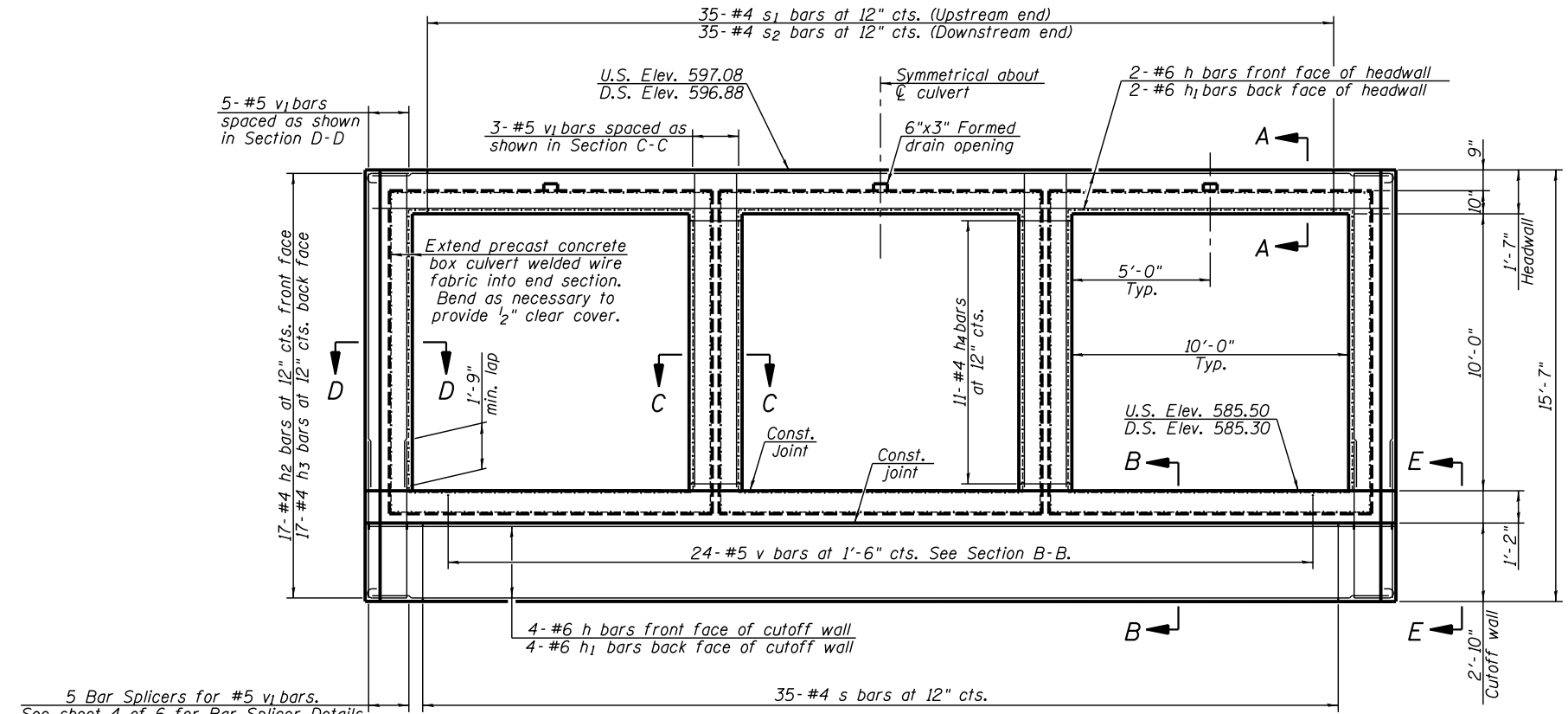
| Bar | No. | Size | Length | Shape |
|----------------------------------|-----|------|---------|-------|
| h | 6 | #6 | 36'-0" | — |
| h ₁ | 6 | #6 | 36'-9" | — |
| h ₂ | 34 | #4 | 1'-7" | ┌ |
| h ₃ | 34 | #4 | 2'-0" | ┌ |
| h ₄ | 22 | #4 | 4'-2" | ┌ |
| h ₅ | 8 | #6 | 4'-9" | ┌ |
| h ₆ | 8 | #6 | 6'-6" | ┌ |
| h ₇ | 56 | #4 | 15'-8" | — |
| n(E) | 44 | #7 | 7'-8" | ┌ |
| s | 45 | #4 | 7'-11" | ┌ |
| s ₁ | 35 | #4 | 4'-4" | ┌ |
| s ₂ | 35 | #4 | 4'-5" | ┌ |
| i | 98 | #6 | 9'-3" | — |
| v | 24 | #5 | 3'-9" | ┌ |
| v ₁ | 16 | #5 | 11'-4" | — |
| v ₂ | 44 | #7 | 13'-4" | — |
| v ₃ | 34 | #4 | 13'-4" | — |
| w | 40 | #5 | 15'-9" | — |
| Concrete Box Culverts | | | Cu. Yd. | 51.7 |
| Reinforcement Bars | | | Pound | 5770 |
| Reinforcement Bars, Epoxy Coated | | | Pound | 690 |
| Bar Splicers | | | Each | 10 |
| Geocomposite Wall Drain | | | Sq. Yd. | 31 |
| Porous Granular Backfill | | | Cu. Yd. | 42 |

*s₁ bar is to be placed on the upstream end only.
*s₂ bar is to be placed on the downstream end only.

The above pay items will not be measured for payment but shall be included in the contract unit price for Box Culvert End Sections of the culvert number specified.



Note:
See sheet 3 of 6 for typical wingwall elevation.



END ELEVATION

Wingwall omitted in this view for clarity.
See sheet 3 of 6 for additional wingwall details.

