

F.A.P. RTE.	SECTION	COUNTY	TOTAL SHEETS	SHEET NO.
**	(119)RS-11, (113)RS-6	HANCOCK	95	1
		ILLINOIS	CONTRACT NO. 72F32	

D-96-047-12

STATE OF ILLINOIS
DEPARTMENT OF TRANSPORTATION
DIVISION OF HIGHWAYS
**PROPOSED
HIGHWAY PLANS**

HIGHWAY CLASSIFICATION

F.A.P. ROUTE 685 (IL 9) & FAP ROUTE 510 (IL 96)

CLASSIFICATION: MINOR ARTERIAL

ADT: 3,050 (IL 9) & 2,049 (IL 9/IL 96) (2011) - CURRENT YR PV = 95% (2011)
ADT: 3,142 (IL 9) & 2,153 (IL 9/IL 96) (2014) - CONST. YR SU = 4%
ADT: 3,722 (IL 9) & 2,500 (IL 9/IL 96) (2031) - 20 YR MU = 1%
DESIGN SPEED: 35-60 MPH
POSTED SPEED: 30-55 MPH

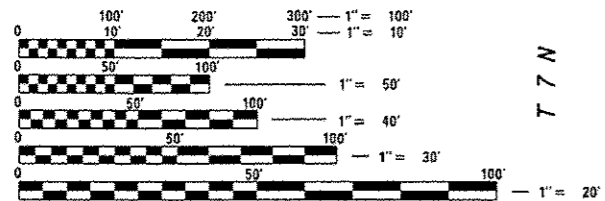
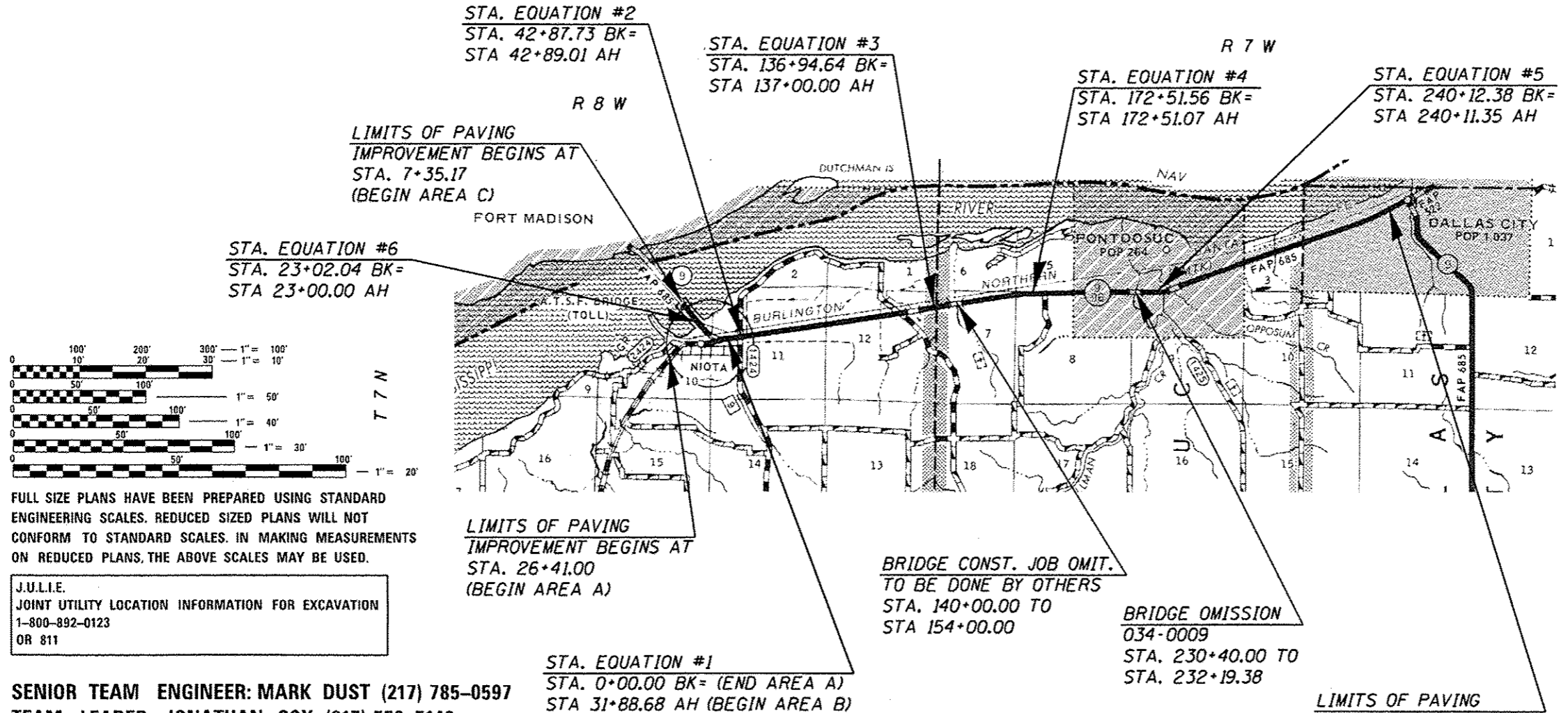
FAP ROUTE 685 (IL 9) / FAP ROUTE 510 (IL 96)
SECTION (119)RS-11, (113)RS-6

(3P) RESURFACING, SPOT (3R)
HANCOCK COUNTY
C-96-047-12



INDEX OF SHEETS

- 1 COVER SHEET
- 2 INDEX OF SHEETS & GENERAL NOTES
- 3 - 5 SUMMARY OF QUANTITIES (3)
- 6 - 14 SCHEDULE OF QUANTITIES (9)
- 15 - 25 TYPICAL SECTIONS (11)
- 26 - 29 ALIGNMENT TIES AND BENCHMARKS (4)
- 30 - 47 PLAN AND PROFILE SHEETS (18)
- 48 SUPER ELEVATION DETAILS (1)
- 49 - 55 STORM WATER POLLUTION PREVENTION PLAN (7)
- 56 DRAINAGE DETAILS (1)
- 57 - 59 PAVEMENT MARKING DETAIL (3)
- 60 - 65 PROJECT DETAILS (6)
- 66 - 95 CROSS SECTIONS (30)



J.U.L.I.E.
JOINT UTILITY LOCATION INFORMATION FOR EXCAVATION
1-800-892-0123
OR 811

SENIOR TEAM ENGINEER: MARK DUST (217) 785-0597
TEAM LEADER: JONATHAN COX (217) 558-5140

CONTRACT NO. 72F32

GROSS LENGTH = 33,851.75 FT. = 6.41 MILE
NET LENGTH = 33,096.75 FT. = 6.27 MILE

LIMITS OF PAVING
IMPROVEMENT ENDS AT
STA. 330+36.62
(END AREA B)

STATE OF ILLINOIS
DEPARTMENT OF TRANSPORTATION
DIVISION OF HIGHWAYS

SUBMITTED June 6 2014
Roger A. Driskell, Jr.
DEPUTY DIRECTOR OF HIGHWAYS, REGION ENGINEER

Oct 17 2014
John D. Baranzoni, P.E.
ENGINEER OF DESIGN AND ENVIRONMENT

Oct 17 2014
Omer Osman, P.E.
DIRECTOR OF HIGHWAYS, CHIEF ENGINEER

**PRINTED BY THE AUTHORITY
OF THE STATE OF ILLINOIS**