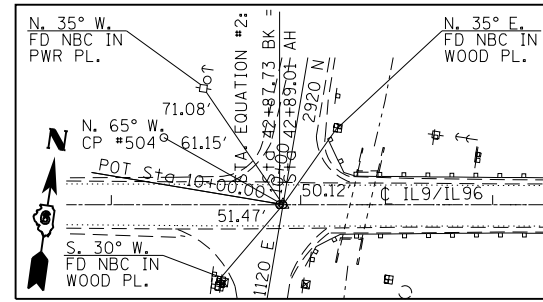
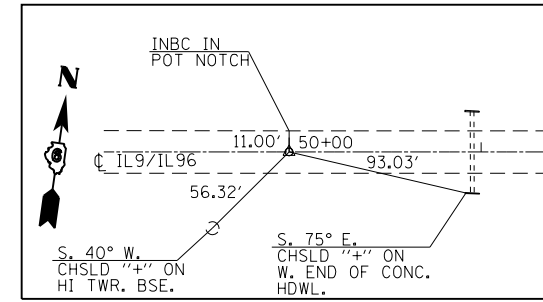


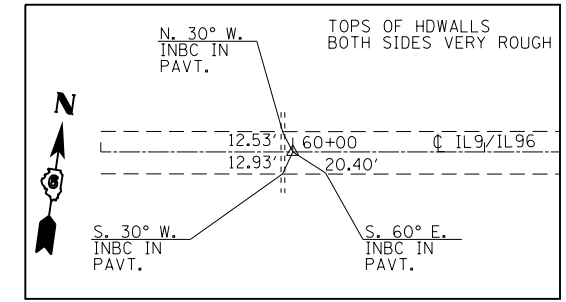
IL 9/IL 96 - STA EQ - 42+87.73 BK = 42+89.01 AH
MAG NAIL IN WASHER



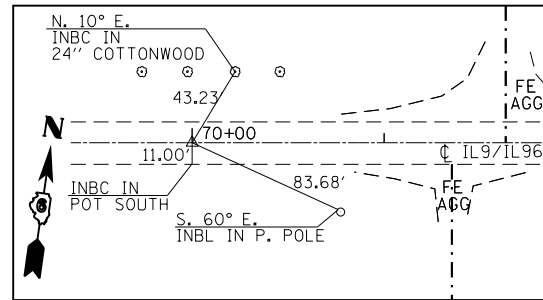
IL 9/IL 96 - STA. 42+90.79 - SR 1120 E STA. 10+00.00
MAG MAIL IN WASHER



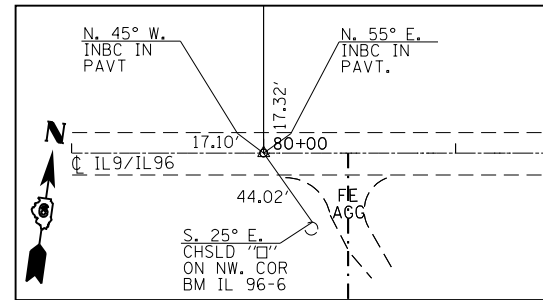
IL 9/IL96 - STA. 50+00.00 - POT - MAG NAIL IN WASHER



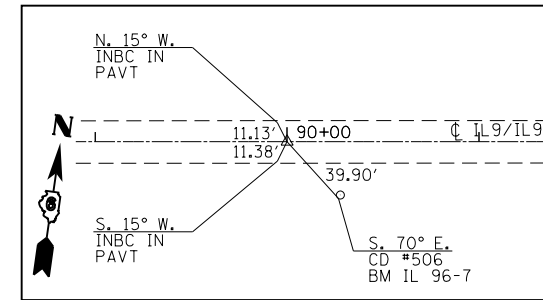
IL 9/IL96 - STA. 60+00.00 - POT - MAG NAIL IN WASHER



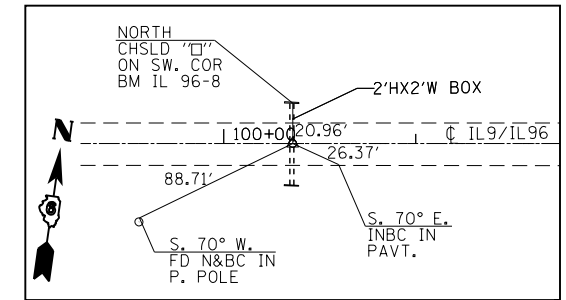
IL 9/IL 96 - STA. 70+00.00 - POT - MAG NAIL IN WASHER



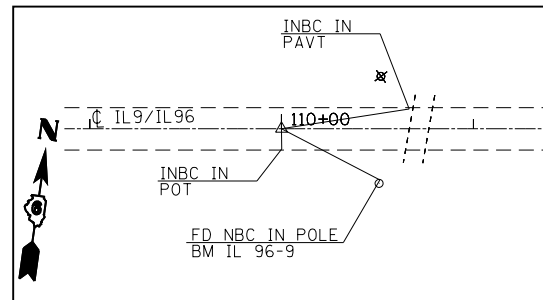
IL 9/IL 96 - STA. 80+00.00 - MNW - POT -
MAG NAIL IN WASHER



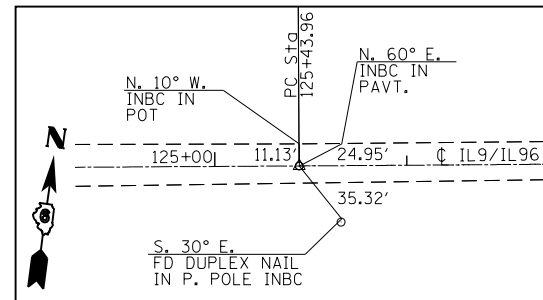
IL 9/IL 96 - STA. 90+00.00 - MNW - POT -
MAG NAIL IN WASHER



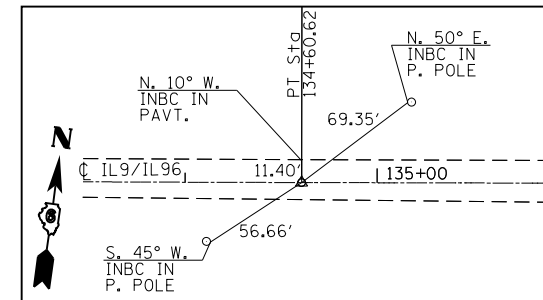
IL 9/IL 96 - STA. 100+35.94 - FD 5/8" REBAR -
MAG NAIL IN WASHER



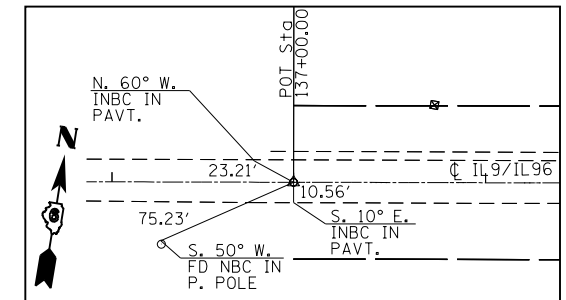
IL 9/IL 96 - STA. 110+00.00 - MNW - POT



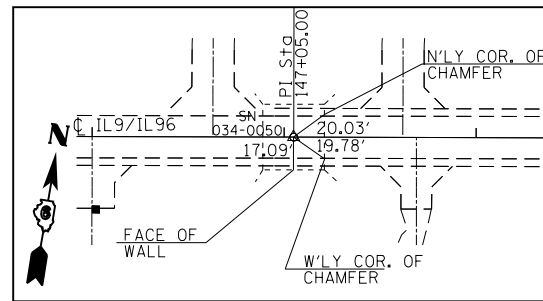
IL 9/IL 96 - STA. 125+43.96 - MNW - PC



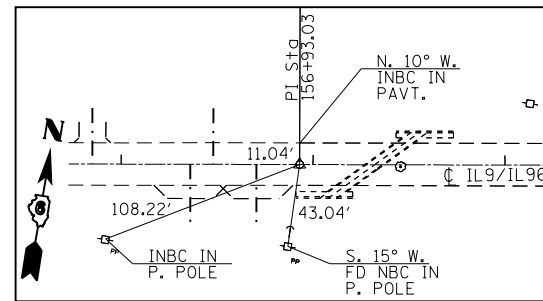
IL 9/IL 96 - STA. 134+60.62 - MNW - PT



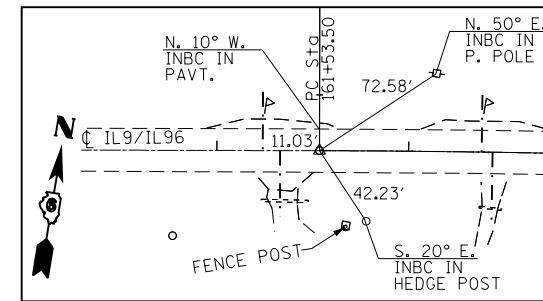
IL 9/IL 96 - POT - STA. EQ. - 136+94.64 BK =
137+00.00 AH - MNW



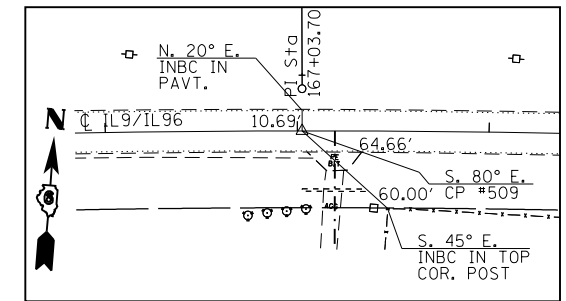
IL 9/IL 96 - STA. 147+05.00 - FD DRILL HOLE IN CHIS "X"
BRIDGE 034-0050



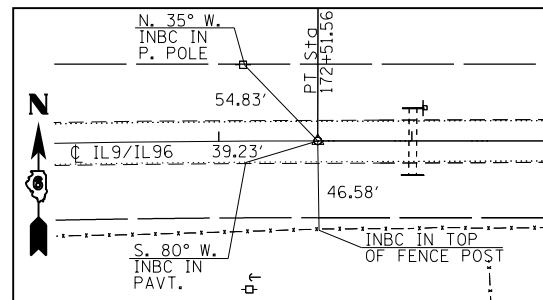
IL 9/IL 96 - STA. 156+93.03 - POT - FD PK NAIL IN CHIS "X"



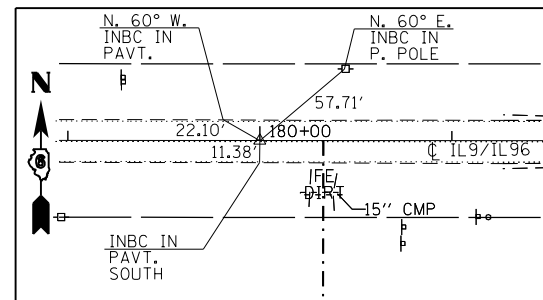
IL 9/IL 96 - STA. 161+53.50 - MNW - PC



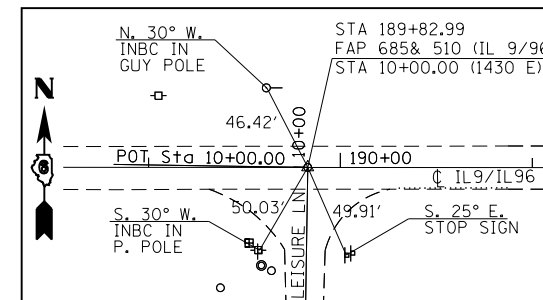
IL 9/IL 96 - STA. 167+02.53 - MNW - POC



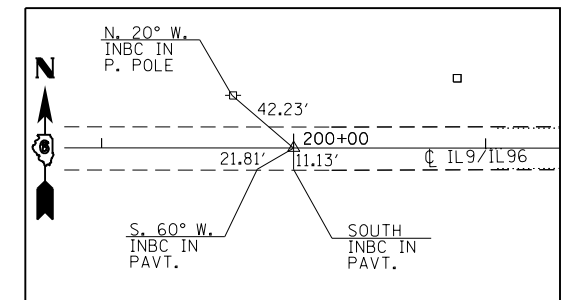
IL 9/IL 96 - PT - STA. EQ. - 172+51.56 BK =
PT - 172+51.01 AH - MNW



IL 9/IL 96 - STA. 180+00.00 - MNW - POT



IL 9/IL 96 - STA. 189+82.99 / 10.00.00 LEISURE LN. - MNW - POT



IL 9/IL 96 - STA. 200+00.00 - MNW - POT

FILE NAME = c:\pw\work\p\d\dot\sparksgw\10296720\06720\F32-sh\ATB.dgn	USER NAME = sparksgw	DESIGNED -	REVISED -	STATE OF ILLINOIS DEPARTMENT OF TRANSPORTATION	ALIGNMENT TIES & BENCHMARKS			F.A.P. RTE.	SECTION	COUNTY	TOTAL SHEETS	SHEET NO.
Default	PLOT DATE = Jun-06-2014 10:35:16AM	DRAWN -	REVISED -					SCALE:	SHEET 2 OF 4 SHEETS	STA.	TO STA.	(119)RS-11,113RS-6
		CHECKED -	REVISED -					CONTRACT NO. 72F32			ILLINOIS FED. AID PROJECT	
		DATE -	REVISED -								**685 & 510	