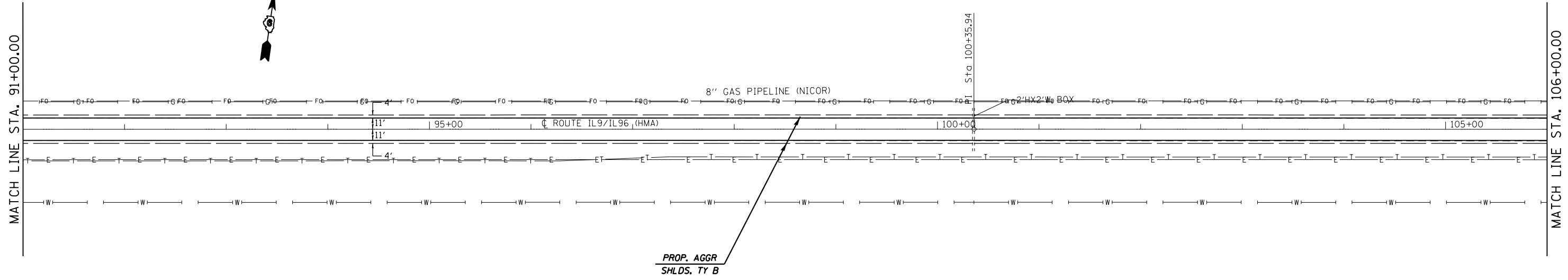


(7B)

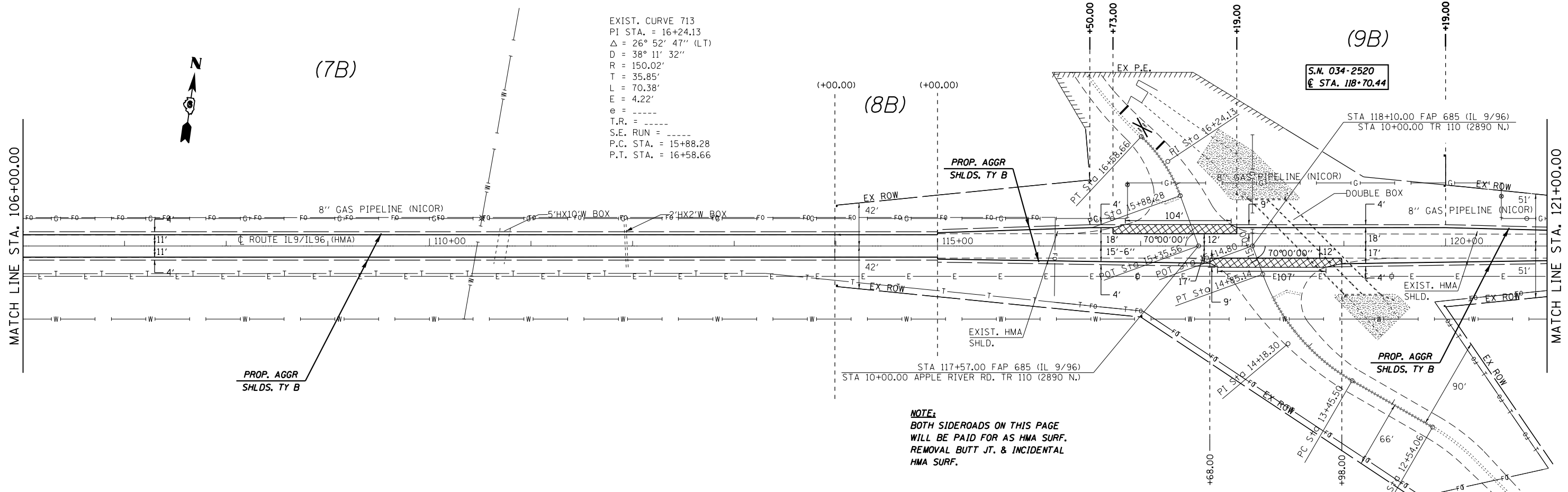


(7B)

EXIST. CURVE 713
 PI STA. = 16+24.13
 Δ = 26° 52' 47" (LT)
 D = 38° 11' 32"
 R = 150.02'
 T = 35.85'
 L = 70.38'
 E = 4.22'
 e = -----
 T.R. = -----
 S.E. RUN = -----
 P.C. STA. = 15+88.28
 P.T. STA. = 16+58.66

(9B)

S.N. 034-2520
 STA. 118+70.44



NOTE:
 BOTH SIDEROADS ON THIS PAGE
 WILL BE PAID FOR AS HMA SURF.
 REMOVAL BUTT JT. & INCIDENTAL
 HMA SURF.

FILE NAME =	USER NAME = sparksgw	DESIGNED - JWC	REVISED -
ei:\pw\work\p\id\sparksgw\10296720\0672f32-sht-plan_rural.dgn		DRAWN - JWC	REVISED -
Default	PLOT SCALE = 100.0000' / in.	CHECKED - JWC	REVISED -
	PLOT DATE = Jun-06-2014 10:35:31AM	DATE -	REVISED -

**STATE OF ILLINOIS
 DEPARTMENT OF TRANSPORTATION**

PLAN SHEETS - IL 91L 96

SCALE: 50 SHEET 6 OF 18 SHEETS STA. 91+00.00 TO STA. 121+00.00

F.A.P. RTE.	SECTION	COUNTY	TOTAL SHEETS	SHEET NO.
	(119)RS-11,(113)RS-6	HANCOCK	95	35
CONTRACT NO. 72F32				

**685 & 510