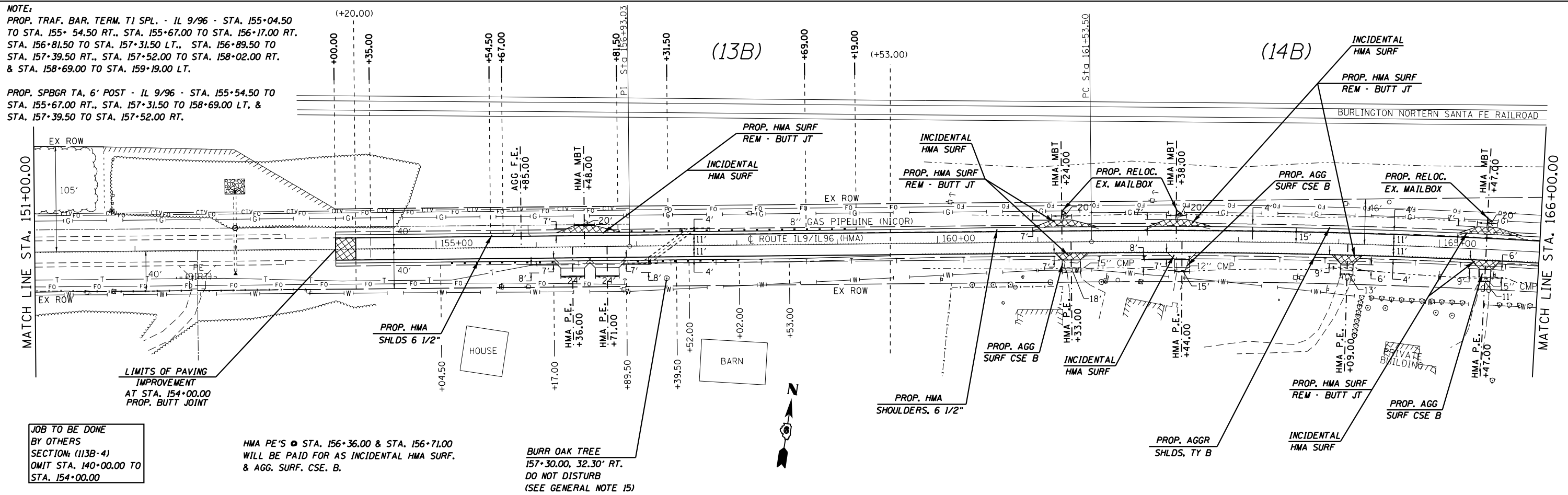


NOTE:
 PROP. TRAF. BAR, TERM. T1 SPL. - IL 9/96 - STA. 155+04.50 TO STA. 155+54.50 RT., STA. 155+67.00 TO STA. 156+17.00 RT., STA. 156+81.50 TO STA. 157+31.50 LT., STA. 156+89.50 TO STA. 157+39.50 RT., STA. 157+52.00 TO STA. 158+02.00 RT. & STA. 158+69.00 TO STA. 159+19.00 LT.

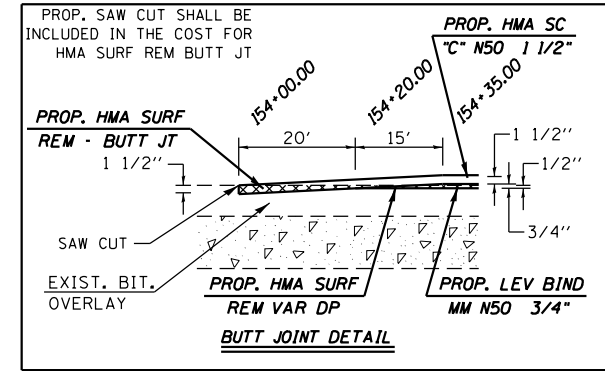
PROP. SPBGR TA, 6' POST - IL 9/96 - STA. 155+54.50 TO STA. 155+67.00 RT., STA. 157+31.50 TO 158+69.00 LT., & STA. 157+39.50 TO STA. 157+52.00 RT.



JOB TO BE DONE BY OTHERS
 SECTION: (113B-4)
 OMIT STA. 140+00.00 TO STA. 154+00.00

HMA PE'S @ STA. 156+36.00 & STA. 156+71.00 WILL BE PAID FOR AS INCIDENTAL HMA SURF. & AGG. SURF. CSE. B.

BURR OAK TREE 157+30.00, 32.30' RT. DO NOT DISTURB (SEE GENERAL NOTE 15)



FILE NAME =	USER NAME = sparksgw	DESIGNED - JWC	REVISED -	STATE OF ILLINOIS DEPARTMENT OF TRANSPORTATION	PLAN SHEETS - IL 91L 96			F.A.P. RTE.	SECTION	COUNTY	TOTAL SHEETS	SHEET NO.
ci:\pwwork\pwwork\sparksgw\10296720\0672f32-sht-plan_rural.dgn		DRAWN - JWC	REVISED -		SCALE: 50	SHEET 8 OF 18 SHEETS	STA. 151+00.00 TO STA. 162+00.00	••	(119)RS-11,(113)RS-6	HANCOCK	95	37
Default	PLOT SCALE = 100.0000' / in.	CHECKED - JWC	REVISED -					CONTRACT NO. 72F32				
	PLOT DATE = Jun-06-2014 10:35:32AM	DATE -	REVISED -					ILLINOIS FED. AID PROJECT				