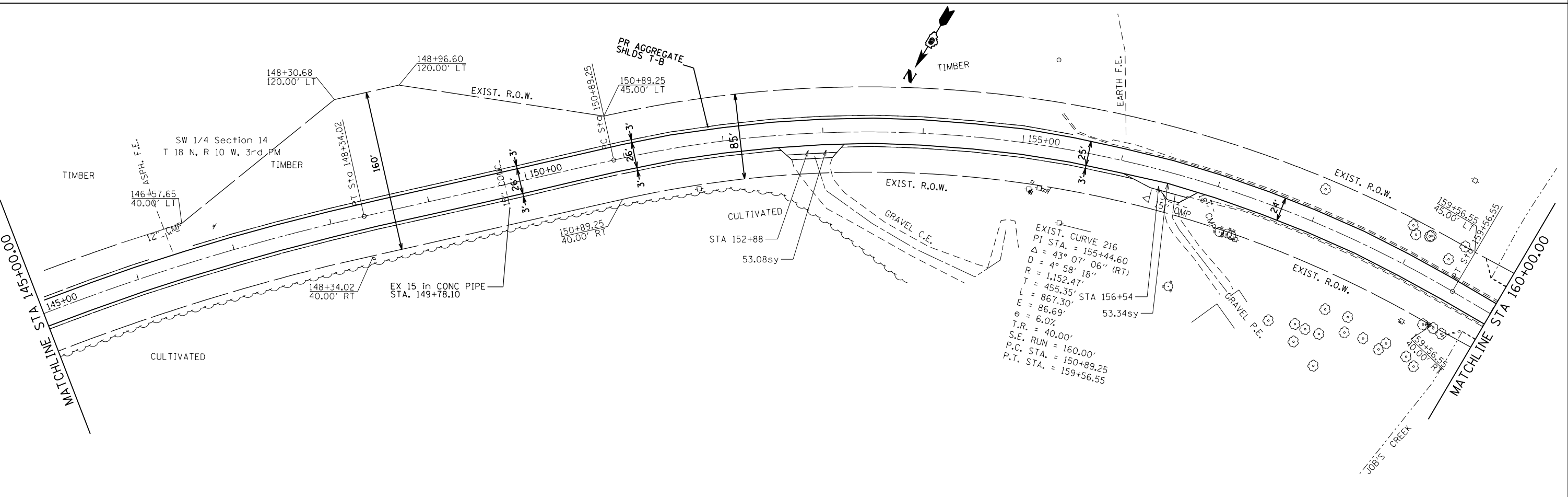


EXIST. CURVE 214
 PI STA. = 143+75.62
 $\Delta = 23^\circ 27' 09''$ (RT)
 $D = 2^\circ 31' 18''$ (RT)
 $R = 2,272.05'$
 $T = 471.60'$
 $L = 930.00'$
 $E = 48.43'$
 $e = 5.2\%$
 T.R. = 40.00'
 S.E. RUN = 139.00'
 P.C. STA. = 139+04.02
 P.T. STA. = 148+34.02

SW 1/4 Section 14
 T 18 N, R 10 W, 3rd PM



EXIST. CURVE 216
 PI STA. = 155+44.60
 $\Delta = 43^\circ 07' 06''$ (RT)
 $D = 4^\circ 58' 18''$
 $R = 1,152.47'$
 $T = 455.35'$ STA 156+54
 $L = 867.30'$ 53.34sy
 $E = 86.69'$
 $e = 6.0\%$
 T.R. = 40.00'
 S.E. RUN = 160.00'
 P.C. STA. = 150+89.25
 P.T. STA. = 159+56.55

FILE NAME =	USER NAME = sparksgw	DESIGNED -	REVISED -	STATE OF ILLINOIS DEPARTMENT OF TRANSPORTATION	PLAN SHEETS				F.A.P. RE.	SECTION	COUNTY	TOTAL SHEETS	SHEET NO.			
Default	Default	DRAWN -	REVISED -		SCALE:	SHEET	OF	SHEETS	STA.	TO	STA.	614	(146) RS-4	CASS	28	15
		CHECKED -	REVISED -									CONTRACT NO. 72F70				
		DATE -	REVISED -									ILLINOIS FED. AID PROJECT				