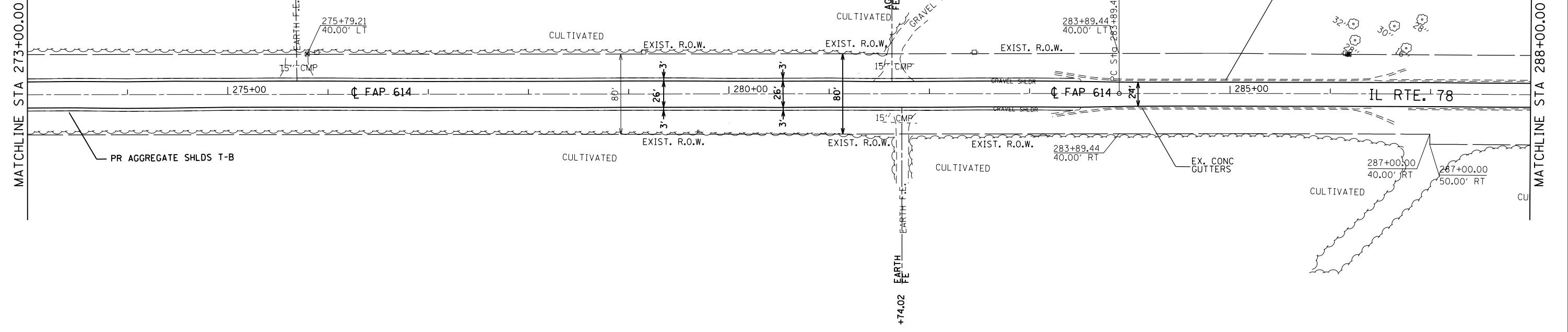


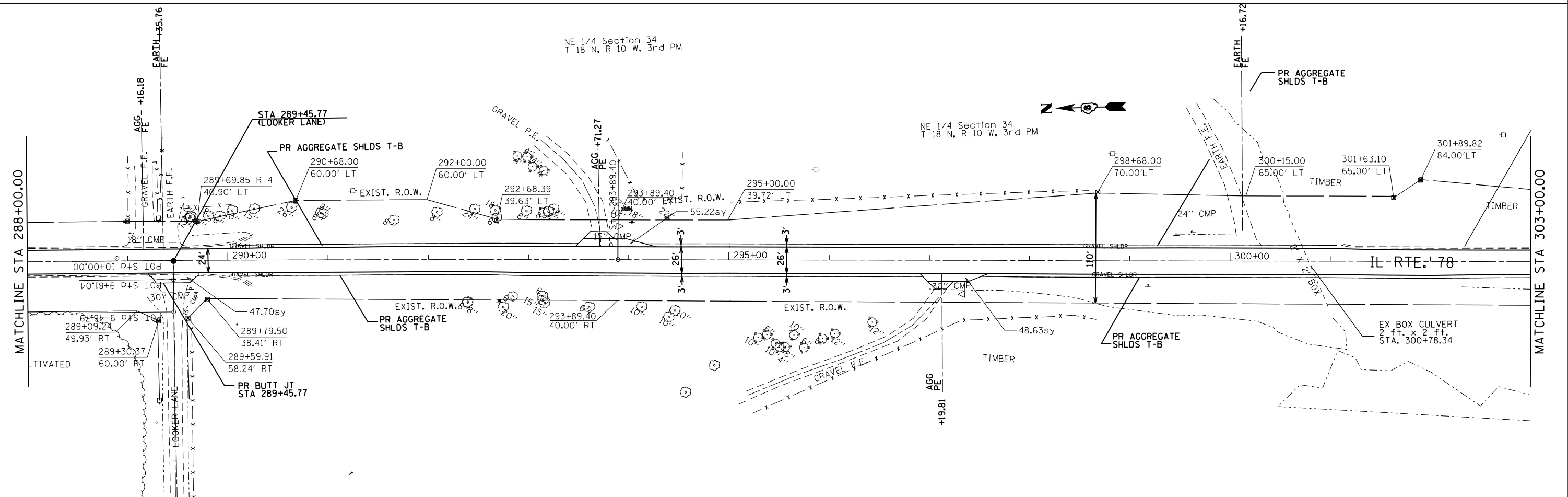
SE 1/4 Section 27  
T 18 N, R 10 W, 3rd PM

EXIST. CURVE 348  
PI STA. = 288+89.44  
 $\Delta = 1^{\circ} 09' 01''$  (RT)  
D = 0° 06' 54"  
R = 49,812.40'  
T = 500.00'  
L = 999.97'  
E = 2.51'  
T.R. = -----  
S.E. RUN = 283+89.44  
P.C. STA. = 283+89.44  
P.T. STA. = 293+89.40



NE 1/4 Section 34  
T 18 N, R 10 W, 3rd PM

NE 1/4 Section 34  
T 18 N, R 10 W, 3rd PM



FILE NAME =	USER NAME = sparksgw	DESIGNED -	REVISED -	<b>STATE OF ILLINOIS DEPARTMENT OF TRANSPORTATION</b>	<b>PLAN SHEETS</b>				F.A.P. RTE.	SECTION	COUNTY	TOTAL SHEETS	SHEET NO.		
Default	c:\pwork\pwork\sparksgw\10313810\067270-Plan1.dgn	DRAWN -	REVISED -		SCALE:	SHEET	OF	SHEETS	STA.	TO STA.	614	(146) RS-4	CASS	28	20
	PLOT SCALE = 100.0000' / in.	CHECKED -	REVISED -								CONTRACT NO. 72F70				
	PLOT DATE = Jun-06-2014 10:51:43AM	DATE -	REVISED -								ILLINOIS FED. AID PROJECT				