

F.A.P. RTE.	SECTION	COUNTY	TOTAL SHEETS	SHEET NO.
34	(2)RS-4; (3)RS-5	MENARD	45	1
		ILLINOIS	CONTRACT NO.	72F71

STATE OF ILLINOIS
DEPARTMENT OF TRANSPORTATION
DIVISION OF HIGHWAYS

**PROPOSED
HIGHWAY PLANS**

FAP ROUTE 34 (IL 97)
SECTION (2)RS-4; (3)RS-5

3P RESURFACING
MENARD COUNTY

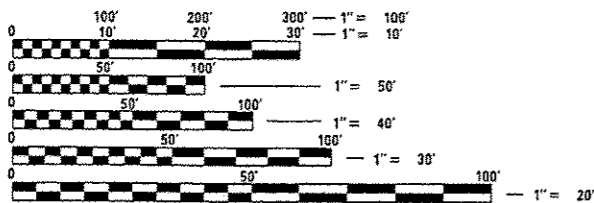
C-96-003-13

INDEX OF SHEETS

- 1 COVER
- 2 GENERAL NOTES
- 3-6 SUMMARY OF QUANTITIES
- 7-11 SCHEDULE OF QUANTITIES
- 12-25 TYPICAL SECTIONS
- 26-38 PLAN SHEETS
- 39 SUPERELEVATION DETAILS
- 40-41 ENTRANCE & SIDE ROAD DETAILS
- 42 ENTRANCE SCHEDULE
- 43-44 SIDEWALK DETAILS
- 45 BUTT JOINT & RAMP DETAIL

STANDARDS

000001-06	701301-04
424001-07	701306-03
442201-03	701311-03
606101-04	701326-04
630001-10	701501-06
635006-03	701801-05
701001-02	701901-03
701006-05	780001-04
701201-04	781001-03

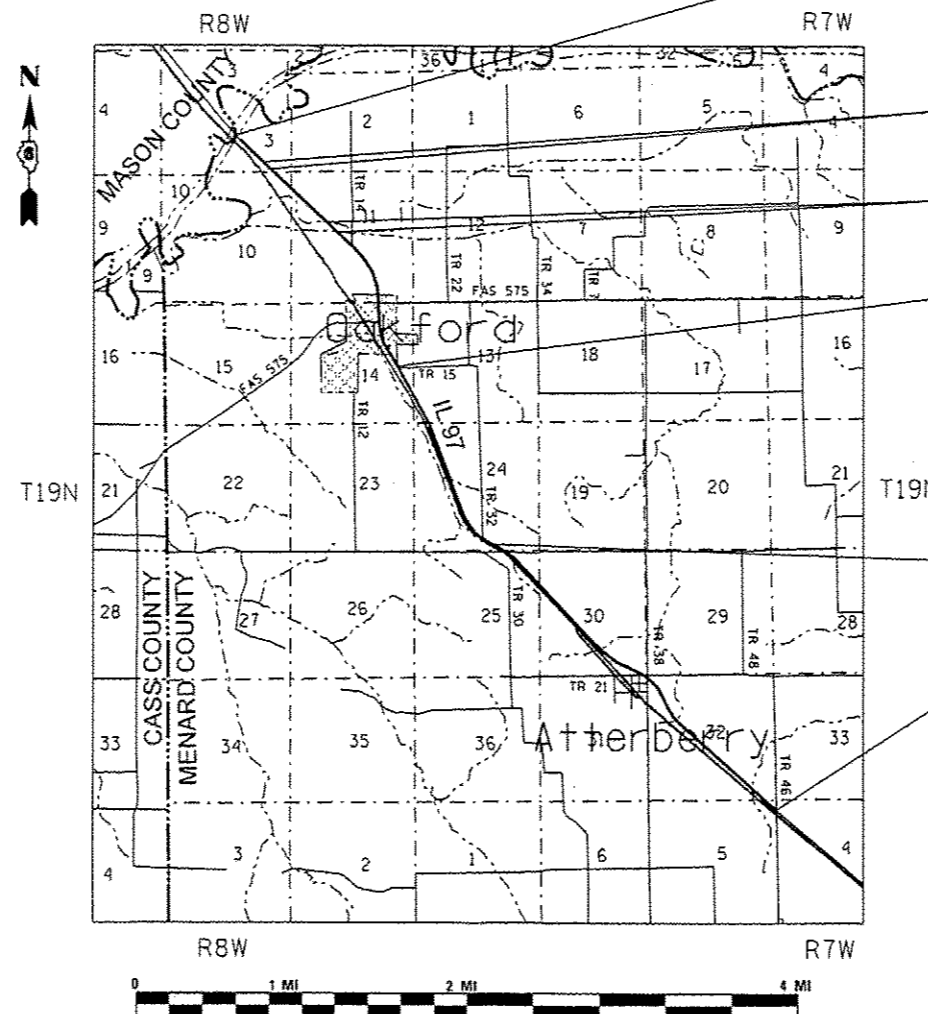


FULL SIZE PLANS HAVE BEEN PREPARED USING STANDARD ENGINEERING SCALES. REDUCED SIZED PLANS WILL NOT CONFORM TO STANDARD SCALES. IN MAKING MEASUREMENTS ON REDUCED PLANS, THE ABOVE SCALES MAY BE USED.

J.U.L.I.E.
JOINT UTILITY LOCATION INFORMATION FOR EXCAVATION
1-800-892-0123
OR 811

PROJECT ENGINEER: KEITH DONOVAN (217) 782-4761
TEAM MANAGER: TOM COX (217) 557-6349

CONTRACT NO. 72F71



PROJECT BEGINS
STA 734+05.88

BRIDGE OMISSION
STA 752+03.47 TO
STA 759+98.44

BRIDGE OMISSION
STA 789+28.86 TO
STA 791+35.99

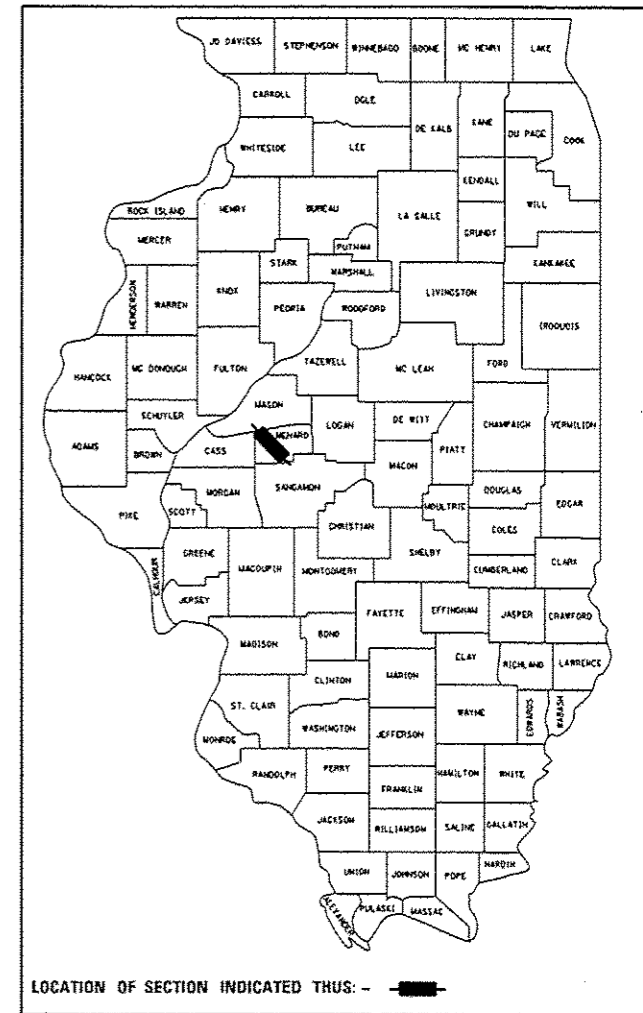
STA EQUATION:
STA 843+20.70 BK =
STA 843+21.23 AH

STA EQUATION:
STA 940+61.30 BK =
STA 940+66.35 AH

PROJECT ENDS
STA 1100+83.60

GROSS LENGTH = 37,071.53 FT. = 7.02 MILES
NET LENGTH = 35,669.86 FT. = 6.76 MILES

D-96-003-13



ADT: 1,850 (2013)
MU: 2.13%
SU: 9.48%

STATE OF ILLINOIS
DEPARTMENT OF TRANSPORTATION
DIVISION OF HIGHWAYS

SUBMITTED June 6, 2014
Roger L. Dinkell, Jr.
DEPUTY DIRECTOR OF HIGHWAYS, REGION ENGINEER

Oct 17, 2014
John D. Baranelli, P.E.
ENGINEER OF DESIGN AND ENVIRONMENT

Oct 17, 2014
Amer Osman, P.E.
DIRECTOR OF HIGHWAYS, CHIEF ENGINEER

PRINTED BY THE AUTHORITY
OF THE STATE OF ILLINOIS