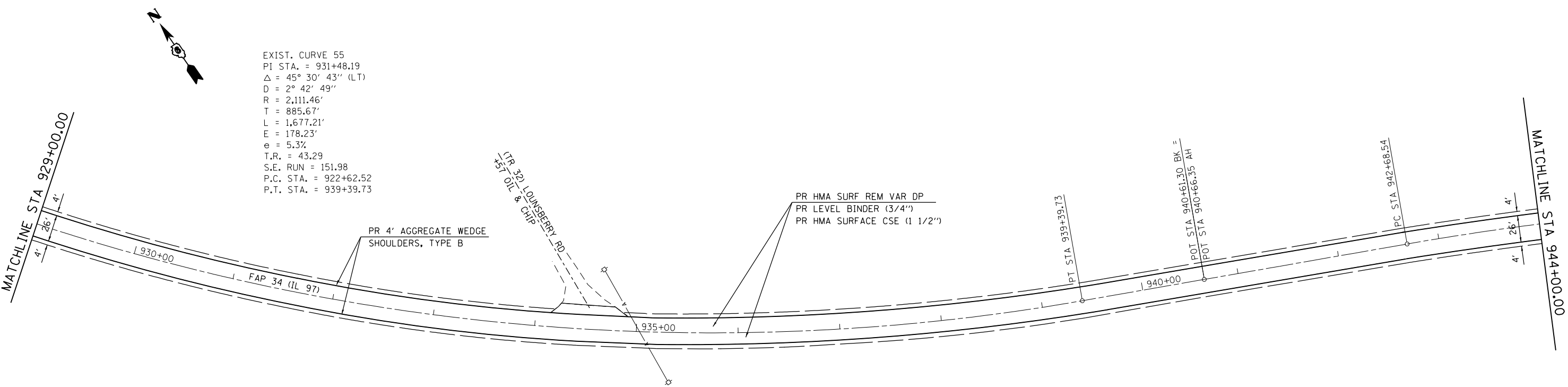


EXISTING 1' HMA SHOULDERS SHALL BE PAVED MONOLITHICALLY WITH THE LEVELING BINDER AND HMA SURFACE COURSE. SEE TYPICAL SECTIONS.

SEE ENTRANCE DETAIL AND SCHEDULES FOR ADDITIONAL INFORMATION



EXISTING 1' HMA SHOULDERS SHALL BE PAVED MONOLITHICALLY WITH THE LEVELING BINDER AND HMA SURFACE COURSE. SEE TYPICAL SECTIONS.

SEE ENTRANCE DETAIL AND SCHEDULES FOR ADDITIONAL INFORMATION

FILE NAME =	USER NAME = sparksgw	DESIGNED -	REVISED -
c:\pwwork\pwwork\sparksgw\0313568\067271-sht-PLAN1.dgn		DRAWN -	REVISED -
Default	PLOT SCALE = 100.0000' / in.	CHECKED -	REVISED -
	PLOT DATE = Jun-06-2014 02:14:36PM	DATE -	REVISED -

**STATE OF ILLINOIS
DEPARTMENT OF TRANSPORTATION**

PLAN SHEETS			
FAP 34 (IL 97)			
SCALE: 1" = 50'	SHEET	OF	SHEETS
	STA.		TO STA.

F.A.P. RTE.	SECTION	COUNTY	TOTAL SHEETS	SHEET NO.
34	***	MENARD	45	32
CONTRACT NO.			72F 71	
ILLINOIS FED. AID PROJECT				