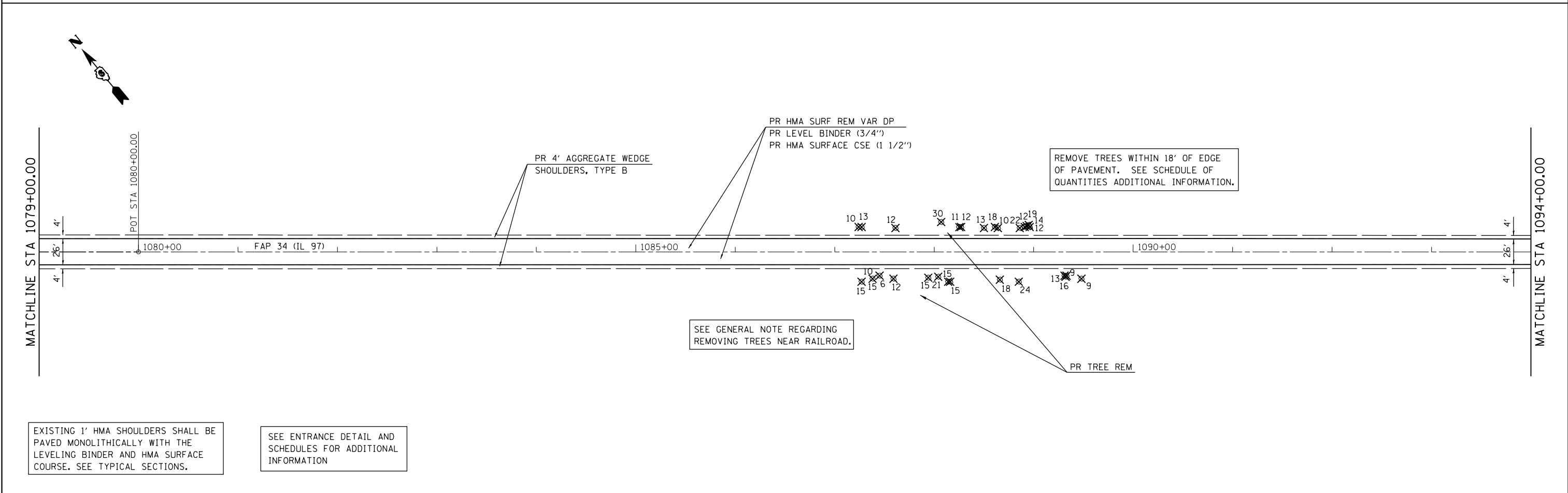


EXISTING 1' HMA SHOULDERS SHALL BE PAVED MONOLITHICALLY WITH THE LEVELING BINDER AND HMA SURFACE COURSE. SEE TYPICAL SECTIONS.

SEE ENTRANCE DETAIL AND SCHEDULES FOR ADDITIONAL INFORMATION



EXISTING 1' HMA SHOULDERS SHALL BE PAVED MONOLITHICALLY WITH THE LEVELING BINDER AND HMA SURFACE COURSE. SEE TYPICAL SECTIONS.

SEE ENTRANCE DETAIL AND SCHEDULES FOR ADDITIONAL INFORMATION

FILE NAME =	USER NAME = sparksgw	DESIGNED -	REVISED -
c:\pwwork\p\dot\sparksgw\10313568\067771-sht-PLAN1.dgn		DRAWN -	REVISED -
	PLOT SCALE = 100.0000' / in.	CHECKED -	REVISED -
Default	PLOT DATE = Jun-06-2014 02:14:37PM	DATE -	REVISED -

**STATE OF ILLINOIS
DEPARTMENT OF TRANSPORTATION**

**PLAN SHEETS
FAP 34 (IL 97)**

SCALE: 1" = 50' SHEET OF SHEETS STA. TO STA.

F.A.P. RTE.	SECTION	COUNTY	TOTAL SHEETS	SHEET NO.
34	***	MENARD	45	37
ILLINOIS FED. AID PROJECT			CONTRACT NO. 72F 71	