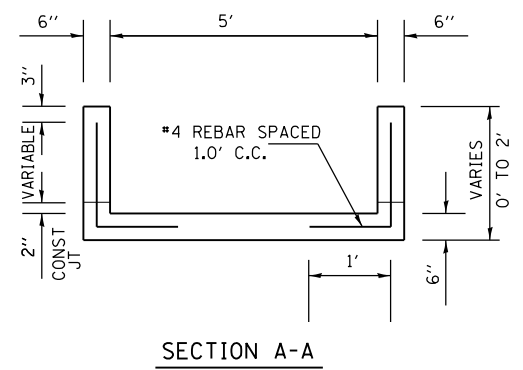
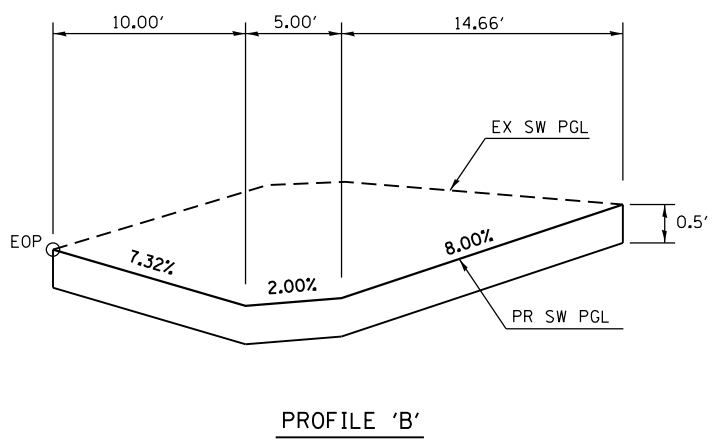
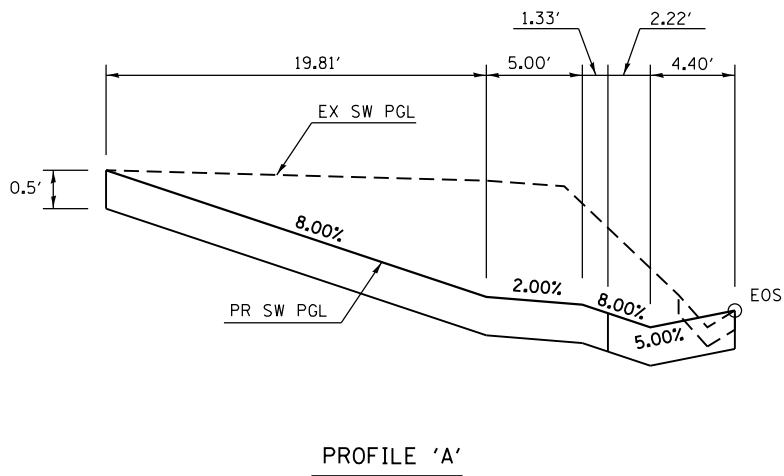
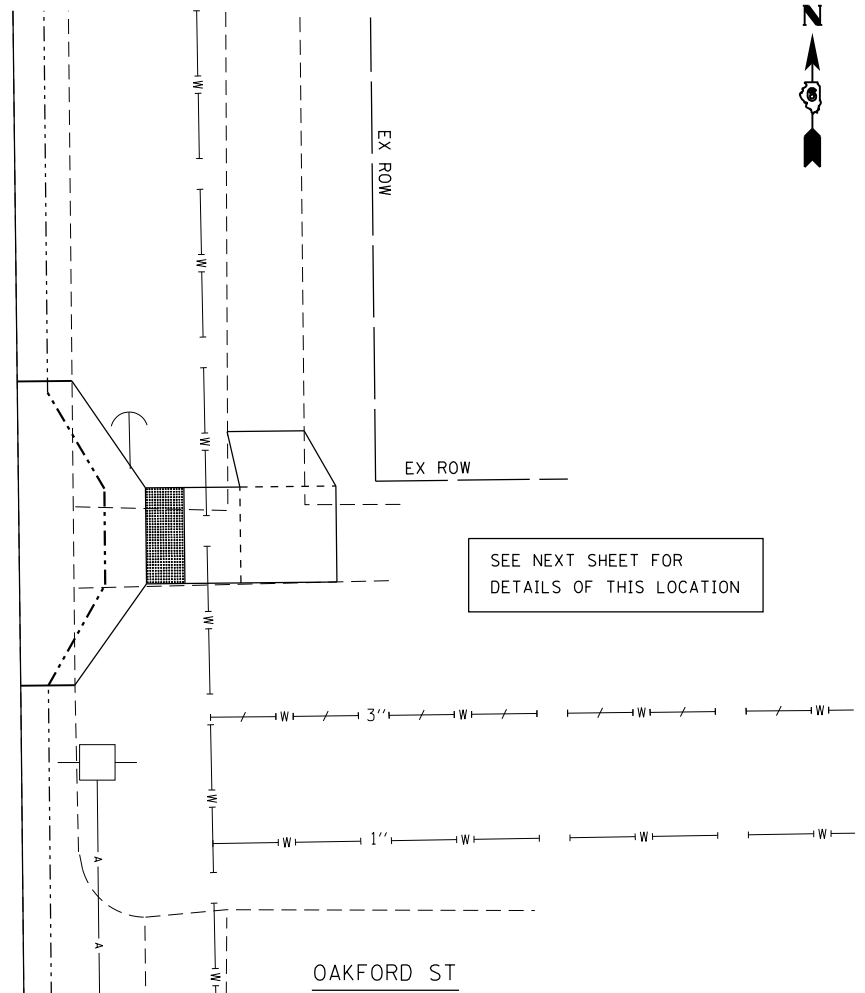
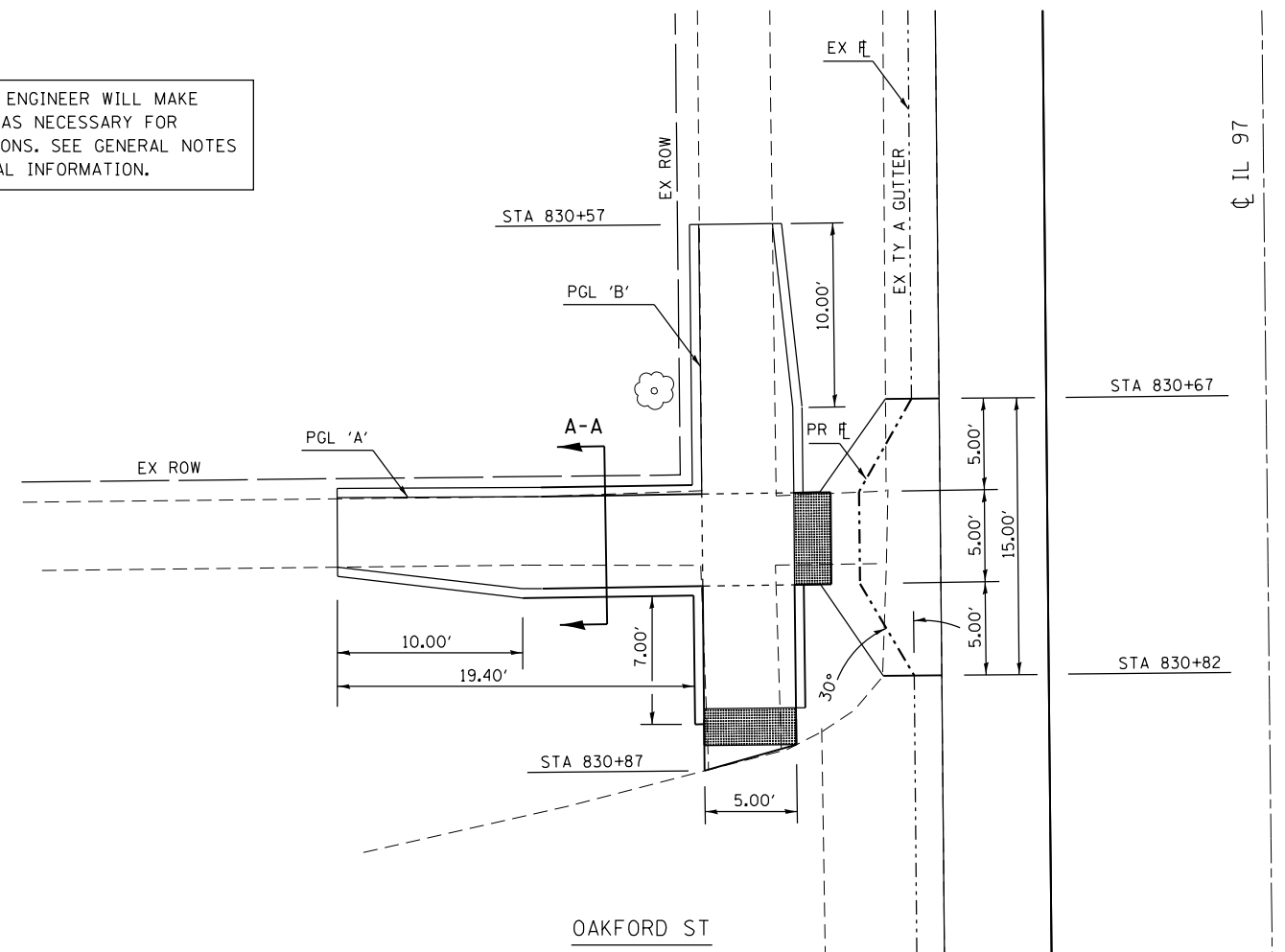


THE RESIDENT ENGINEER WILL MAKE ADJUSTMENTS AS NECESSARY FOR FIELD CONDITIONS. SEE GENERAL NOTES FOR ADDITIONAL INFORMATION.



SEE HIGHWAY STD 424001 & 606101 FOR ADDITIONAL INFORMATION

FILE NAME =	USER NAME = sparksgw	DESIGNED -	REVISED -
ct:\pwork\pwork\sparksgw\0313568\067771-sht-sw-detail.dgn		DRAWN -	REVISED -
Default	PLOT SCALE = 10.0000' / 1"	CHECKED -	REVISED -
	PLOT DATE = Jun-06-2014 02:14:47PM	DATE -	REVISED -

STATE OF ILLINOIS
DEPARTMENT OF TRANSPORTATION

HAND-CAP SIDEWALK RAMP DETAIL
FAP 34 (IL 97)
SCALE: 1" = 5'
SHEET 1 OF 2 SHEETS STA. TO STA.

F.A.P. RTE.	SECTION	COUNTY	TOTAL SHEETS	SHEET NO.
34	(2)RS-4,(3)RS-5	MENARD	45	43
CONTRACT NO. 72F 71			ILLINOIS FED. AID PROJECT	