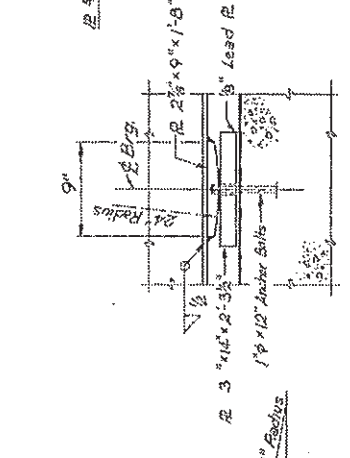
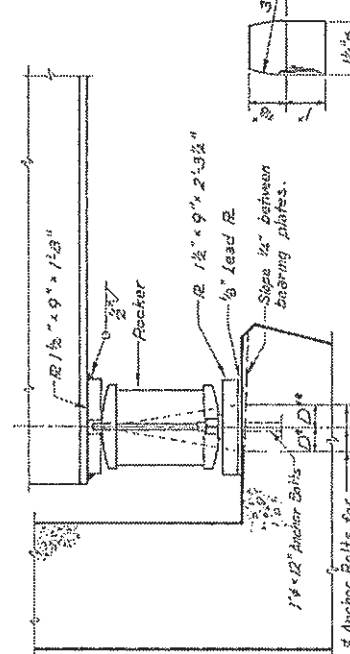


**ROCKER**

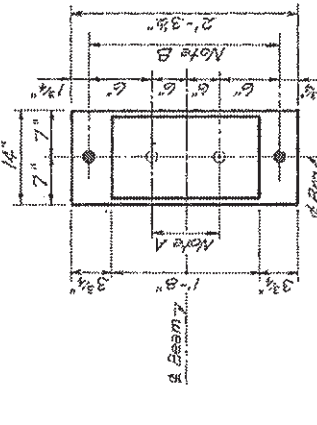


**SECTION**

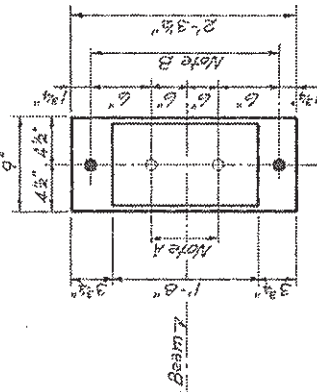


**SECTION**

Note A  
 1/2" holes - 1" deep in top flange for pintles. Thread or press fit pintles into bottom flange.  
 Note B  
 1/2" holes for 1" Anchor Bolts. 1/2" x 2 1/2" x 2 1/2" R washers under nut.



**PLAN AT PIER**



**PLAN AT ABUTMENTS**

**NOTES ON SETTING ANCHOR BOLTS AT EXPANSION BEARINGS**

- (Side of brg. away from fixed brg.)  
 $D = \frac{1}{8}$ " per each 100' of expansion for every 15° fall below the normal temperature of 50°F.  
 $D = \frac{1}{8}$ " (Side of brg. toward fixed brg.) every 15° rise above the normal temp. of 50°F.
- After beams have been erected and dimensions  $D^*$  and  $D^{**}$  determined, holes shall be drilled and anchor bolts shall be grouted in place. All fixed anchor bolts may be built into the masonry.

DESIGNED	M/M
CHECKED	F/M
DRAWN	M/M
CHECKED	M/M

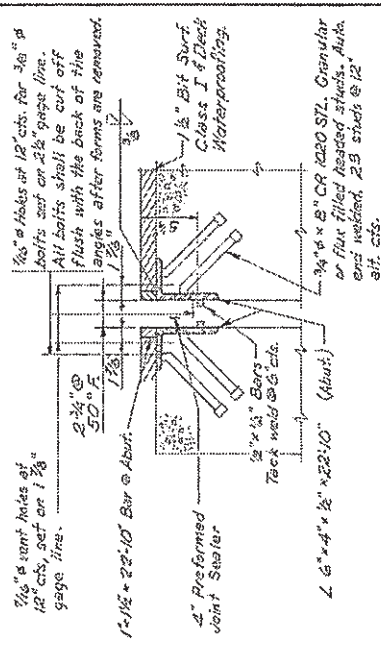
**MOMENT & SHEAR TABLE**

	0.4 Span 1	Pier	0.6 Span 2
$I_3$ (ft.)	22.968	37.697	21.584
$S_3$ (in <sup>3</sup> )	120.4	1978	1123
$D_L$ (ft.)	0.927	0.999	0.922
$M_{DL}$ (ft.-k)	7.55	16.81	6.28
$M_{UL}$ (ft.-k)	7.52	13.64	6.71
$V_3$ (in-30)	44.600	—	40.655
$S_c$ (in <sup>3</sup> )	19.35	—	1390
$M_{sc}$ (ft.-k)	327.3	440	284
$S_{sc}$ (in <sup>3</sup> )	2.33	3.57	2.22
$V_{sc}$ (in-30)	6.4380	—	5771.4
$M_{sc}$ (ft.-k)	16.83	767	913
$M_{sc}$ (ft.-k)	205	164	197
$M_{sc}$ (ft.-k)	1179	926	1112
$M_{sc}$ (ft.-k)	8.41	7.51	8.82
$V_{sc}$ (in-30)	16.3	24.7	17.75
$V_{sc}$	55.3	—	56.9

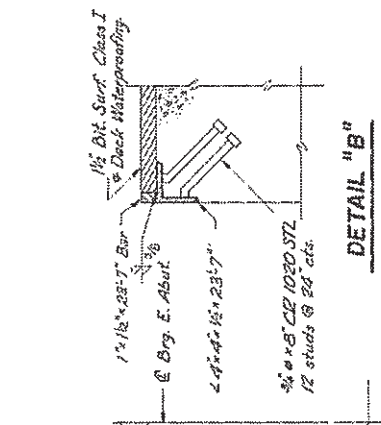
$I_3$  and  $S_3$  are the moment of inertia and section modulus at the steel section.  $I_c$  and  $S_c$  are the moment of inertia and section modulus of the composite section used in computing  $S_c$ .  
 $V_R$  is the maximum LL + impact shear range in a span.

**REACTION TABLE**

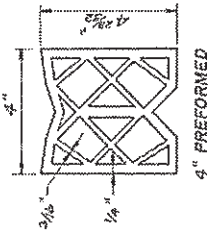
	Abutment	Pier
$R_{LL}$ (k)	60.8	209.1
$R_{UL}$ (k)	47.6	75.3
$M_{sc}$ (k)	10.1	16.5
$R_{total}$ (k)	118.5	303.9



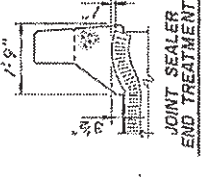
**DETAIL "A"**



**DETAIL "B"**

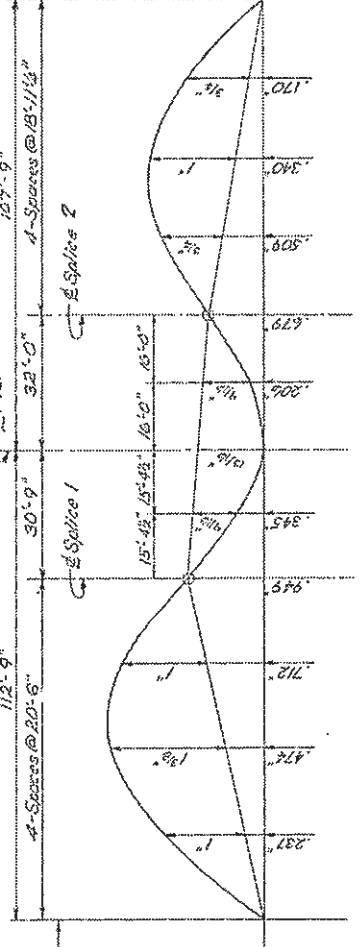


**4" PREFORMED JOINT SEALER**



**JOINT SEALER END TREATMENT**

**BEARING DETAILS**  
 FAR RTE. 407 - SEC. 1-5HB  
 ADAMS COUNTY  
 STATION 56 + 09.43



**CAMBER DIAGRAM**

**TOP OF WEB ELEVATIONS \***

	Girder 1	Girder 2	Girder 3	Girder 4	Girder 5	Girder 6	Girder 7	Girder 8	Girder 9
Br. W. Abut.	543.018	545.202	545.324	545.247	545.568	545.465	545.361	545.257	545.122
Splice 1	544.024	544.175	544.298	544.421	544.545	544.441	544.338	544.235	544.100
Pier	543.530	543.684	543.810	543.931	544.055	543.952	543.849	543.746	543.611
Splice 2	543.113	543.268	543.392	543.516	543.640	543.537	543.434	543.331	543.197
Br. E. Abut.	541.927	542.083	542.208	542.333	542.458	542.355	542.252	542.150	542.017

\* For Fabrication Only