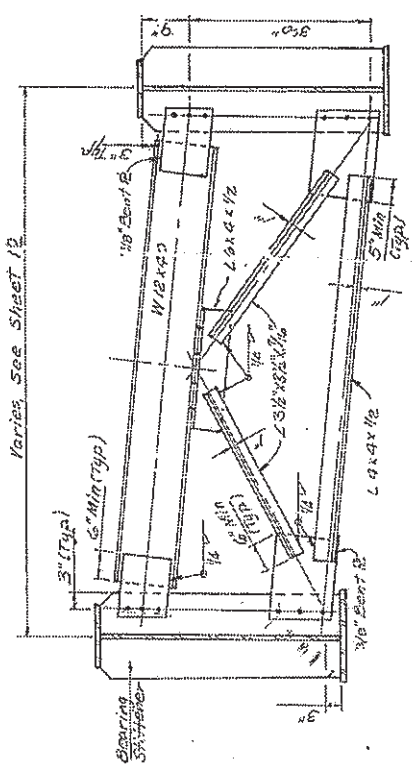
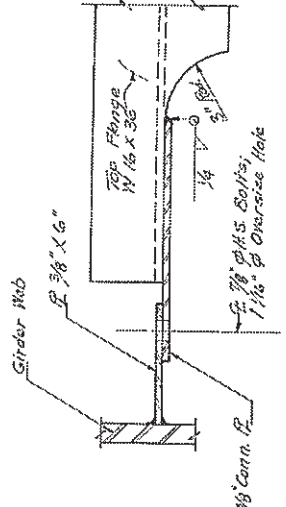


STATE OF ILLINOIS  
DEPARTMENT OF TRANSPORTATION

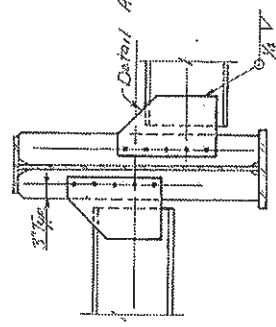
DATE	BY	CHKD	REV
11-18-11	ADAMS	ST	31
SHEET NO. 15 27 SHEETS			



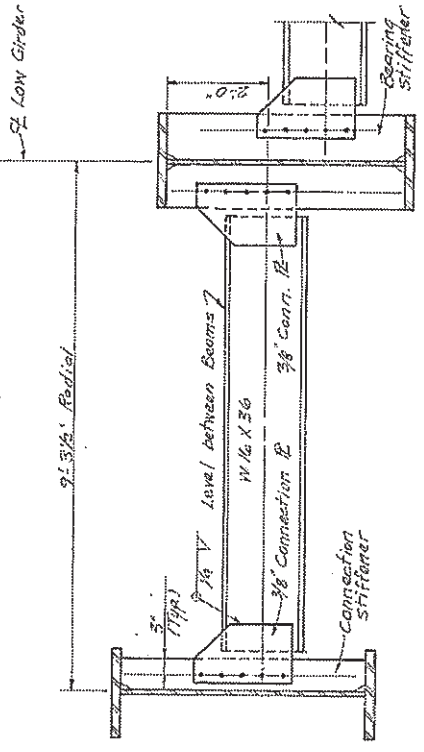
**END DIAPHRAGM**  
(EOI thru EO16)



DETAIL A



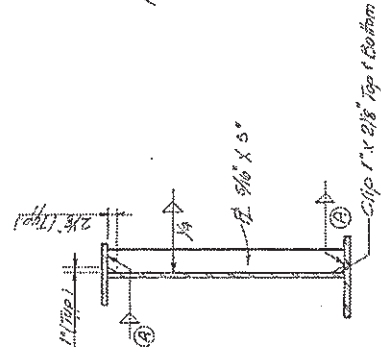
AT INTERIOR BEAM



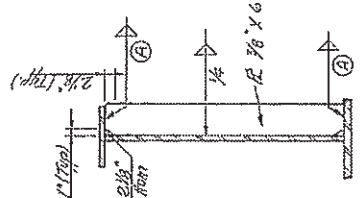
AT FASCIA BEAM

AT PIER

**INTERIOR DIAPHRAGM**  
DIM 1 FROM 2

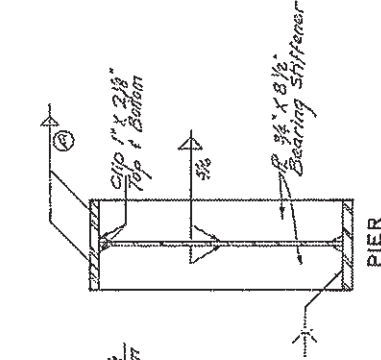


INTERMEDIATE STIFFENER

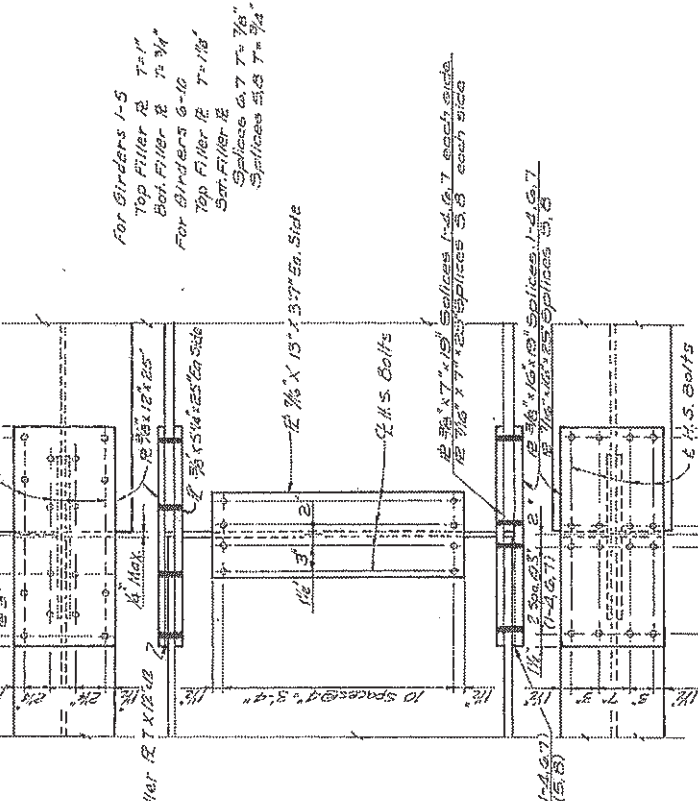


DIAPHRAGM CONNECTION PLATE

Use 7/8" dia H.S. Bolts for all diaphragm connections.  
Provide 1/16" over-size holes in connection plates and stiffeners.



BEARING STIFFENERS



**SPICE DETAILS**

1. All bolts are 7/8" dia High Strength  
2. All splice plates shall meet  
Deck roughness requirements (A.R.R.)

FILLET WELDS	
Flange Thick.	Weld Size
3/4"	1/4"
1/2"	5/16"
3/8"	3/8"
1/8"	5/8"

DESIGNED	JHN
CHECKED	MYM
DRAWN	BSB
CHECKED	MYM

For Girders 1-5  
Top Filler Pl. 7-1/4"  
Bot Filler Pl. 7-3/4"  
For Girders 6-10  
Top Filler Pl. 7-1/8"  
Bot Filler Pl. 7-1/8"  
Splices on 7-7/8"  
Splices on 5-7/8"

STEEL DETAILS  
F.A. RTE. 408 SEC. 1-4B-1  
ADAMS COUNTY  
STA. 181+30.00 F.A. 408