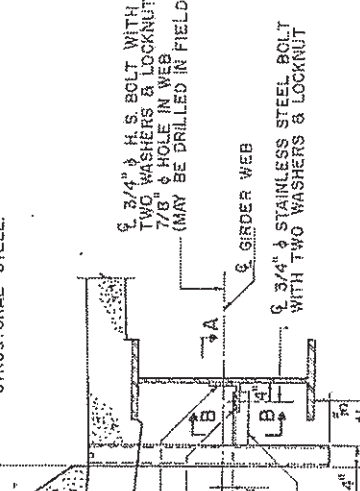
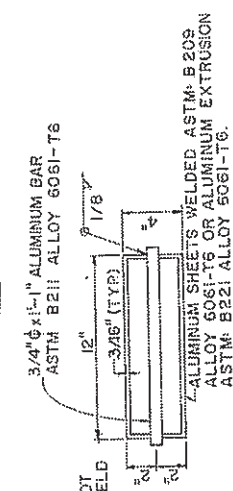


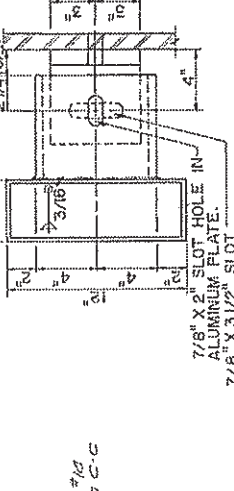
NOTE:
THE EXTERIOR SURFACES OF THE ALUMINUM DRAINS SHALL BE CLEANED AND GIVEN A WASHCOAT PRETREATMENT IN ACCORDANCE WITH THE STEEL STRUCTURE PAINTING COUNCIL'S SPECIFICATIONS SSPC-SP1 AND SSPC-PT3 FOLLOWED BY THE BASIC LEAD SILICO CHROMATE PAINTING SPECIFIED FOR STRUCTURAL STEEL.



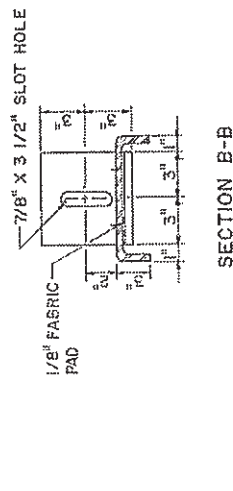
SECTION AT PARAPET



TOP PLAN

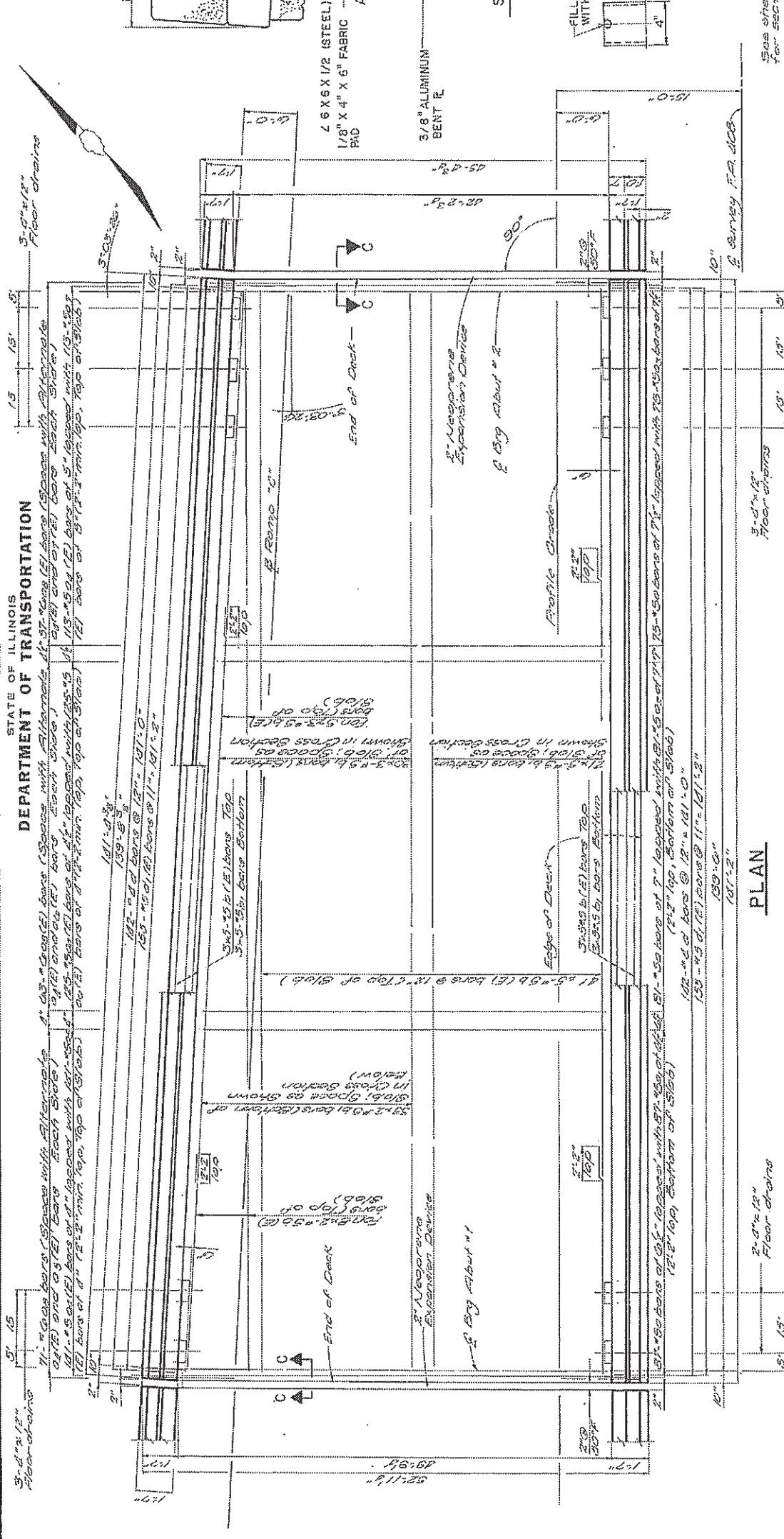


SECTION A-A

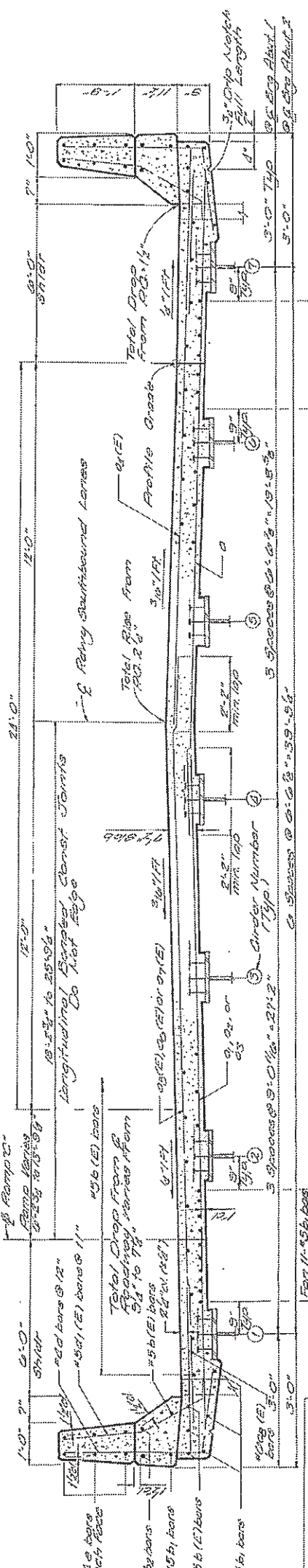


SECTION B-B

SOUTHBOUND.
SUPERSTRUCTURE
FA. RTE. 408 SEC. 1-3HB
ADAMS COUNTY
STA. 120+50.00 FA 408



PLAN



CROSS SECTION
(LOOKING UP STATION)

DESIGNED	RLO
CHECKED	MVM
DRAWN	RLO
CHECKED	MVM