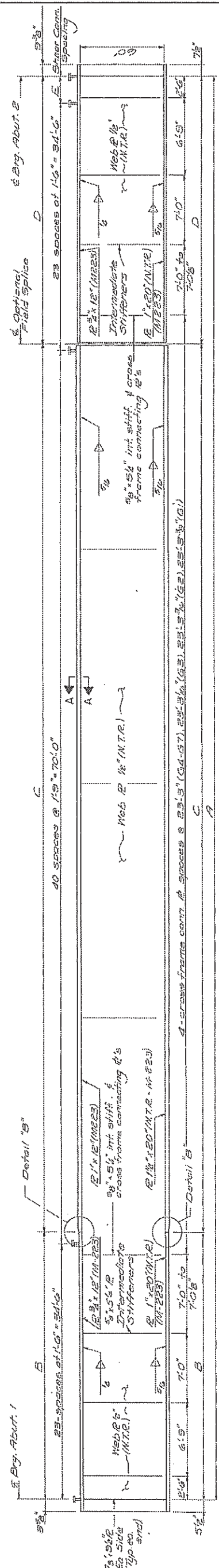


STATE OF ILLINOIS
DEPARTMENT OF TRANSPORTATION

SHEET NO. 17
SHEETS 23

DATE	ISSUED	BY	SCALE
11/10/00	11/10/00	ADAMS	1/8" = 1'-0"
11/10/00	11/10/00	ADAMS	1/8" = 1'-0"
11/10/00	11/10/00	ADAMS	1/8" = 1'-0"

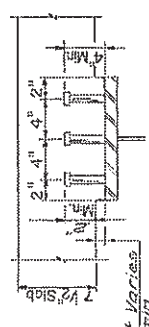
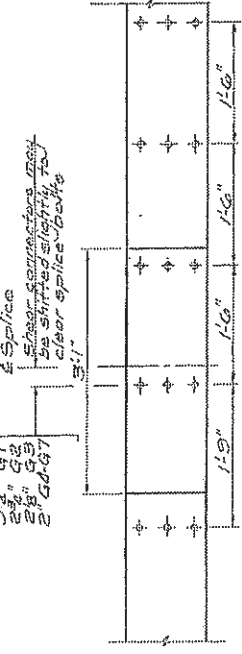
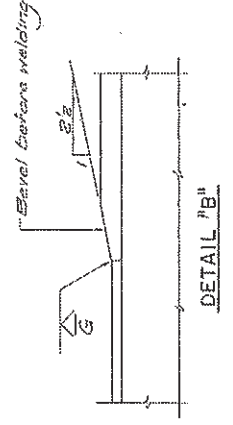


GIRDER ELEVATION

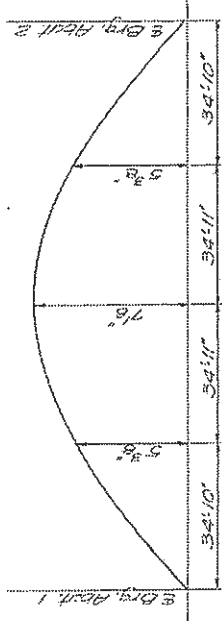
NOTE: All dimensions are measured along E of girder.
N.T.R. denotes Notch Toughness Requirements are applicable.
Work this sheet with sheets 16, 19 & 20.
All flange plates, end splice plates as shown on sheets 16, 19 & 20 shall be AASHTO M-183.

GIRDER DIMENSIONS						
	A	B	C	D	E	F
1	159.17	34.10	68.10	34.10	68.10	6.0
2	159.17	34.10	68.10	34.10	68.10	6.0
3	159.17	34.10	68.10	34.10	68.10	6.0
4	159.17	34.10	68.10	34.10	68.10	6.0
5	159.17	34.10	68.10	34.10	68.10	6.0
6	159.17	34.10	68.10	34.10	68.10	6.0
7	159.17	34.10	68.10	34.10	68.10	6.0

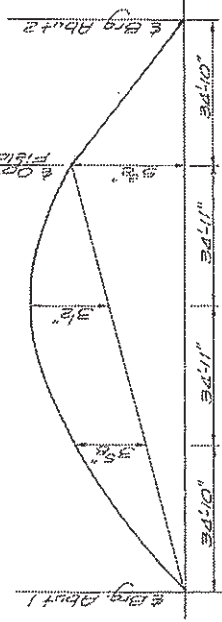
TOP OF WEB ELEVATIONS (For Fabrication Only)						
	1	2	3	4	5	6
1	517.65	517.65	517.65	517.65	517.65	517.65
2	521.54	521.54	521.54	521.54	521.54	521.54
3	521.97	521.97	521.97	521.97	521.97	521.97



3/4" ϕ Grommet or Solid Flex Filled Headed Studs Automatically End Welded to Flange. (No. Required = 1927, Girders 1-7)



CAMBER DIAGRAM
(STEEL AND DECK DEAD LOADS)
(WITHOUT OPTIONAL FIELD SPLICE)



CAMBER DIAGRAM
(WITH OPTIONAL FIELD SPLICE)

INTERIOR GIRDER MOMENT TABLE	
	0.25 SPAN 0.5 SPAN 0.75 SPAN
Is (in ⁴)	39990
S _{xx} (in ³)	1847
DL (ft-k)	9.4
MDL (ft-k)	22.9
FSB DL (ft-k)	20.1
Is (in ⁴)	7012
S _{xx} (in ³)	222
SDI (ft-k)	222
MSDL (ft-k)	47.2
FSB SDI (ft-k)	47.2
S _{xx} (in ³)	1070
M.L. (ft-k)	24.3
MIMP (ft-k)	55.9
MULTOTAL (ft-k)	40.8
FSB LL (ft-k)	20.2
FSB TOTAL (ft-k)	47.5
VR (k)	67.2

REACTION TABLE	
REACTION	ABUT. 1
RDL (k)	26.9
RLI (k)	27.5
RIMP (k)	7.0
R TOTAL (k)	156.5

GIRDERS 1-7
STRUCTURAL STEEL
F.A. RTE. 408 SEC. 1-3HB
ADAMS COUNTY
STA. 120+50.00 F.A. 408