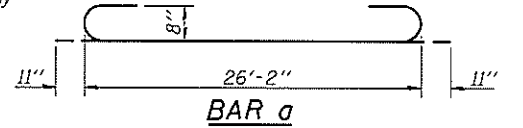
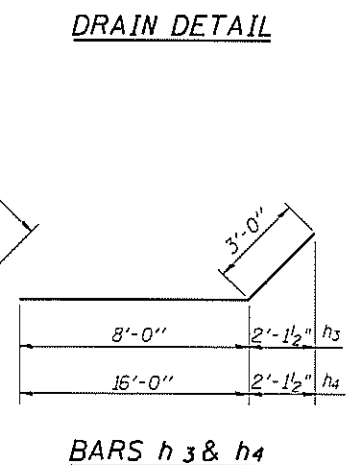
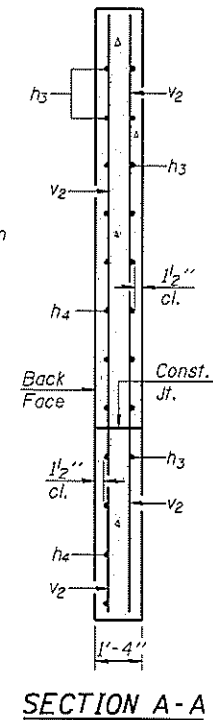


BILL OF MATERIAL

Bar	No.	Size	Length	Shape
a	144	#8	28'-0"	U
a1	144	#8	13'-0"	—
a2	72	#5	8'-9"	—
d	50	#4	4'-6"	L
h	31	#6	23'-9"	—
h1	31	#6	29'-9"	—
h2	6	#8	26'-2"	—
h3	92	#9	11'-0"	—
h4	56	#9	19'-0"	—
h5	6	#6	26'-2"	—
h6	30	#7	23'-9"	—
h7	30	#7	29'-9"	—
h8	27	#4	23'-9"	—
h9	27	#4	29'-9"	—
h10	54	#5	23'-9"	—
h11	54	#5	29'-9"	—
v	232	#5	10'-3"	—
v1	232	#5	2'-8"	—
v2	20	#4	14'-5"	—
s	50	#4	4'-5"	□
s1	25	#4	4'-3"	□
Concrete Box Culverts			Cu. Yd.	198.5
Reinforcement Bars			Pound	37580



**CULVERT DETAILS
STRUCTURE NO. 070-2018**

Sheet 3 of 7	F.A.P. RTE.	SECTION	COUNTY	TOTAL SHEETS	SHEET NO.
	323	(142BY)BR	MOULTRIE	35	26
CONTRACT NO. 74165					
FED. ROAD DIST. NO. 7 ILLINOIS FED. AID PROJECT					

DB-H-0 10-1-08

CEC Cummins Engineering Corporation
Civil and Structural Engineering

JOB = 2223.1	DESIGNED A.A.H. & T.S.H.
FILE = 0702018-74165-003-culvert.dgn	CHECKED M.D.C.
DATE = 8/11/2014	DRAWN T.S.H.
	CHECKED M.D.C.

Notes: A minimum distance of 8 feet of the barrel shall be poured monolithically with the wingwalls.