



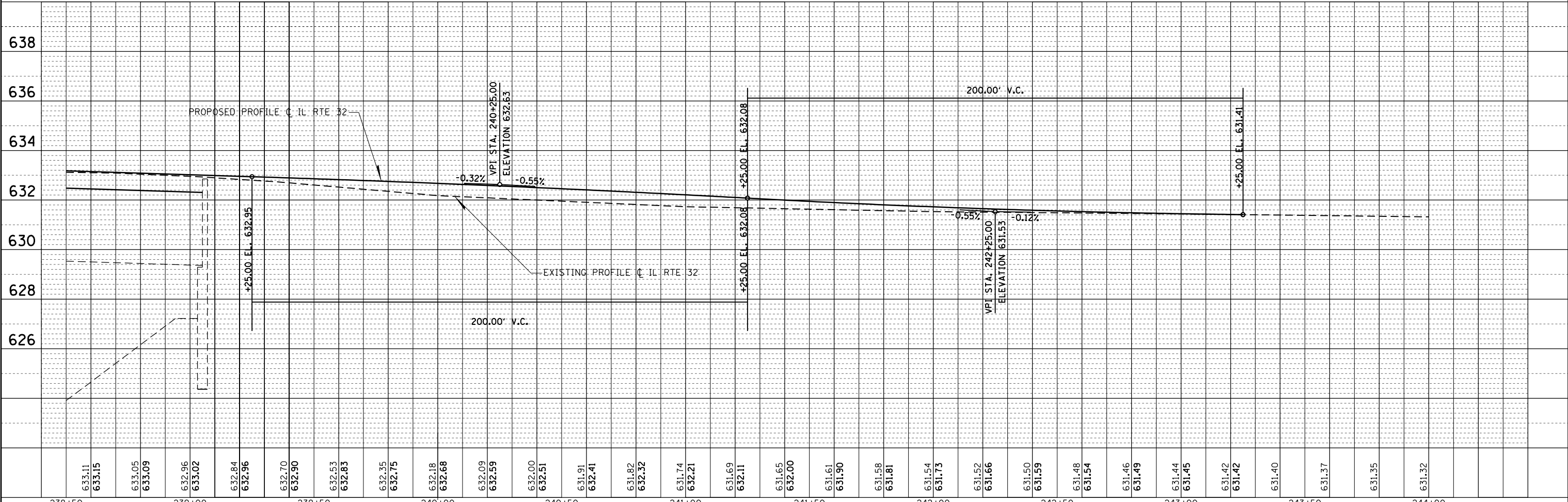
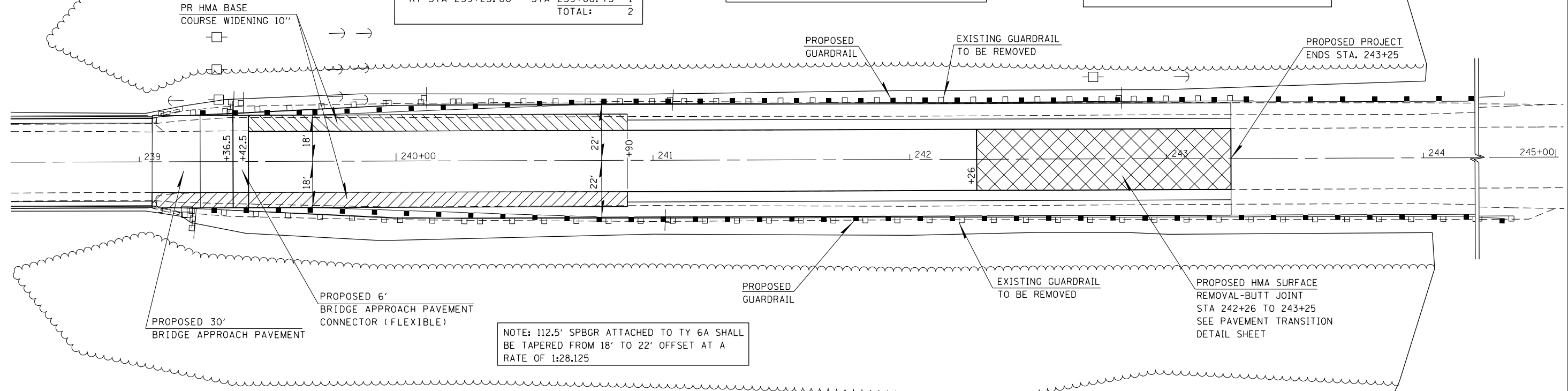
SOUTH END OF BRIDGE TRAFFIC BARRIER TERMINAL TYPE 6A		
LT STA 239+25.00 - STA 239+68.75	1	
RT STA 239+25.00 - STA 239+68.75	1	
<b>TOTAL:</b>	<b>2</b>	

SOUTH END OF BRIDGE STEEL PLATE BEAM GUARDRAIL		
RT STA 239+68.75 - STA 244+31.25	462.5'	
LT STA 239+68.75 - STA 244+31.25	462.5'	
<b>TOTAL:</b>	<b>925'</b>	

SOUTH END OF BRIDGE TRAFFIC BARRIER TERMINAL, TYPE 1 SPL		
LT STA 244+31.25 - STA 244+81.25	1	
RT STA 244+31.25 - STA 244+81.25	1	
<b>TOTAL:</b>	<b>2</b>	

PLAN	SURVEYED	DATE
	PLOTTED	BY
	ALIGNED	
	CHECKED	
	FILED	
NOTE BOOK NO.	CARD FILE NAME	

PROFILE	SURVEYED	DATE
	PLOTTED	BY
	GRADES CHECKED	
	STRUCTURE NOTATIONS CHECKED	
NOTE BOOK NO.		



FILE NAME =	USER NAME = steffenk	DESIGNED -	REVISED -	<b>STATE OF ILLINOIS DEPARTMENT OF TRANSPORTATION</b>	<b>SN 070-0015 PLAN &amp; PROFILE</b>	F.A.P. RTE.	SECTION	COUNTY	TOTAL SHEETS	SHEET NO.	
c:\pwork\pwork\steffenk\d0234885\077357-sht-plan.dgn	PLOT SCALE = 40.0000' / in.	DRAWN -	REVISED -			762	(2BR)BR-1	Moultrie	48	13	
Default	PLOT DATE = 8/15/2014	CHECKED -	REVISED -			CONTRACT NO. 74357					
		DATE -	REVISED -			ILLINOIS FED. AID PROJECT					