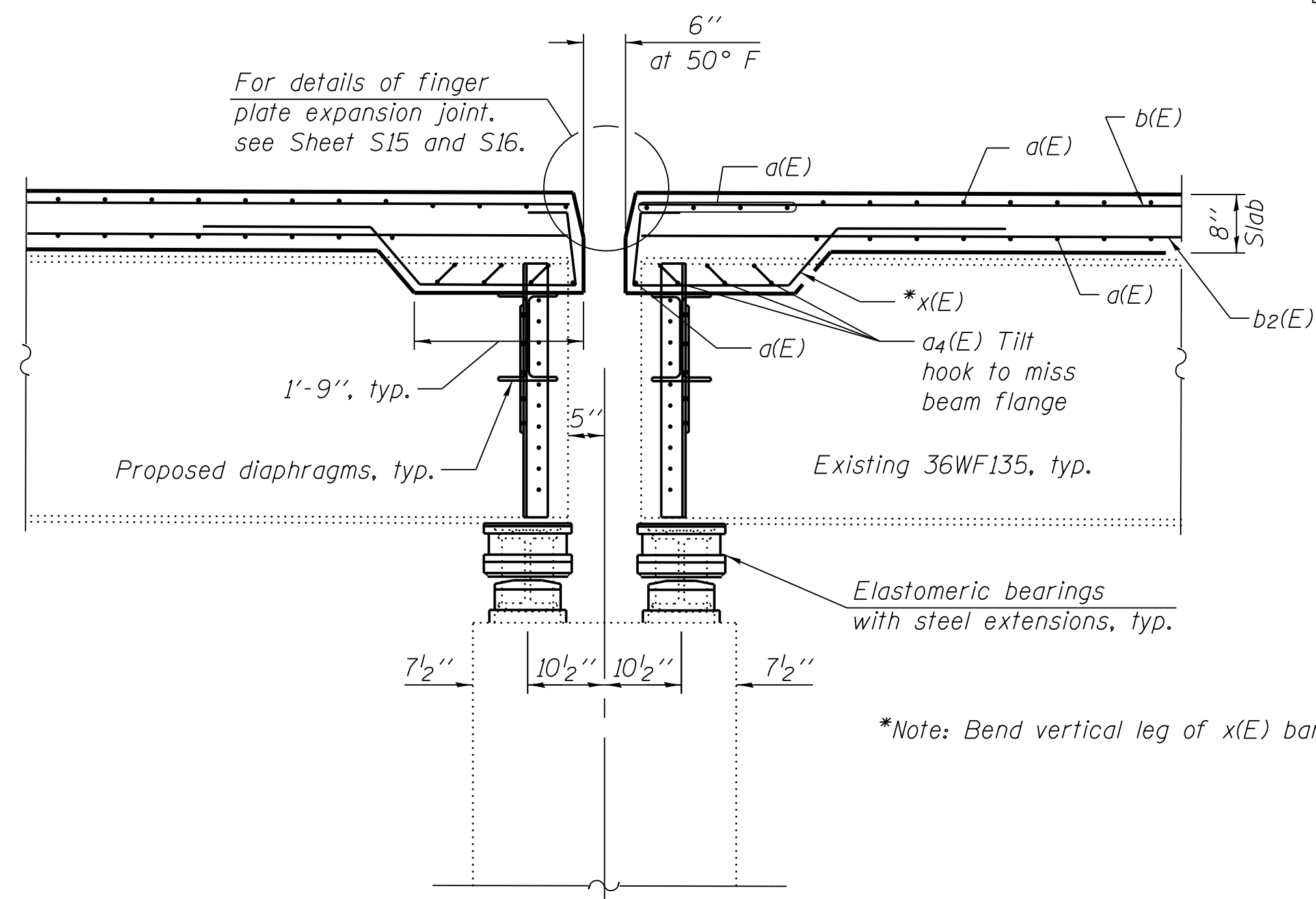


Note:  
Dimensions shown are along edge of bridge deck.  
For details of steel railing, see Sheet S13.

**BRIDGE RAILING ELEVATION**  
(Looking toward bridge)

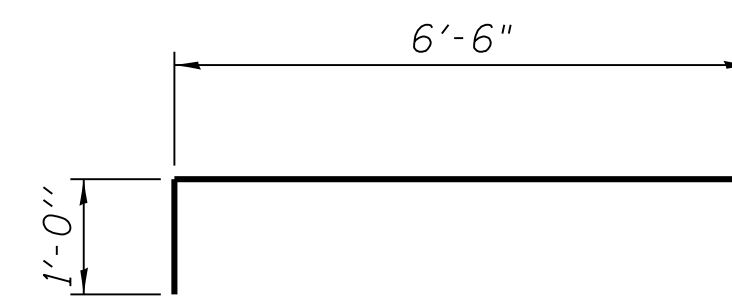
**TWO SUPERSTRUCTURE UNITS**  
**BILL OF MATERIAL**

Bar	No.	Size	Length	Shape
a(E)	3484	#5	17'-8"	—
a <sub>2</sub> (E)	972	#6	7'-6"	—
a <sub>3</sub> (E)	1548	#5	3'-10"	—
a <sub>4</sub> (E)	48	#5	7'-4"	—
b(E)	836	#5	31'-8"	—
b <sub>1</sub> (E)	216	#6	49'-0"	—
b <sub>2</sub> (E)	760	#5	34'-7"	—
x(E)	152	#5	6'-5"	—
Reinforcement Bars, Epoxy Coated			Pound	153,640
Concrete Superstructure			Cu. Yd.	648.4

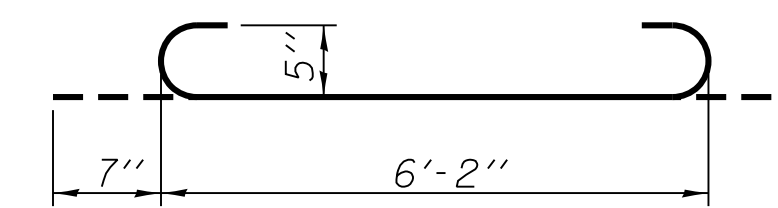


**SECTION B-B**

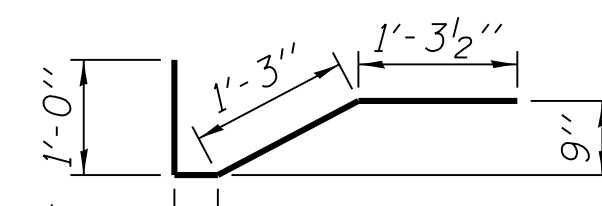
\*Note: Bend vertical leg of x(E) bar to fit.



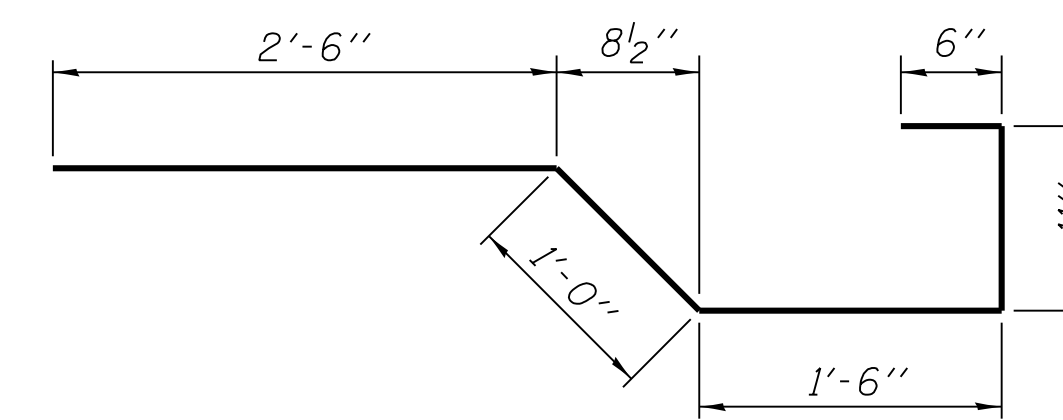
**a<sub>2</sub>(E) BAR**



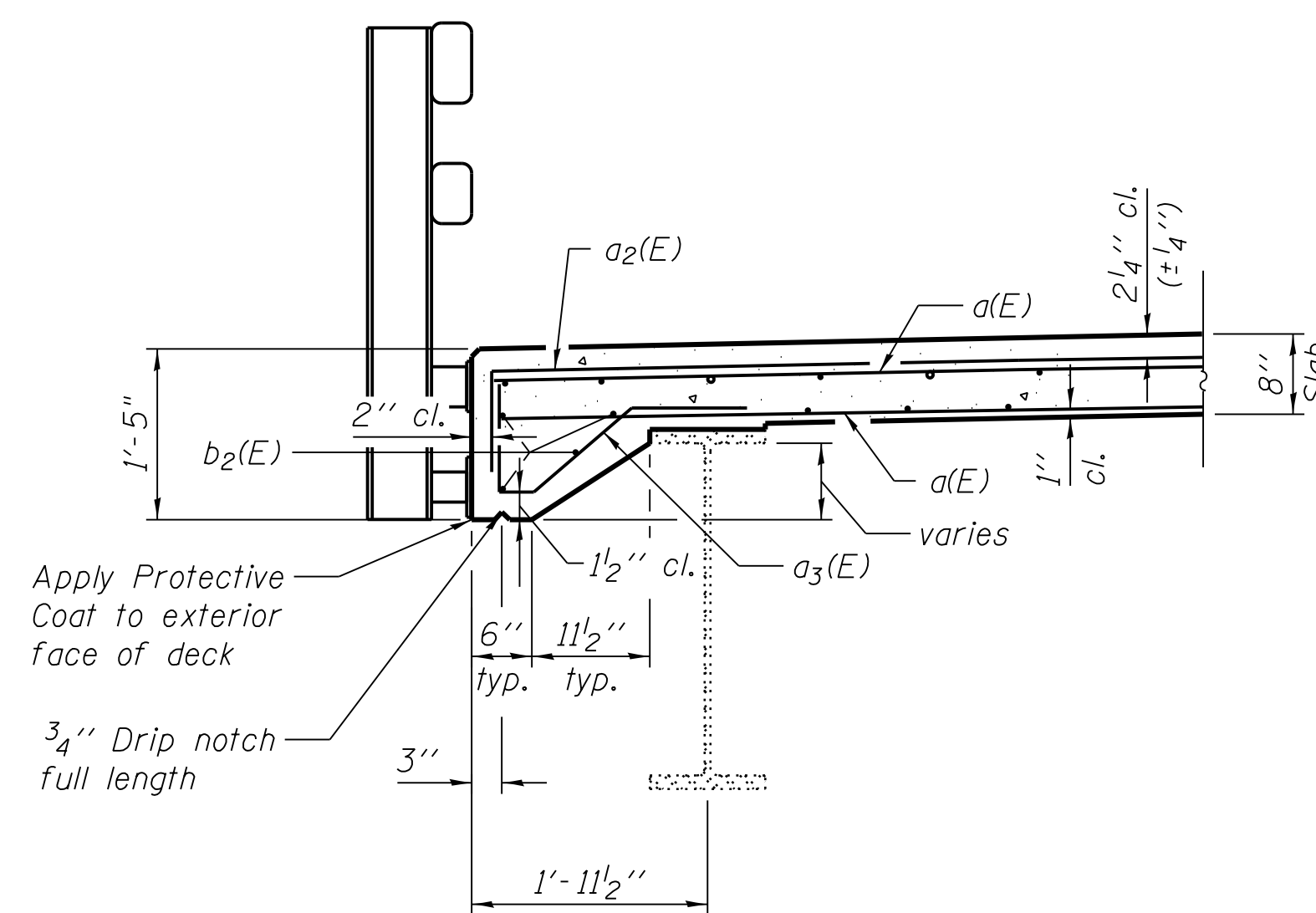
**a<sub>4</sub>(E) BAR**



**a<sub>3</sub>(E) BAR**

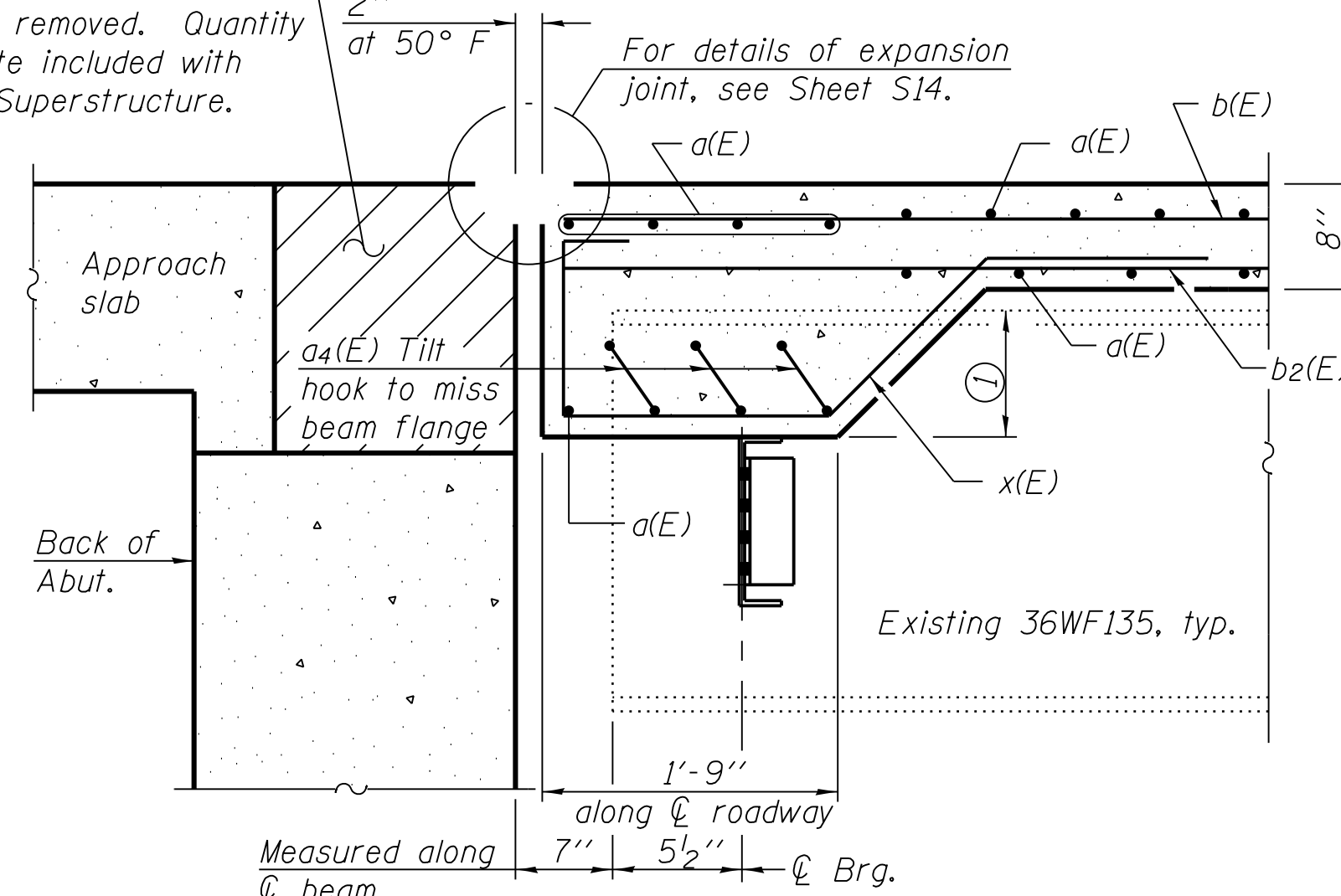


**x(E) BAR**



**SECTION THRU EDGE OF DECK**

Hatched area to be poured after superstructure forms have been removed. Quantity of concrete included with Concrete Superstructure.



**SECTION A-A**

Notation:  
① 5" at Beam 1 and 6. Diaphragm is level across width of bridge.

FILE NAME = V:\1736\active\173630009\_1\DOT\_IL\_32\_cover\_LakeShelby\11a\structural\drawing\0700015\_74357\_012\_Deck\_Details.rvt



USER NAME = jerojas	DESIGNED - JSR	REVISED -
PLOT SCALE = N/A	CHECKED - BHS	REVISED -
PLOT DATE = 9/16/2014	DRAWN - MJB	REVISED -
	CHECKED - BPS	REVISED -

**STATE OF ILLINOIS**  
**DEPARTMENT OF TRANSPORTATION**

**DECK DETAILS**  
**STRUCTURE NO. 070-0015**

SHEET NO. S12 OF 28 SHEETS

F.A.P. RTE.	SECTION	COUNTY	TOTAL SHEETS	SHEET NO.
762	(2BR)BR-1	MOULTRIE	48	32
CONTRACT NO. 74357				

ILLINOIS FED. AID PROJECT