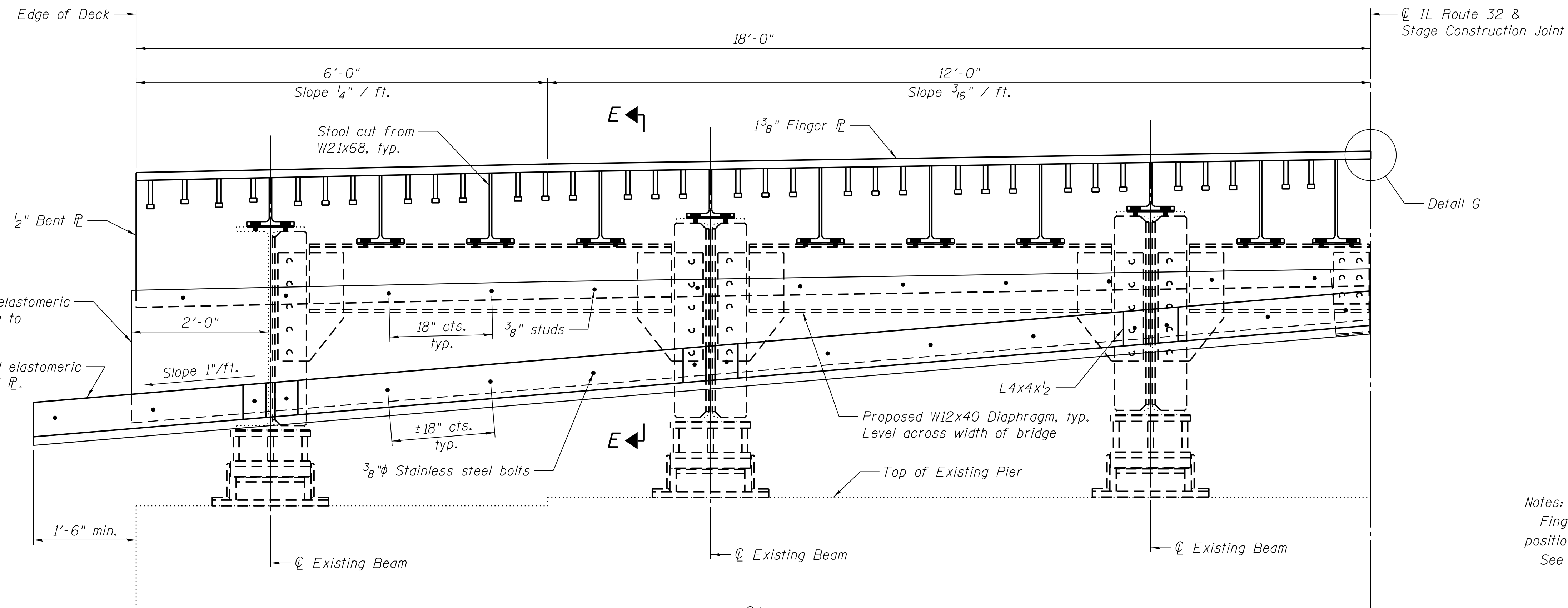


PARTIAL PLAN OF FINGER PLATE
(joint symmetric about CL IL Route 32)



PARTIAL ELEVATION OF FINGER PLATE
(joint symmetric about CL IL Route 32)

Notes:
Finger plate expansion joint shall be assembled in its final relative position with the ends in place for shop inspection and acceptance.
See Sheet S16 for Section E-E and Detail G

FILE NAME = \\N1736\active\1736\0009\1.DOT_IL_32_cover_LakeShelby\11a\structural\Ndr\dwg_0700015_74357_015_Finger1.dgn

	USER NAME = jerojas	DESIGNED - JSR	REVISIONS	STATE OF ILLINOIS DEPARTMENT OF TRANSPORTATION	FINGER PLATE EXPANSION JOINT STRUCTURE NO. 070-0015	F.A.P. RTE. = 762	SECTION = (2BR)BR-1	COUNTY = MOULTRIE	TOTAL SHEETS = 48	SHEET NO. = 35
	PLOT SCALE = N/A	DRAWN - MJB	REVISIONS			CONTRACT NO. 74357				
	PLOT DATE = 9/16/2014	CHECKED - BPS	REVISIONS			ILLINOIS FED. AID PROJECT				