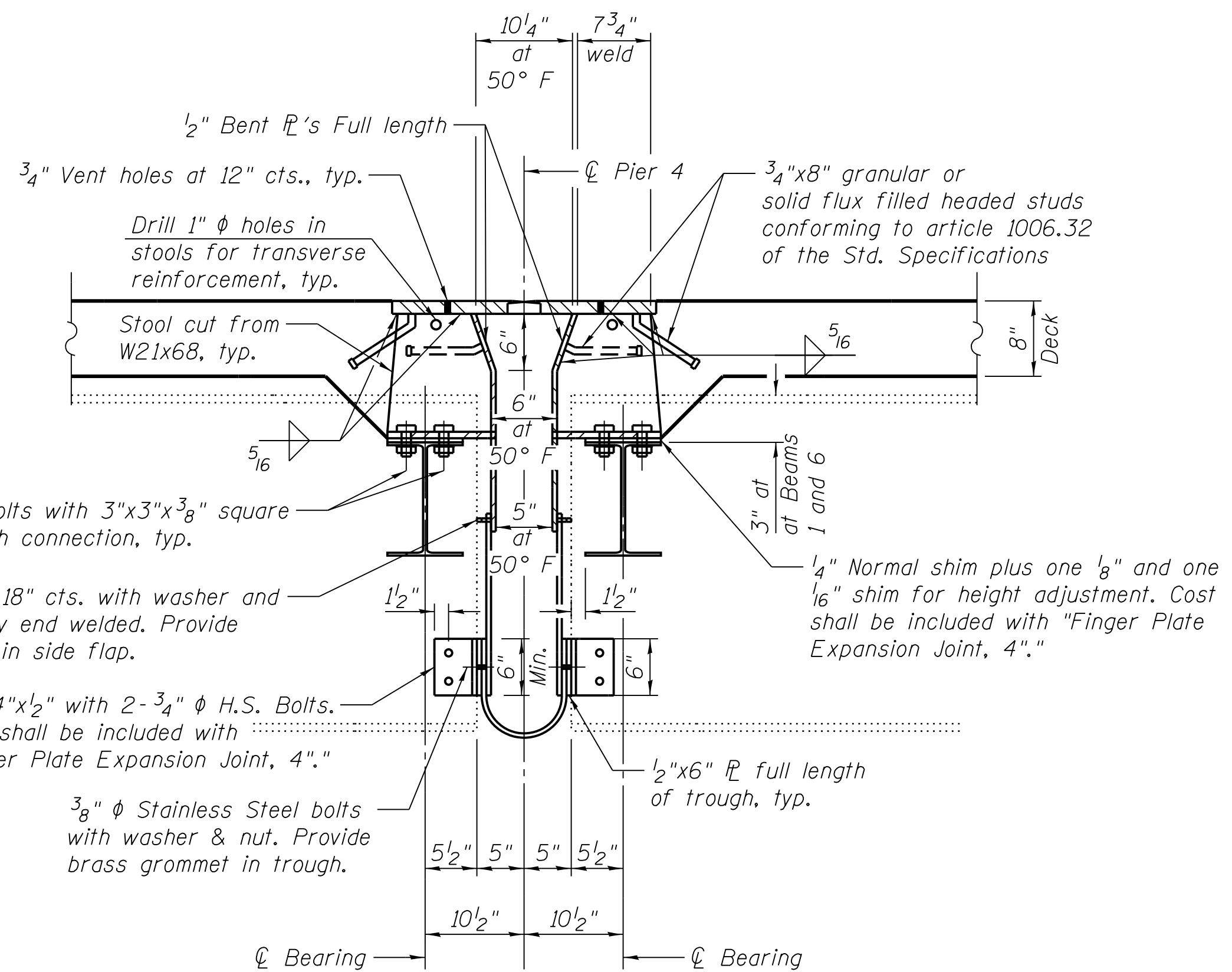
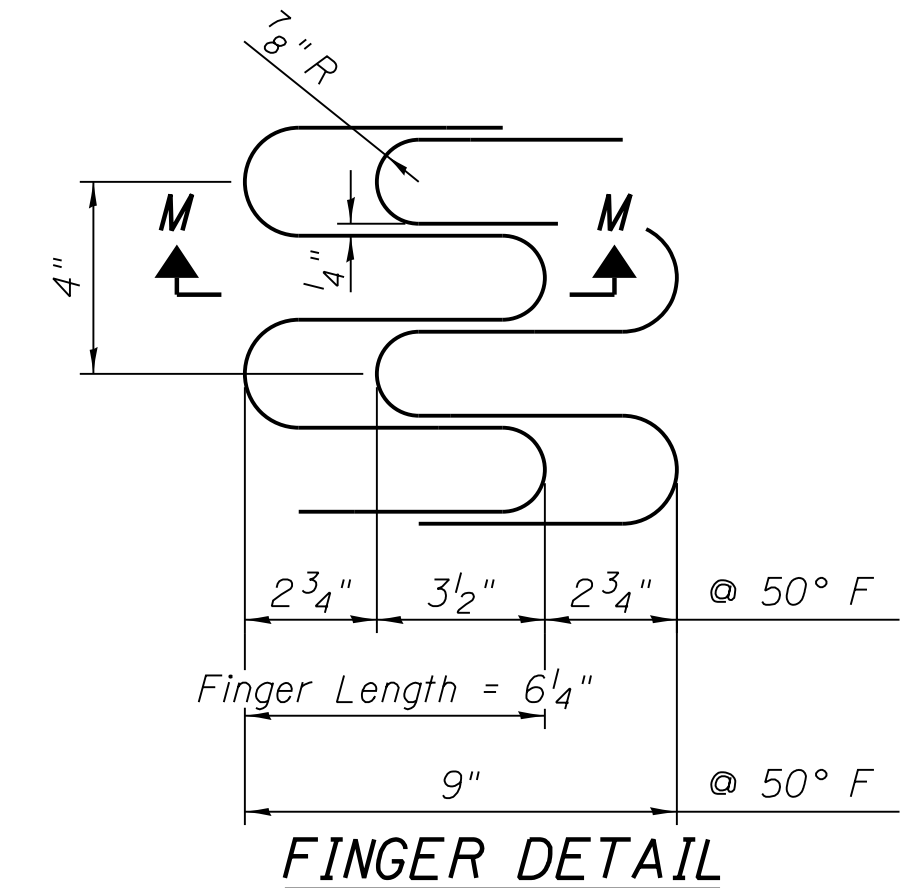


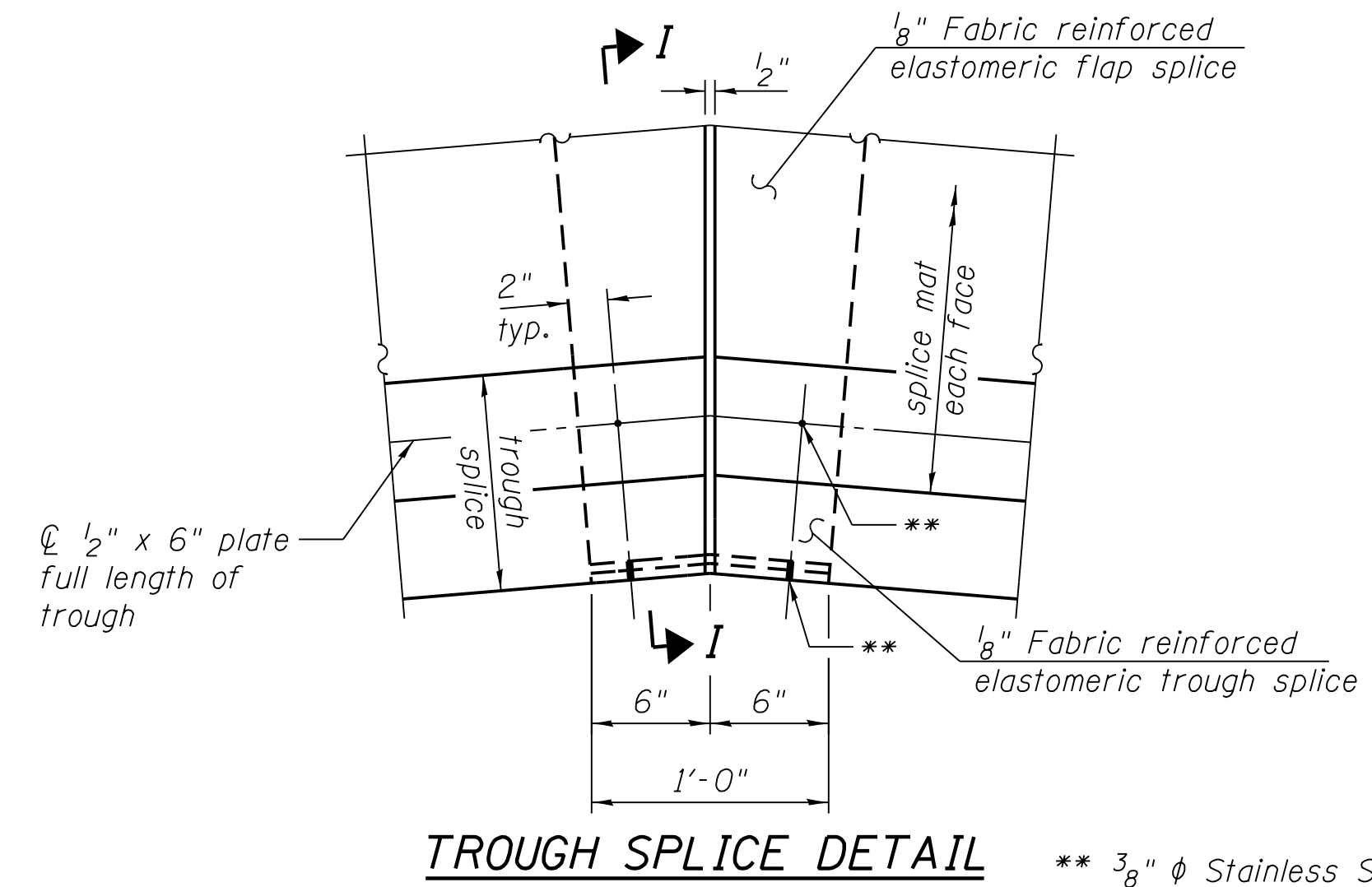
FILE NAME = N:\1736\active\173630009_1\DOT_IL32\over_LakeShelby\11a\structural\drawing\0700015_74357_016_Finger.dwg



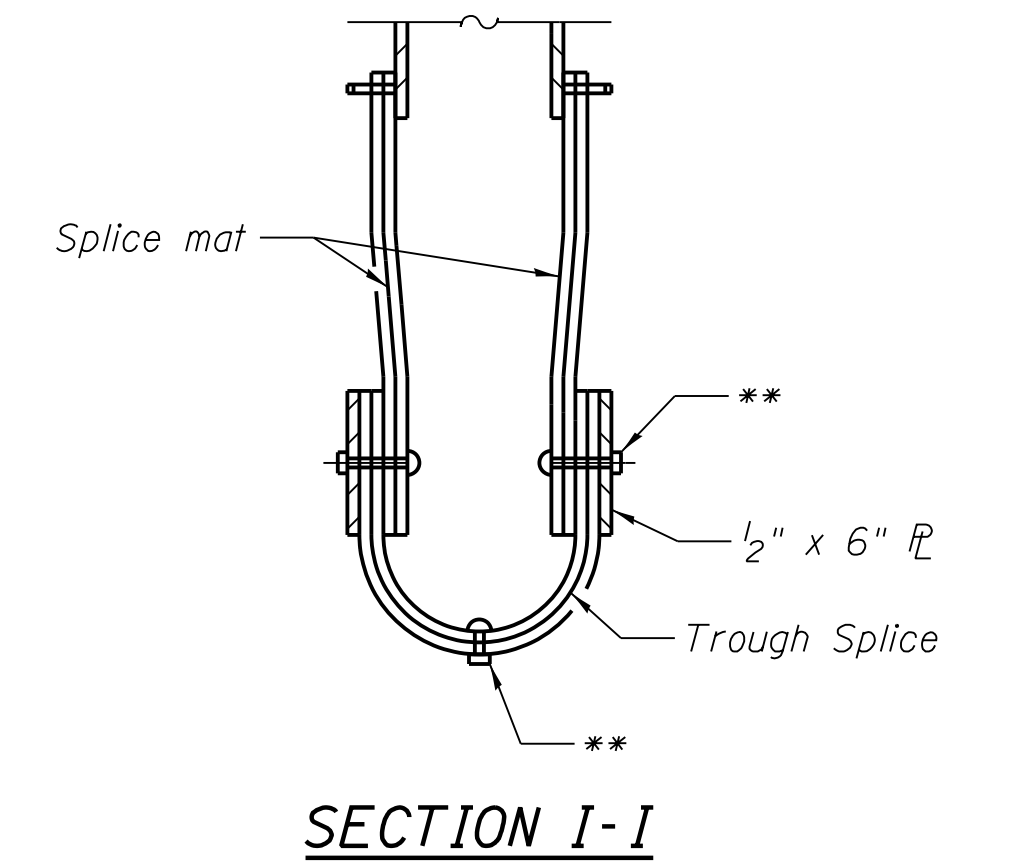
SECTION E-E



FINGER DETAIL

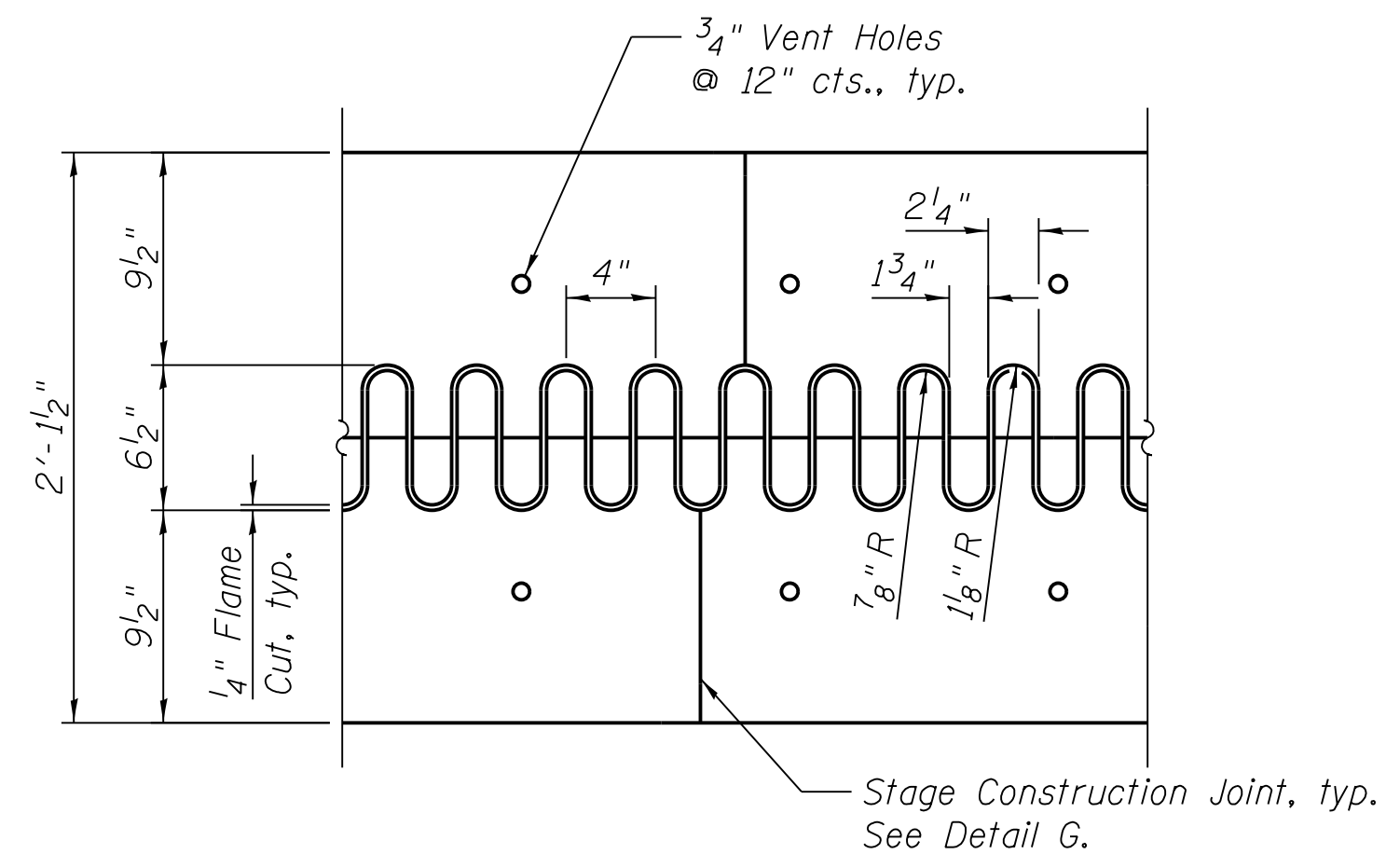


TROUGH SPLICE DETAIL



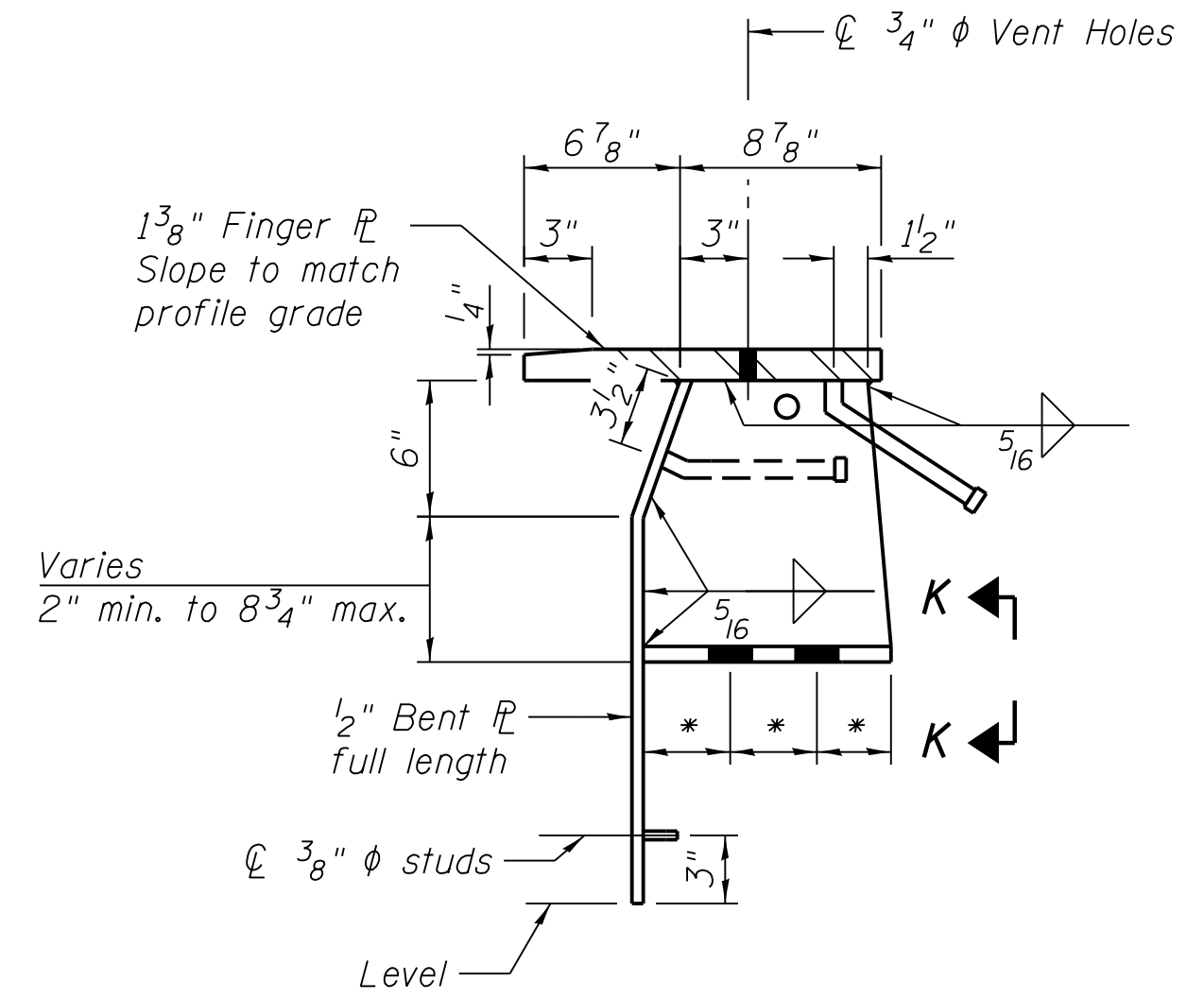
SECTION I-I

** 3/8" φ Stainless Steel bolts with washers & nuts. Provide brass grommet in trough.



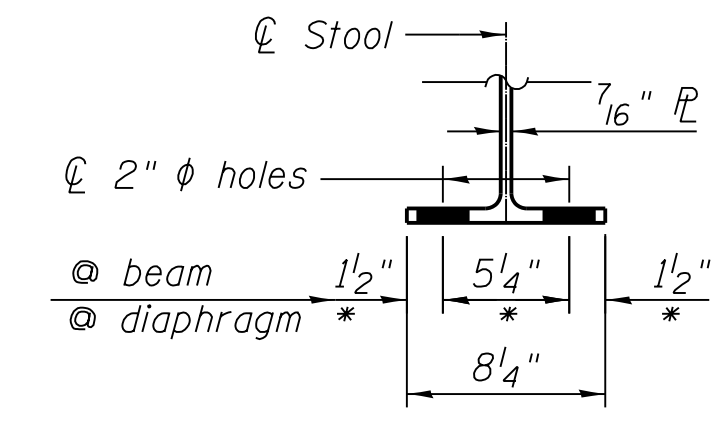
FLAME CUTTING DIAGRAM

Cut from F 1 3/8" x 2'-1 1/2" x 36'-0" (M270 Grade 50)

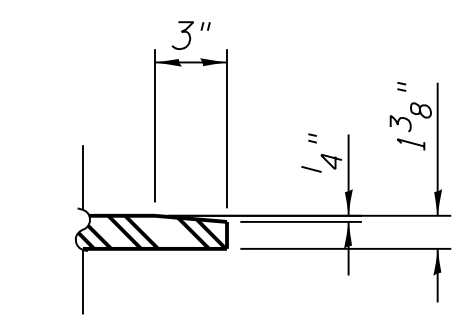


STOOL DETAIL

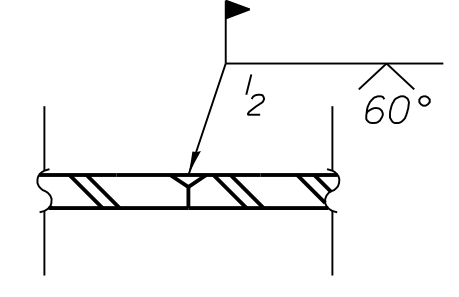
* Holes to be spaced to miss stiffeners on beam mounted stools.



VIEW K-K



SECTION M-M



DETAIL G

Stage Construction Joint

BILL OF MATERIAL

Item	Unit	Total
Finger Plate Expansion Joint, 4"	Foot	36.0
Fabric Reinforced Elastomeric Trough	Foot	40.0



USER NAME = jerojas	DESIGNED - JSR	REVISED -
PLOT SCALE = N/A	CHECKED - BHS	REVISED -
PLOT DATE = 9/16/2014	DRAWN - MJB	REVISED -
	CHECKED - BPS	REVISED -

**STATE OF ILLINOIS
DEPARTMENT OF TRANSPORTATION**

**FINGER PLATE EXPANSION JOINT DETAILS
STRUCTURE NO. 070-0015**

SHEET NO. S16 OF 28 SHEETS

F.A.P. RTE.	SECTION	COUNTY	TOTAL SHEETS	SHEET NO.
762	(2BR)BR-1	MOULTRIE	48	36
CONTRACT NO. 74357				

ILLINOIS FED. AID PROJECT