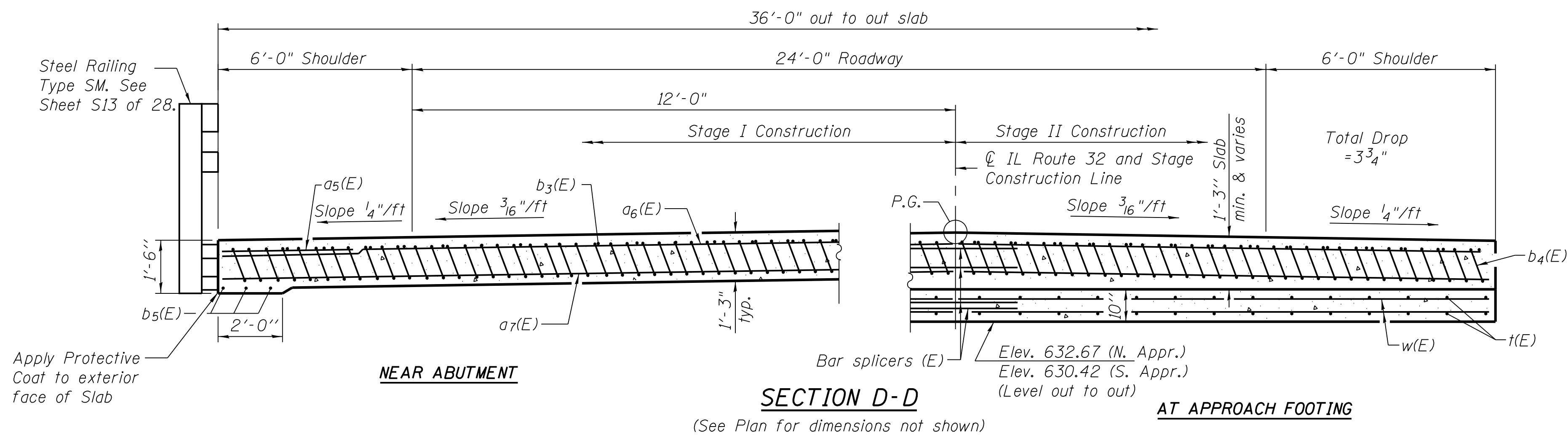


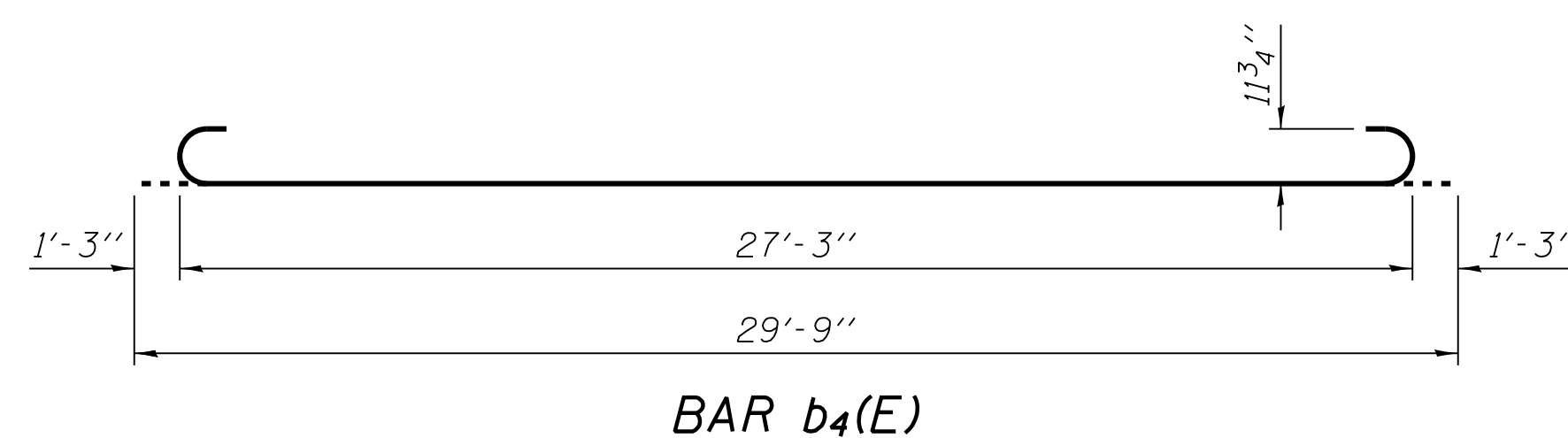
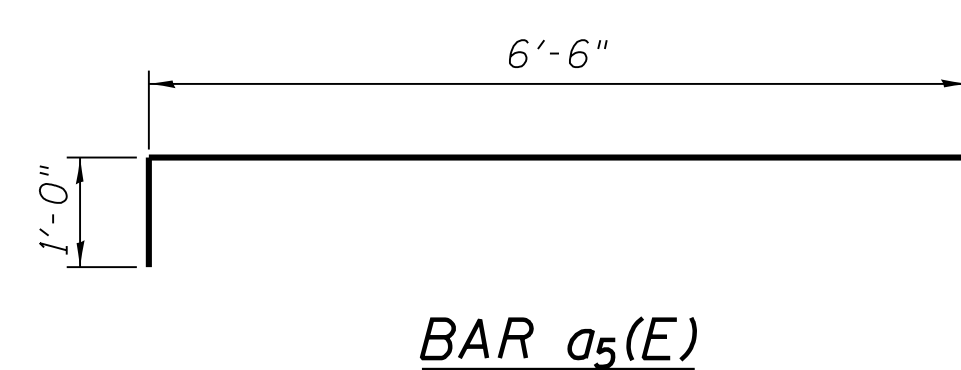
Notes:
 See sheet S17 of 28 for Detail A.
 Approach slab shall be paid for as Concrete Superstructure.
 Approach footing concrete shall be paid for as Concrete Structures.
 Reinforcement shall be paid for as Reinforcement Bars, Epoxy Coated.
 For v(E) bar details, see Sheet S22 of 28.
 The approach footing maximum applied service bearing pressure (Omax) = 2.0 ksf.
 For bar splicer details, see Sheet S24 of 28.
 Cost of excavation for approach footing included with Concrete Structures.
 For Granular Backfill for Structures, see Sheet S3 of 28.



* Tilt #9 b4(E) bars as required to maintain clearance.
 *** Cost included with Concrete Superstructure.

**TWO APPROACHES
 BILL OF MATERIAL**

Bar	No.	Size	Length	Shape
a5(E)	52	#6	7'-6"	▬
a6(E)	100	#4	17'-8"	▬
a7(E)	184	#5	17'-8"	▬
b3(E)	60	#4	29'-8"	▬
b4(E)	172	#9	29'-9"	▬
b5(E)	12	#5	15'-8"	▬
t(E)	152	#4	9'-8"	▬
w(E)	160	#5	17'-8"	▬
Concrete Superstructure			Cu. Yd.	106.0
Concrete Structures			Cu. Yd.	22.2
Reinforcement Bars, Epoxy Coated			Pound	27,870



FILE NAME = V:\1736\active\173630093_1.DDT_IL32.cover_LakeShelby\11a\structure\drawing\0700015_74357_018_Approach_Detail.dgn