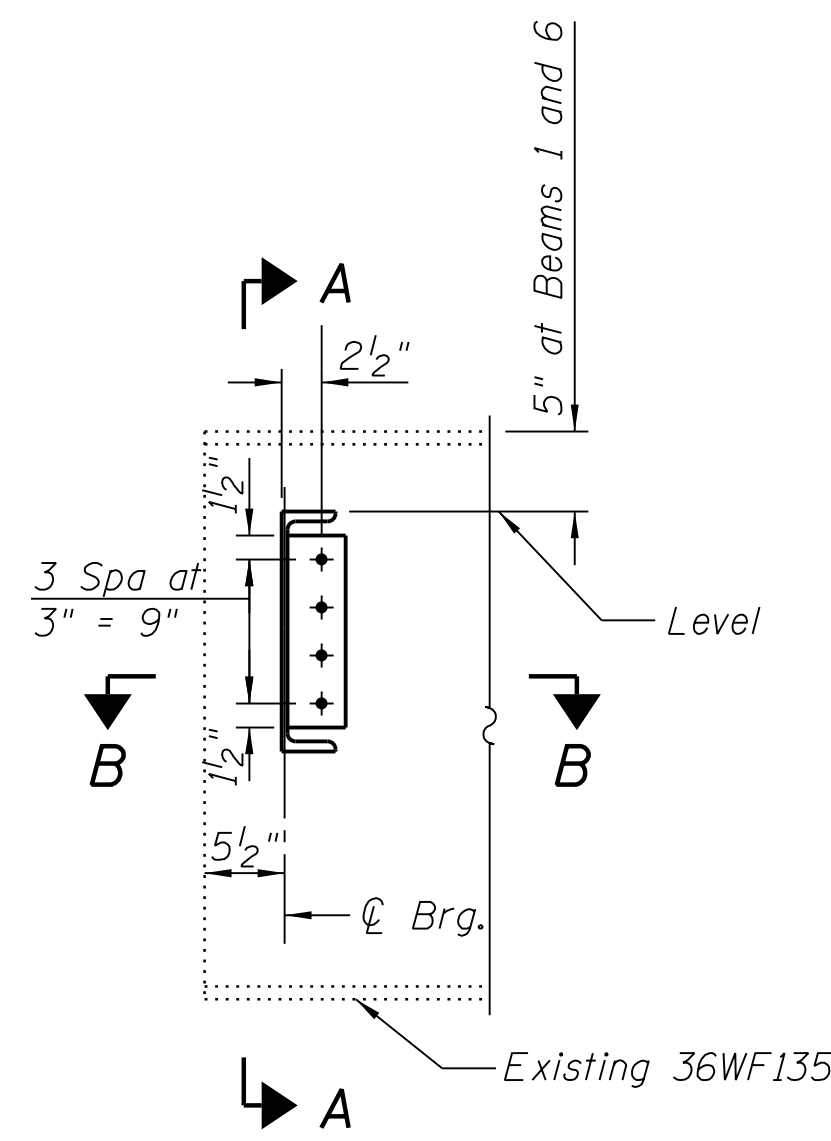
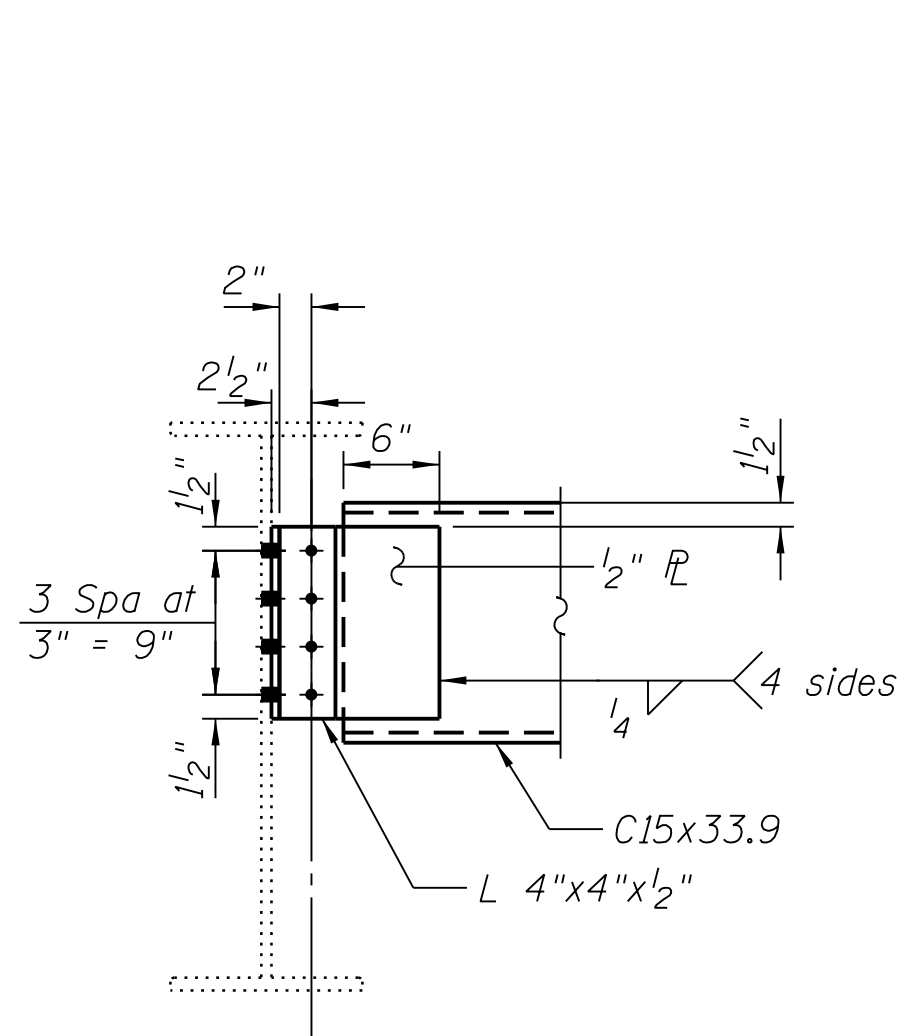


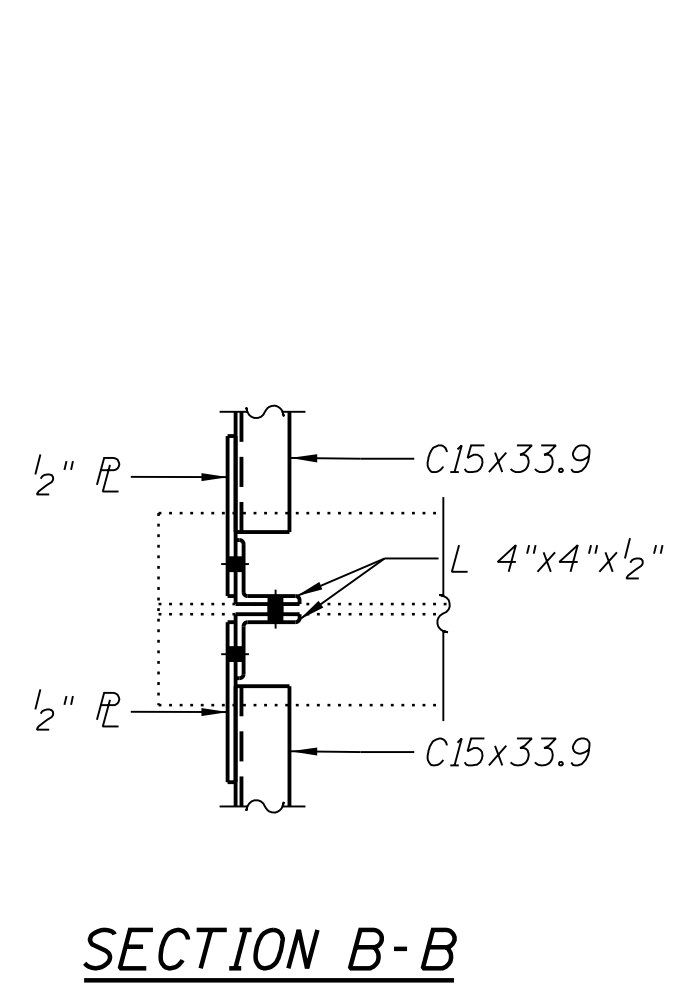
FILE NAME = \\N1736\active\173630093_1.DOT_IL32\cover_LakeShelby\11a\structural\drawing\0700015_74357_020_Ssteel2.dgn



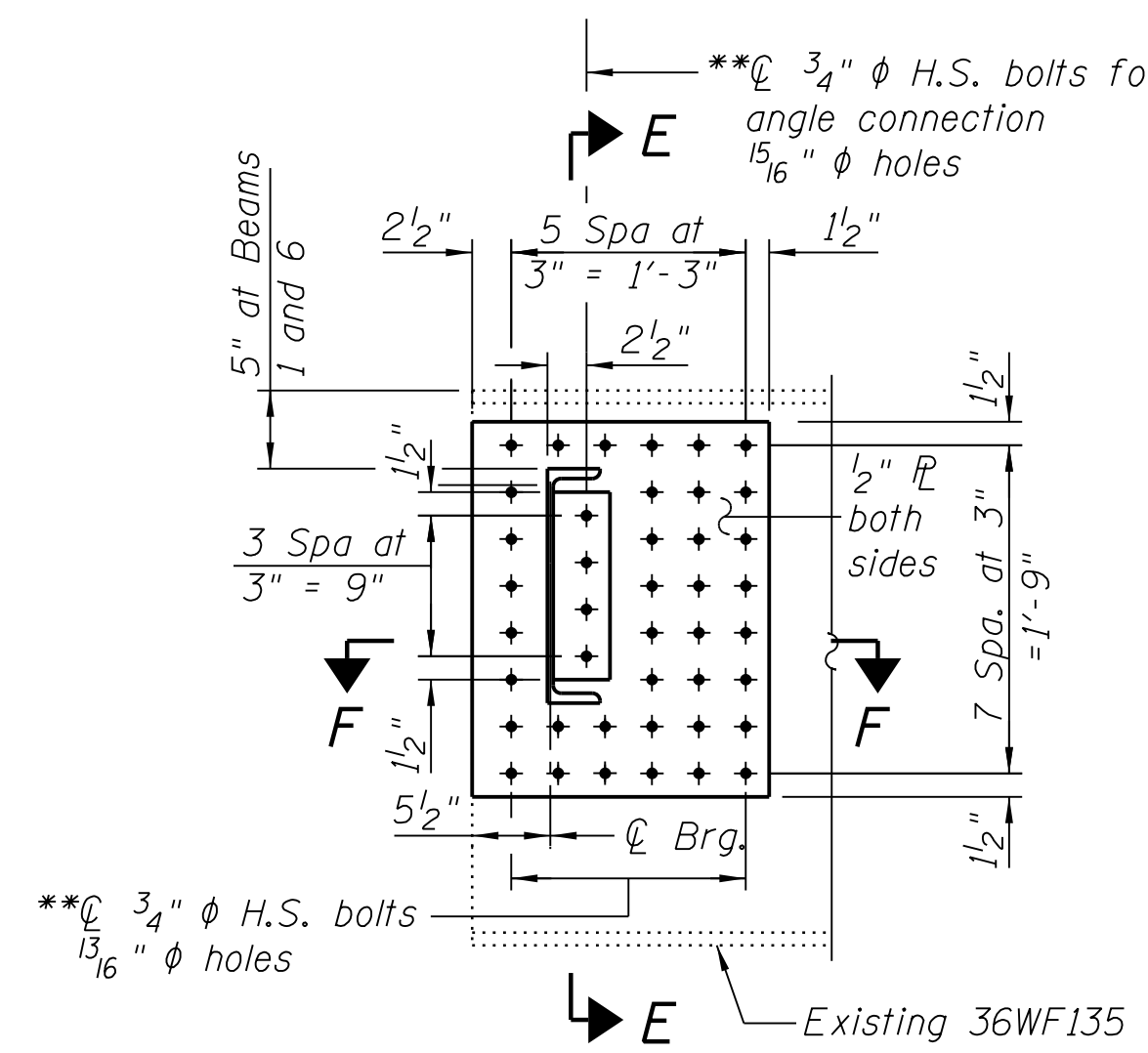
**END DIAPHRAGM D1
AT ABUTMENT**
(Replace all end diaphragms at the North and South Abutments.)
(10 Locations)



SECTION A-A

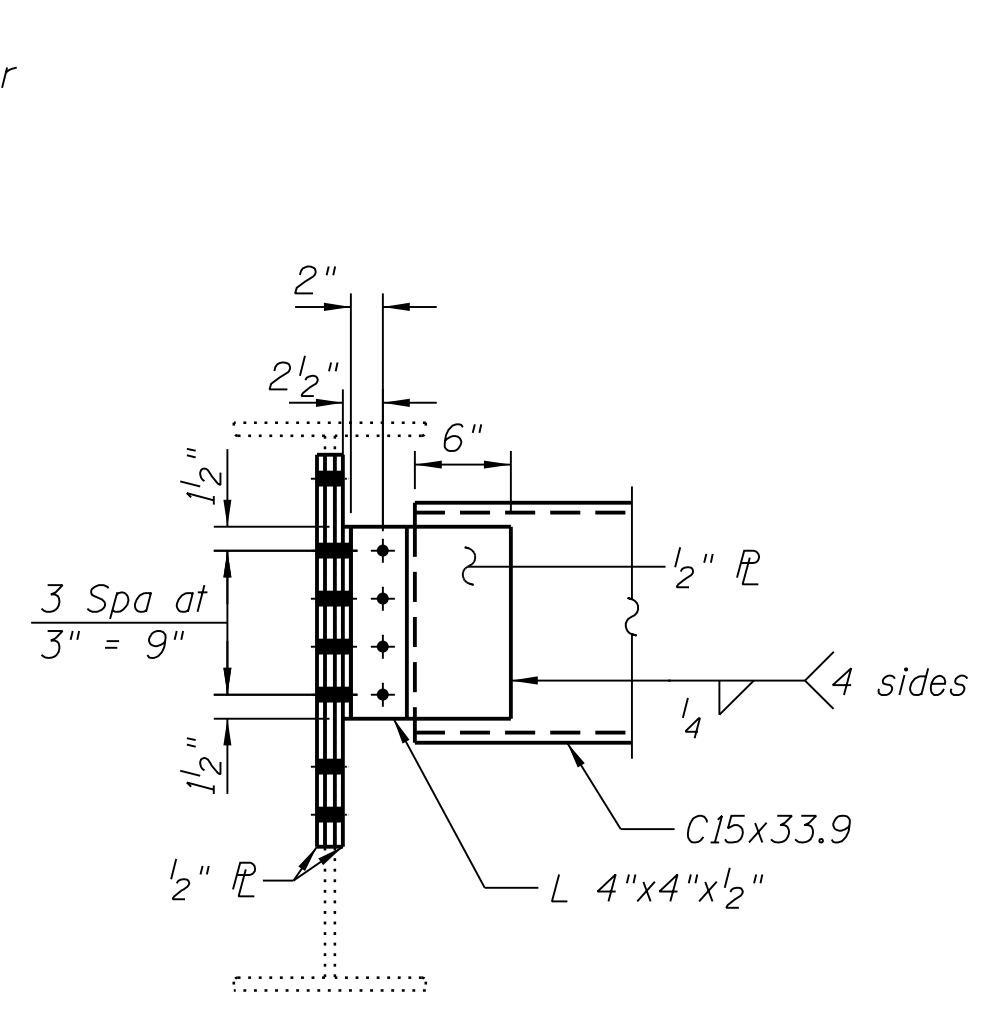


SECTION B-B

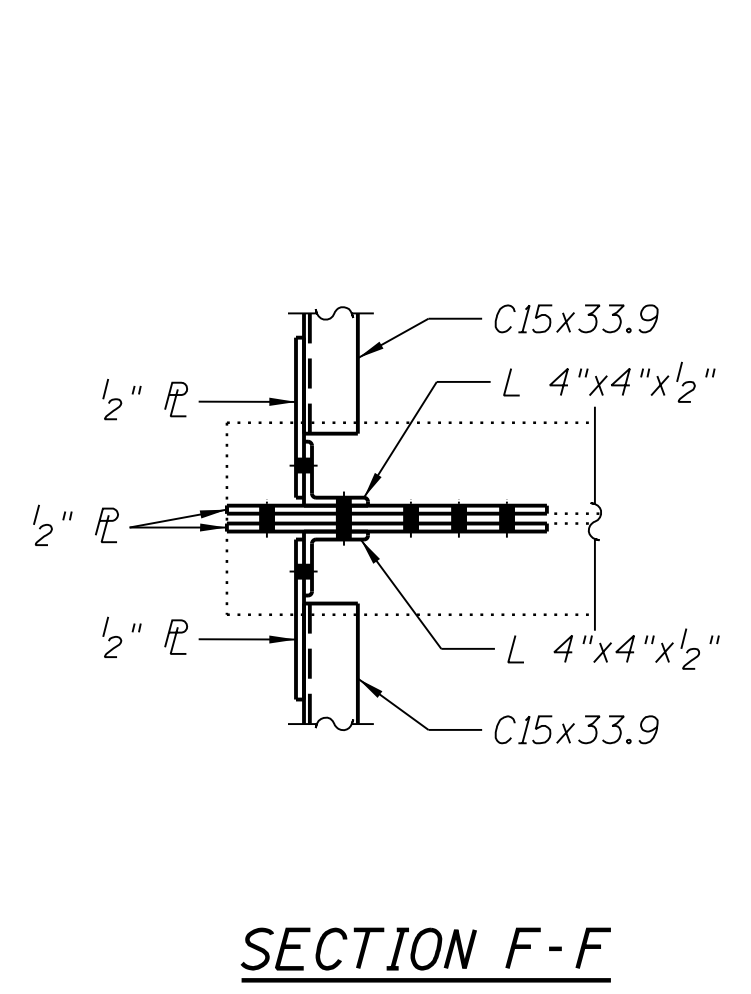


**BEAM END
RETROFIT AT ABUTMENTS**
(3 Required - Beam 3 at South Abutment, Beams 2 and 3 at North Abutment.)

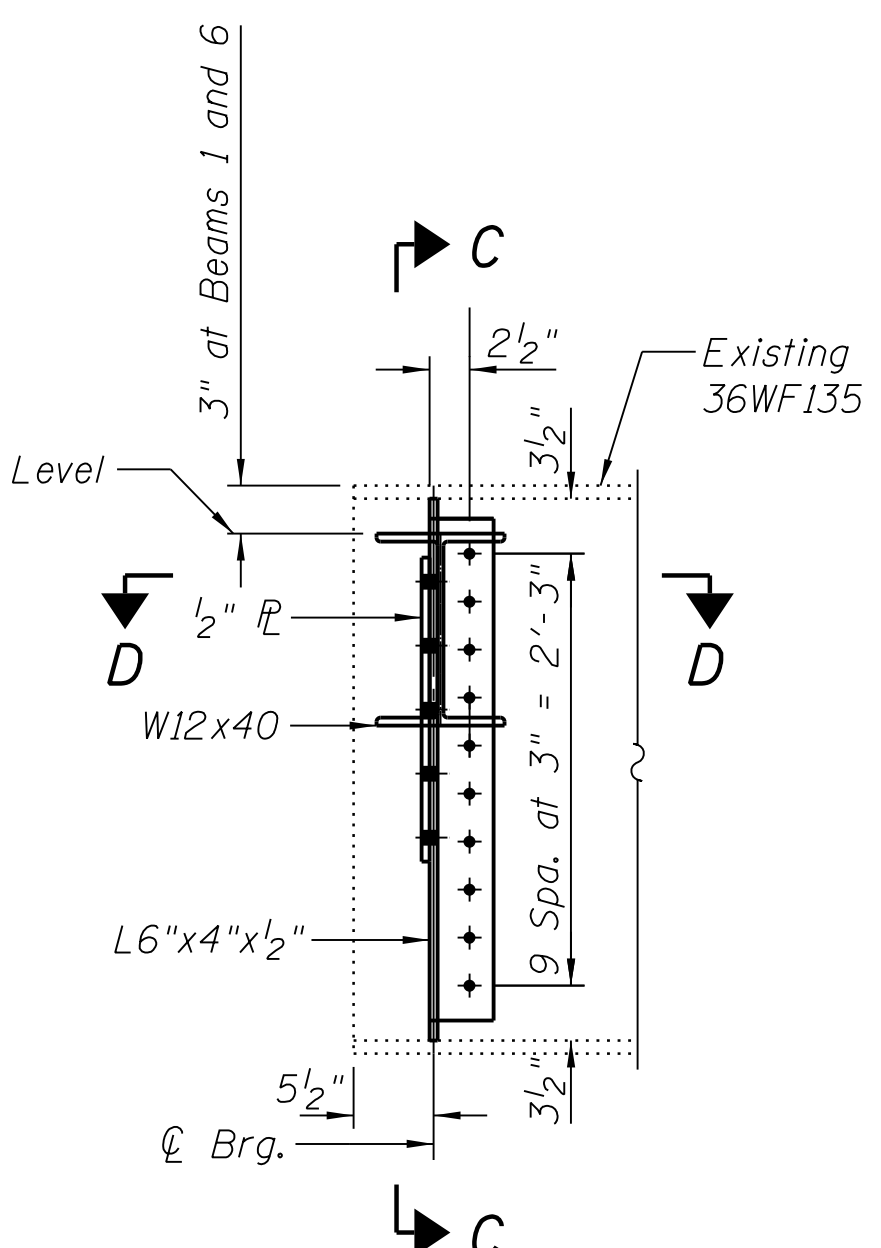
*** Drill holes in proposed plates in shop and use plate as template to drill remaining holes in field. Cost of field drilling included in Furnishing and Erecting Structural Steel.



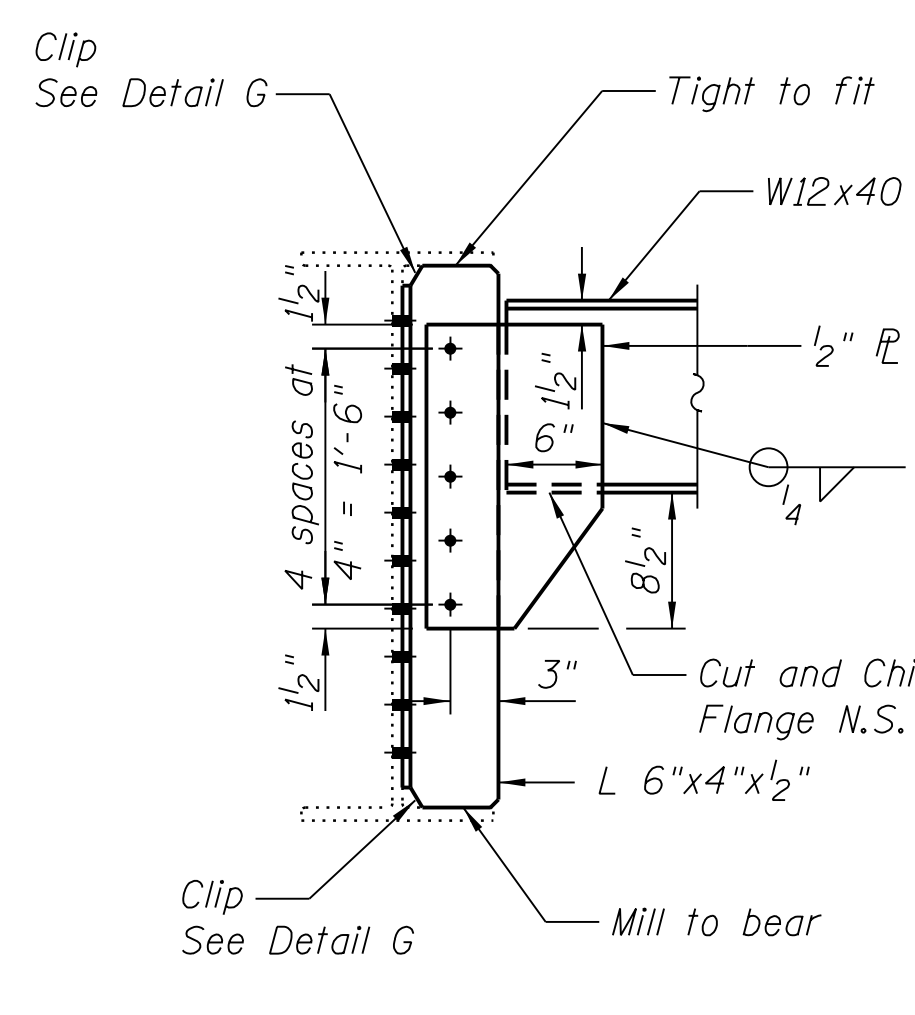
SECTION E-E



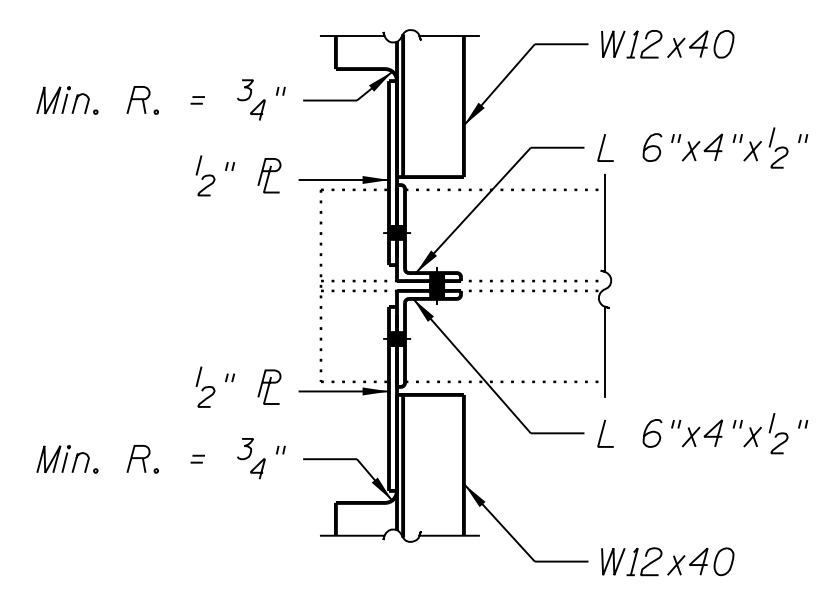
SECTION F-F



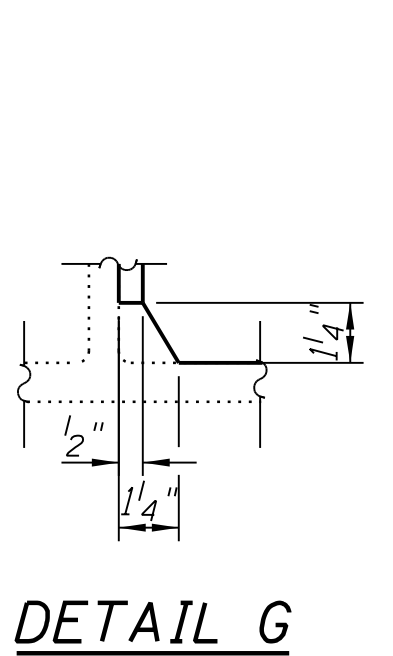
**END DIAPHRAGM D2
AT PIER 4**
(Replace all end diaphragms at Pier 4, each side of joint.)
(10 locations)



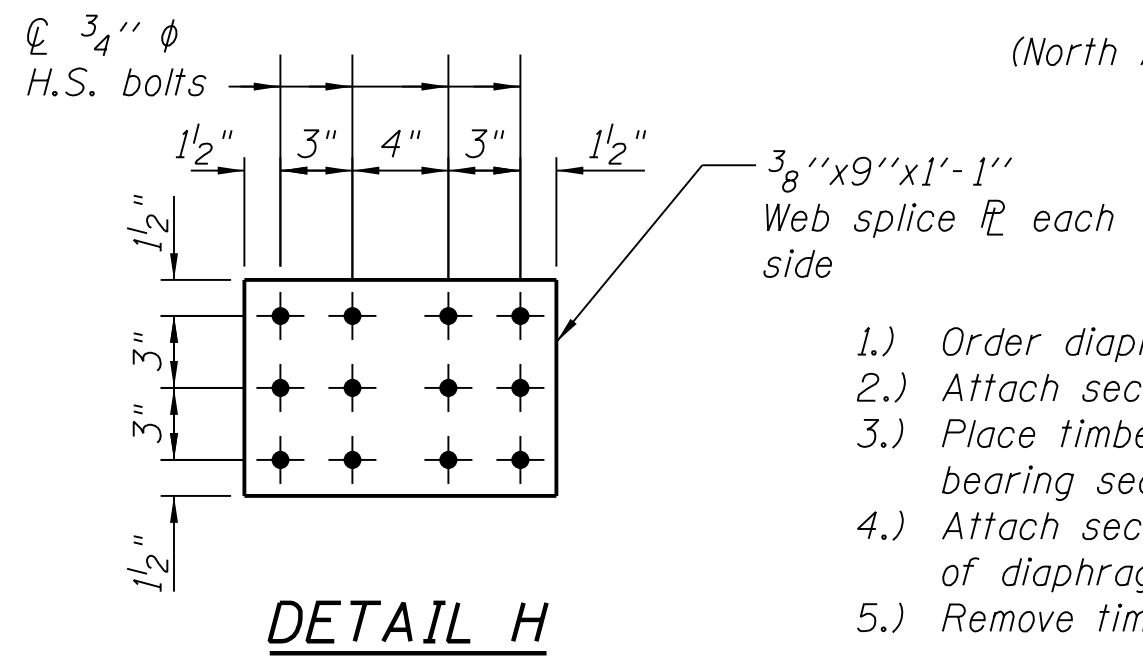
SECTION C-C



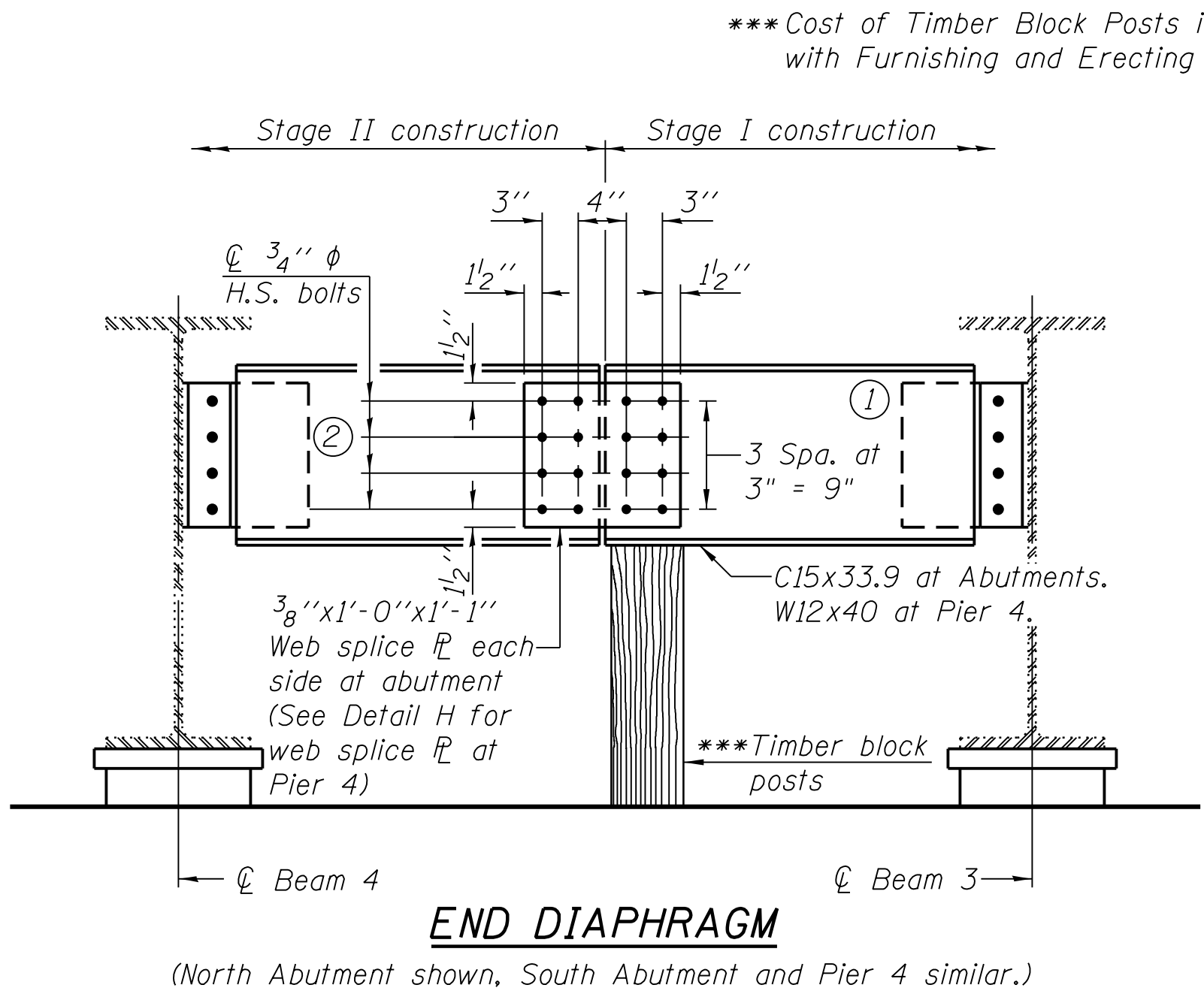
SECTION D-D



DETAIL G



DETAIL H



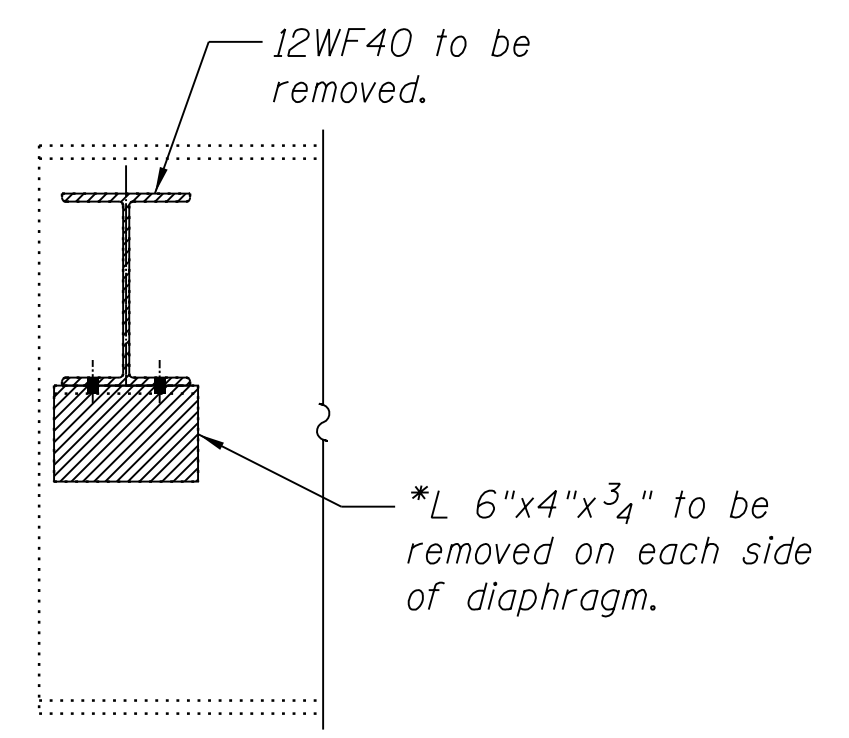
END DIAPHRAGM
(North Abutment shown, South Abutment and Pier 4 similar.)

**END DIAPHRAGM STAGE
CONSTRUCTION SEQUENCE**

- 1.) Order diaphragm in two sections.
- 2.) Attach section ① of diaphragm to Beam 3.
- 3.) Place timber block posts between section ① of diaphragm and bearing section.
- 4.) Attach section ② of diaphragm to both Beam 4 and section ① of diaphragm during stage II construction with splice plates.
- 5.) Remove timber block posts.

***Cost of Timber Block Posts is included with Furnishing and Erecting Structural Steel.

* Welds connecting L6"x4"x3/4" to 36WF135 are to be ground smooth. Cost included with Structural Steel Removal.



DIAPHRAGM REMOVAL
(At N. Abut., S. Abut., and at both bearing lines of Pier 4.)
(20 Locations)

BILL OF MATERIAL

Item	Unit	Total
Furnishing and Erecting Structural Steel	Pound	6,860
Structural Steel Removal	Pound	6,260

Note: Engineer to determine if additional locations of beam end repairs are required. Diaphragm length to be modified to account for beam end repairs.



USER NAME = jerojas	DESIGNED - JSR	REVISED -
PLOT SCALE = N/A	CHECKED - BHS	REVISED -
PLOT DATE = 9/16/2014	DRAWN - MJB	REVISED -
	CHECKED - BPS	REVISED -

STATE OF ILLINOIS
DEPARTMENT OF TRANSPORTATION

STRUCTURAL STEEL DETAILS (2 OF 2)
STRUCTURE NO. 070-0015
SHEET NO. S20 OF 28 SHEETS

F.A.P. RTE. 762	SECTION (2BR)BR-1	COUNTY MOULTRIE	TOTAL SHEETS 48	SHEET NO. 40
CONTRACT NO. 74357				
ILLINOIS FED. AID PROJECT				