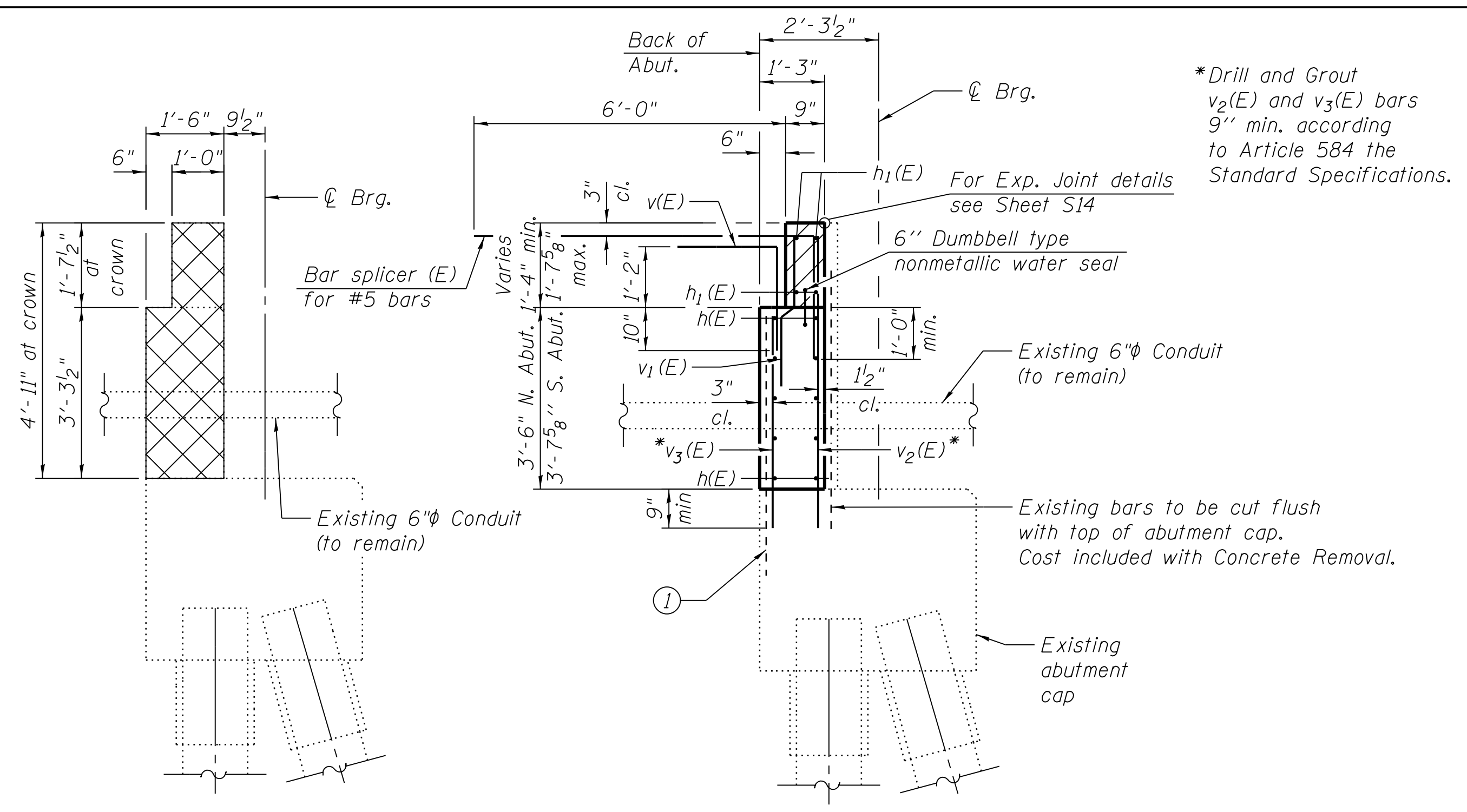


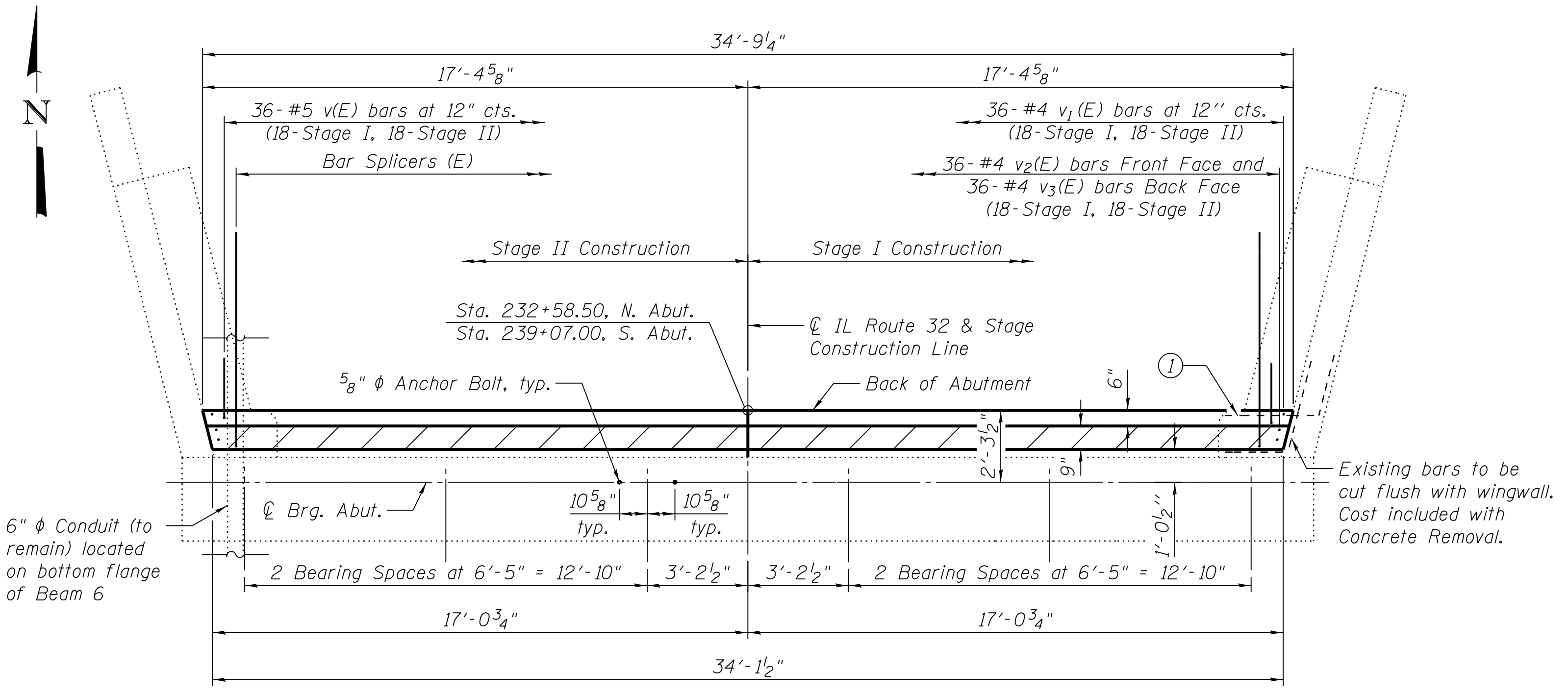
ELEVATION
Symm. about ϕ IL Route 32



SEC. THRU ABUT.
(Showing Removal)

SEC. THRU ABUT.
(Showing New Construction)

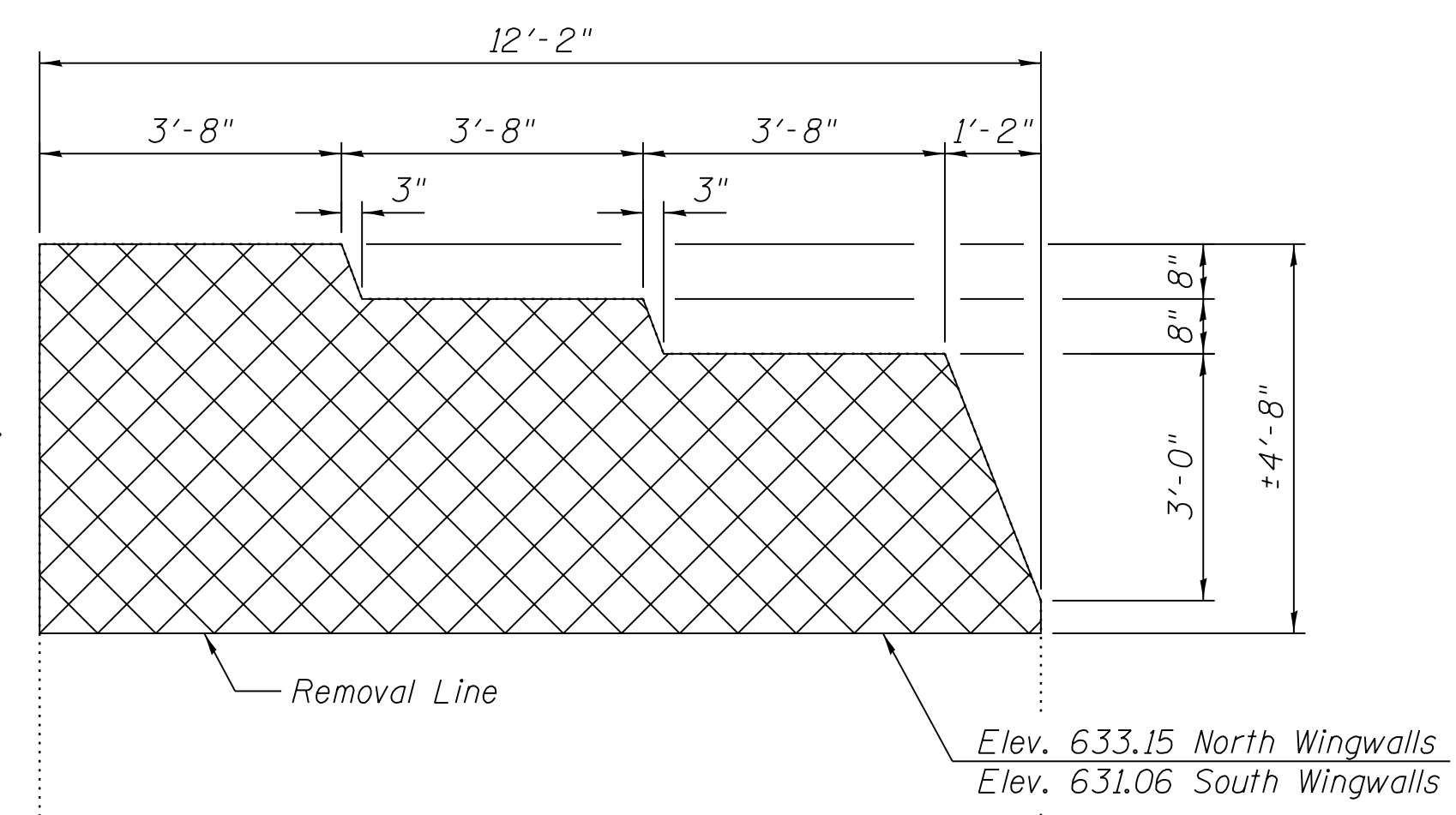
*Drill and Grout
v₂(E) and v₃(E) bars
9" min. according
to Article 584 the
Standard Specifications.



TOP VIEW
(N. Abutment Shown, S. Abutment Similar)

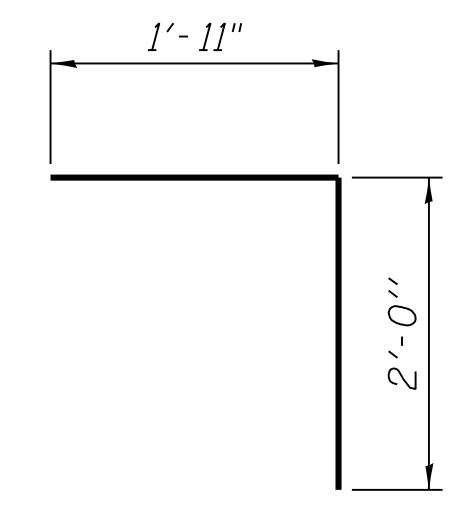
Notation:

① Existing bars to be cleaned
and incorporated into new
construction. Cost included
with Concrete Removal.

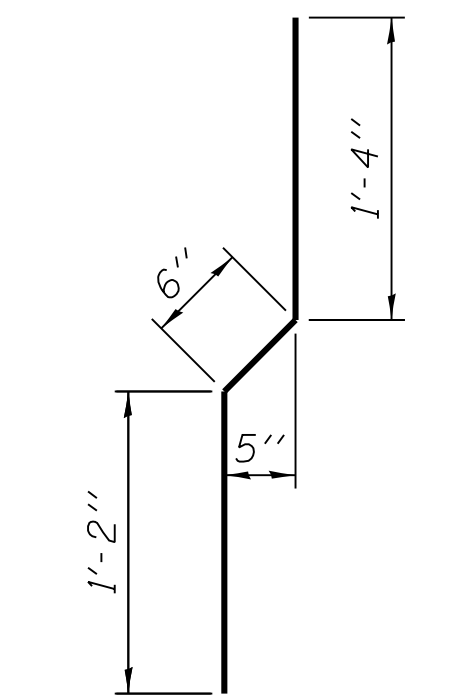


WINGWALL ELEVATION
(Showing Removal)

Concrete Removal



v(E) BAR



v₁(E) BAR

**TWO ABUTMENTS
BILL OF MATERIAL**

Bar	No.	Size	Length	Shape	
h(E)	40	#5	16'-8"	—	
h ₁ (E)	16	#6	16'-8"	—	
v(E)	72	#5	3'-11"	└	
v ₁ (E)	72	#4	3'-0"	└	
v ₂ (E)	72	#4	5'-11"	—	
v ₃ (E)	72	#4	4'-3"	—	
Reinforcement Bars, Epoxy Coated				Pound	2,020
Concrete Superstructure				Cu. Yd.	3.4
Concrete Structures				Cu. Yd.	11.5
Granular Backfill for Structures				Cu. Yd.	53
Concrete Removal				Cu. Yd.	23.8
Concrete Sealer				Sq. Ft.	368
Structure Excavation				Cu. Yd.	19

Notes:
Hatched area to be poured after superstructure false work has been removed. Quantity of concrete included with Concrete Superstructure. For details of Bar Splicers, see Sheet S24.

FILE NAME = V:\1736\active\173630009_1.DOT_IL32.cover_LakeShelby\173630009_173630009_0700015_74357_022_abutment.dgn



USER NAME = jerojas	DESIGNED - JSR	REVISED -
PLOT SCALE = N/A	CHECKED - BHS	REVISED -
PLOT DATE = 9/16/2014	DRAWN - MJB	REVISED -
	CHECKED - BPS	REVISED -

**STATE OF ILLINOIS
DEPARTMENT OF TRANSPORTATION**

**ABUTMENT BACKWALL RECONSTRUCTION DETAILS
STRUCTURE NO. 070-0015**

F.A.P. RTE. 762	SECTION (2BR)BR-1	COUNTY MOULTRIE	TOTAL SHEETS 48	SHEET NO. 42
CONTRACT NO. 74357				

SHEET NO. S22 OF 28 SHEETS

ILLINOIS FED. AID PROJECT