

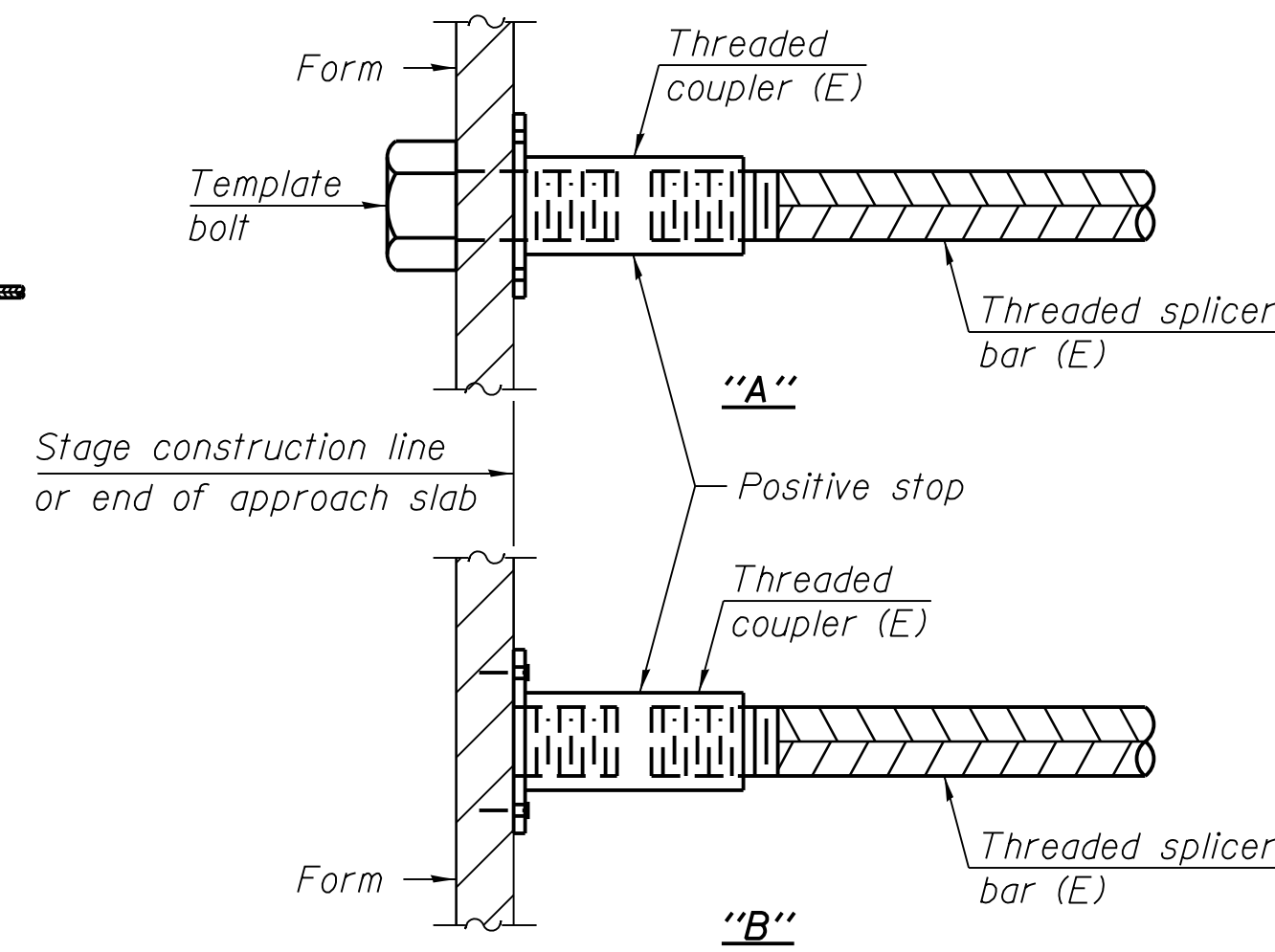
STANDARD BAR SPLICER ASSEMBLY

Minimum Lap Lengths				
Bar size to be spliced	Table 1	Table 2	Table 3	Table 4
3, 4	2'-1"	2'-4"	2'-7"	2'-11"
5	2'-7"	2'-11"	3'-3"	3'-8"
6	3'-1"	3'-6"	3'-10"	4'-5"
7	4'-2"	4'-8"	5'-2"	5'-10"
8	5'-5"	6'-2"	6'-9"	7'-8"
9	6'-10"	7'-9"	8'-7"	9'-8"

Table 1: Epoxy bar, 0.8 Class C
 Table 2: Epoxy bar, Top bar lap, 0.8 Class C
 Table 3: Epoxy bar, Class C
 Table 4: Epoxy bar, Top bar lap, Class C

Threaded splicer bar length = min. lap length + 1 1/2" + thread length

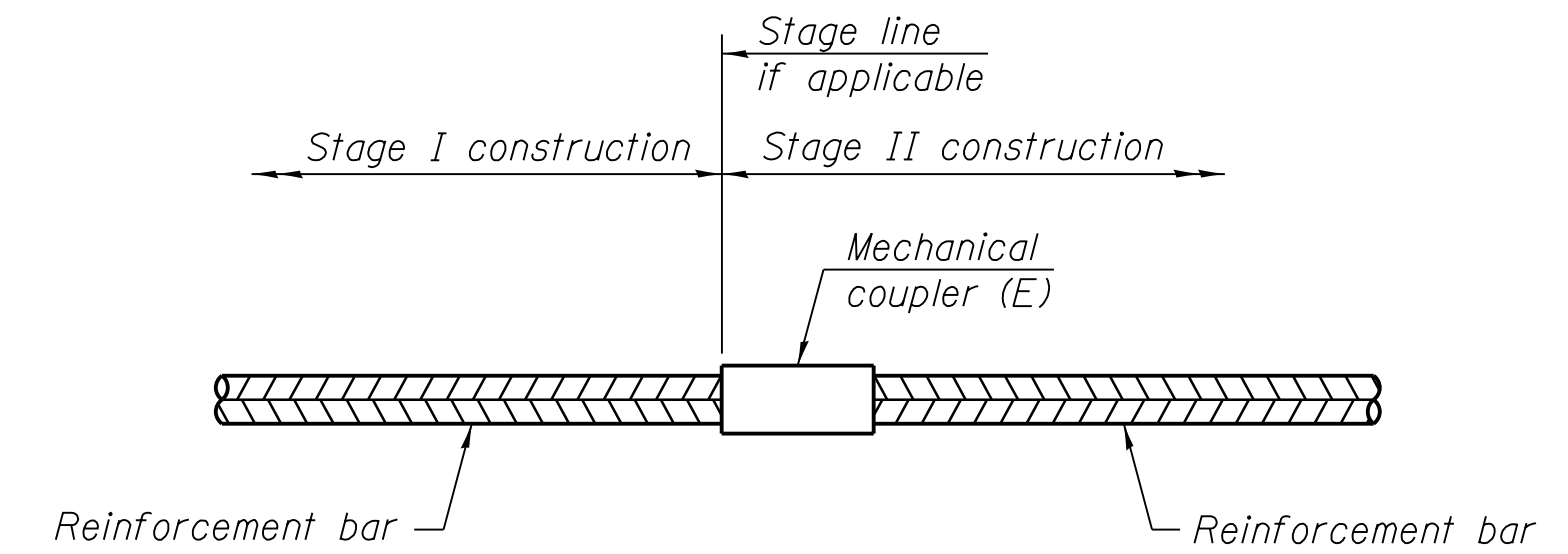
Location	Bar size	No. assemblies required	Table for minimum lap length
Bridge Deck	#5	1742	Table 3
Abutment Backwall	#5	20	Table 4
Abutment Backwall	#6	8	Table 4
Approach Slab	#4	50	Table 4
Approach Slab	#5	92	Table 3
Approach Footings	#5	80	Table 3



INSTALLATION AND SETTING METHODS

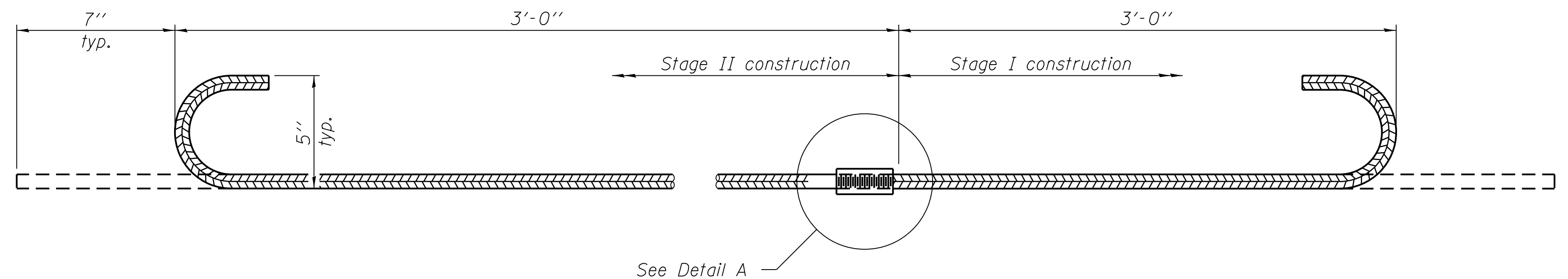
"A" : Set bar splicer assembly by means of a template bolt.
 "B" : Set bar splicer assembly by nailing to wood forms or cementing to steel forms.
 (E) : Indicates epoxy coating.

NOTES
 Splicer bars shall be deformed with threaded ends and have a minimum 60 ksi yield strength.
 All reinforcement shall be lapped and tied to the splicer bars.
 Bar splicer assemblies shall be epoxy coated according to the requirements for reinforcement bars. See Section 508 of the Standard Specifications.
 See approved list of bar splicer assemblies and mechanical splicers for alternatives.



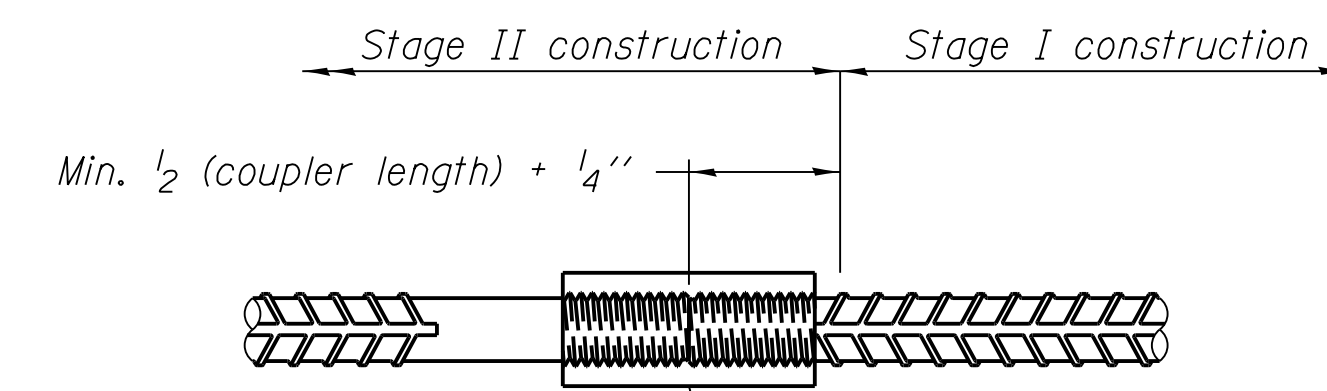
STANDARD MECHANICAL SPLICER

Location	Bar size	No. assemblies required



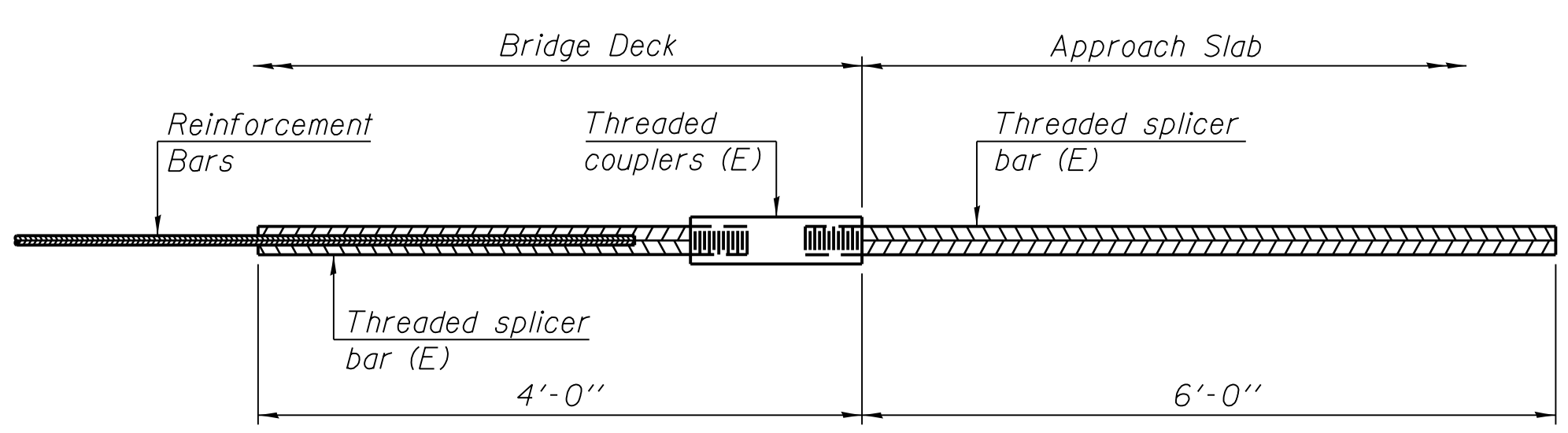
#5 #4(E) BAR SPLICER ASSEMBLY FOR EDGE BEAMS AT STAGE CONSTRUCTION JOINT

No. required = 12



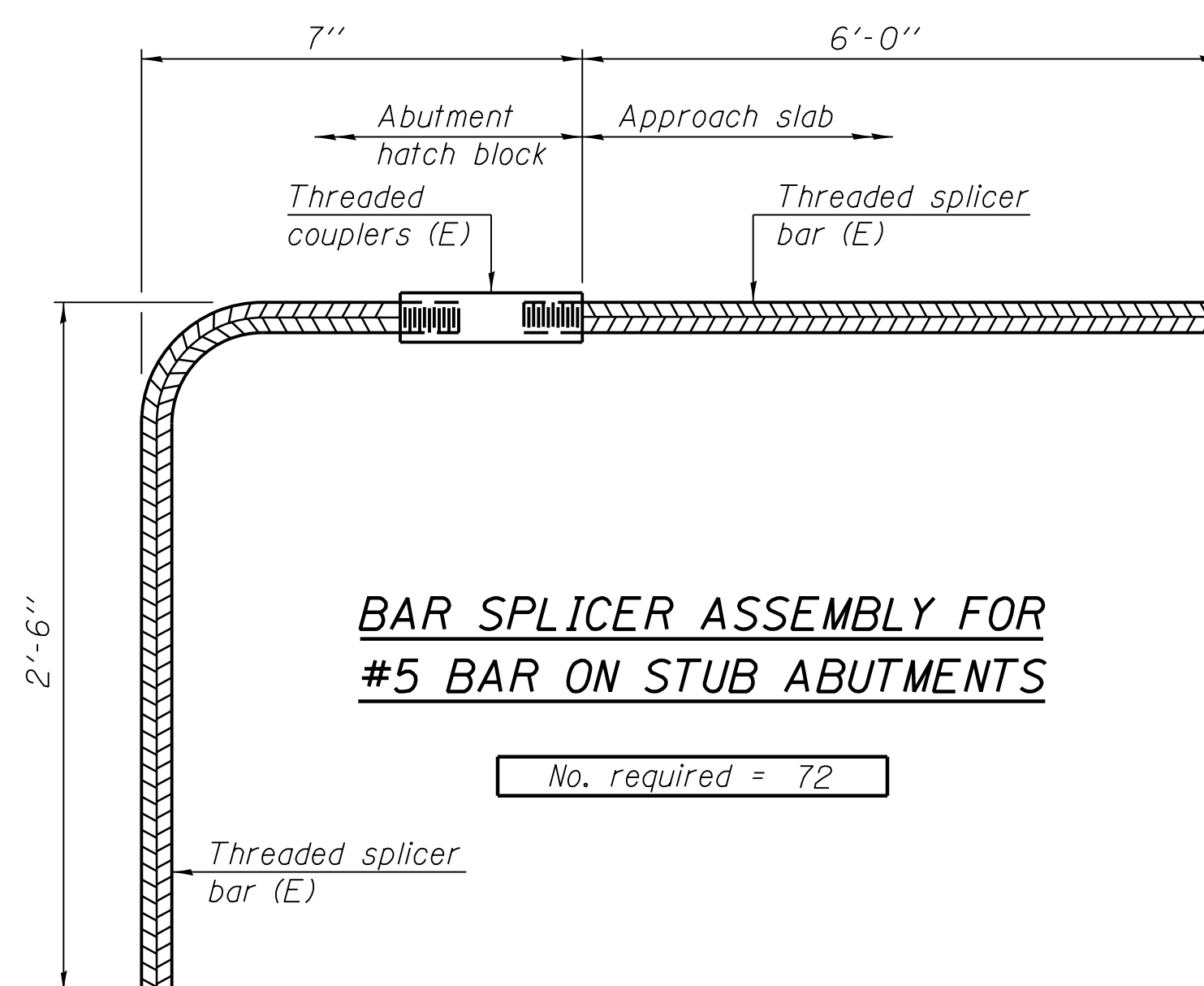
DETAIL A

** The bar splicer assembly shall allow completion of the splice without turning of the hook bars. The stage II splice bar shall be threaded such that the entire coupler can be threaded onto the splice bar.



BAR SPLICER ASSEMBLY FOR #5 BAR ON INTEGRAL OR SEMI-INTEGRAL ABUTMENTS

No. required = 0



BAR SPLICER ASSEMBLY FOR #5 BAR ON STUB ABUTMENTS

No. required = 72

FILE NAME = \\N1736\active\173630009\1\DOT_IL\32\over_LakeShelby\11a\structural\Drawng\0700015_74357_024_Splicer.dgn