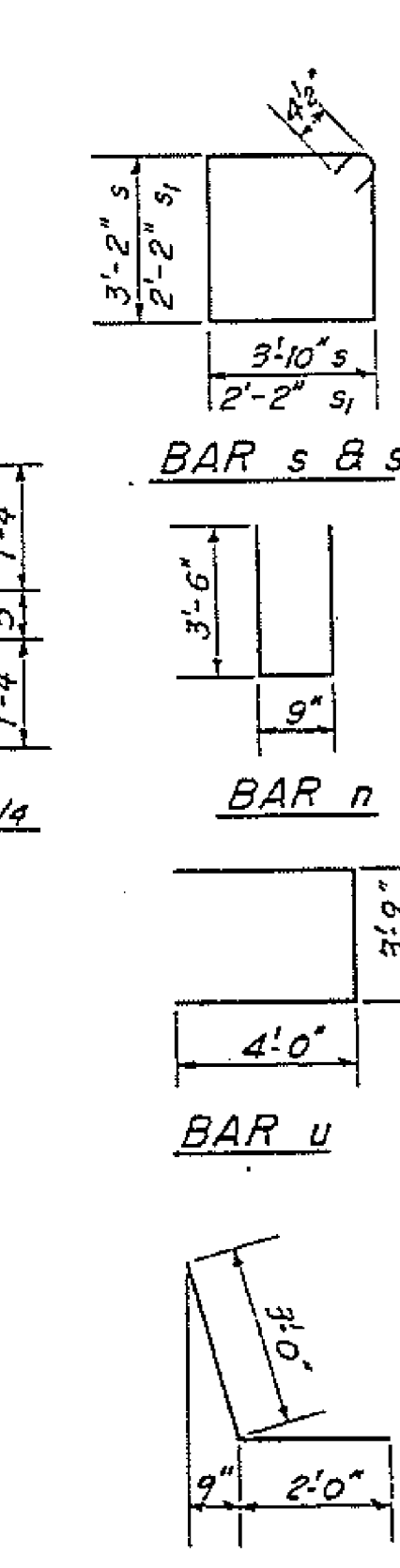
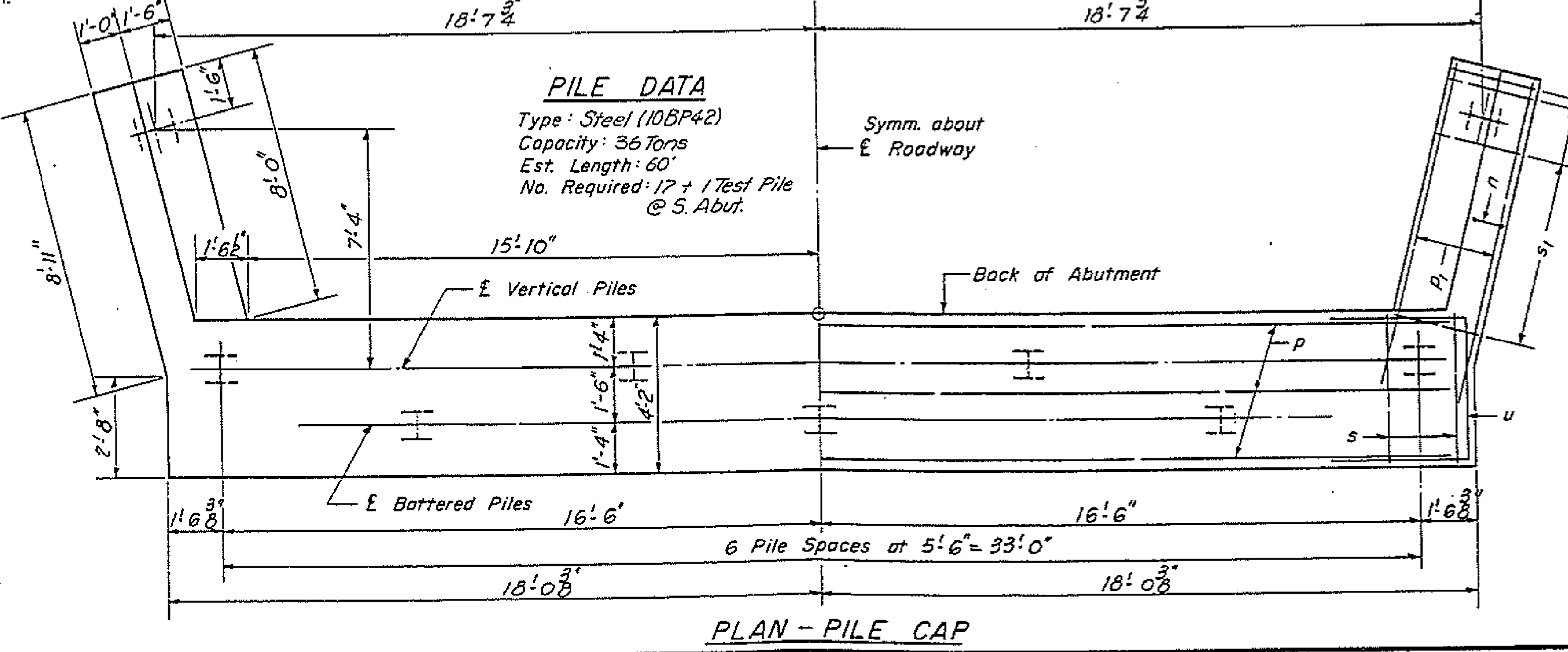
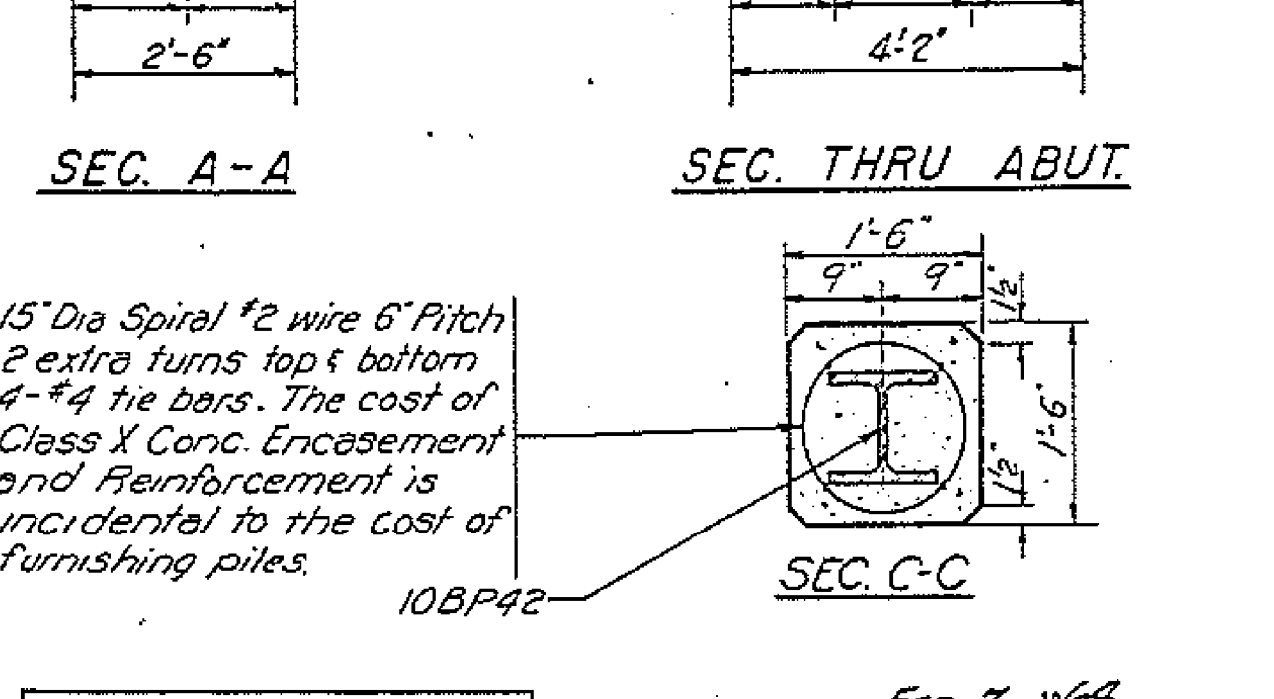


TWO ABUTMENTS
BILL OF MATERIAL

Bar	No.	Size	Length	Stages
h	6	#6	35'-9"	
h1	16	#5	33'-9"	
h2	40	#5	5'-0"	
h3	8	#4	3'-2"	
h4	8	#4	8'-10"	
h5	24	#4	10'-8"	
h6	32	#4	1'-8"	
h7	8	#4	8'-8"	
n	36	#5	7'-9"	
p	16	#7	35'-9"	
p1	24	#7	10'-0"	
s	72	#4	14'-9"	
s1	36	#4	9'-5"	
u	16	#6	11'-9"	
v	120	#4	5'-0"	
v1	32	#4	7'-10"	
v2	32	#4	7'-2"	
v3	64	#4	6'-6"	
v4	60	#4	3'-3"	
Class X Concrete		Cu. Yds.	70.8	
Reinforcement Bars		Lbs.	5890	
Steel Piles (10BP42)		Lin. Ft.	1020	
Test Piles Steel (105P42)		Ea.	1	



DESIGNED: T. M. Yang
CHECKED: J. M. Jaramila
DRAWN: W. A. Sousman Jr.
CHECKED: J. M. J

EXAMINED: W. E. Baumann
PASSED: [Signature]
APPROVED: U. E. [Signature]

FEB. 7 1964

ABUTMENTS
S.B.I. RT. 32 SEC. 2 BR
MOULTRIE COUNTY
STATION 235+82.75

FILE NAME = V:\1736\active\173630009_1.DOT_IL_32_cover_LakeShelby\11a\structural\br-orig_0700015_74357_027_Existing3.dwg



USER NAME = jerojas	DESIGNED - JSR	REVISED -
PLOT SCALE = N/A	CHECKED - BHS	REVISED -
PLOT DATE = 9/16/2014	DRAWN - MJB	REVISED -
	CHECKED - BPS	REVISED -

F.A.P. RTE.	SECTION	COUNTY	TOTAL SHEETS	SHEET NO.
762	(2BR)BR-1	MOULTRIE	48	47
CONTRACT NO. 74357			ILLINOIS FED. AID PROJECT	