

STATE OF ILLINOIS
 DEPARTMENT OF TRANSPORTATION
 DIVISION OF HIGHWAYS

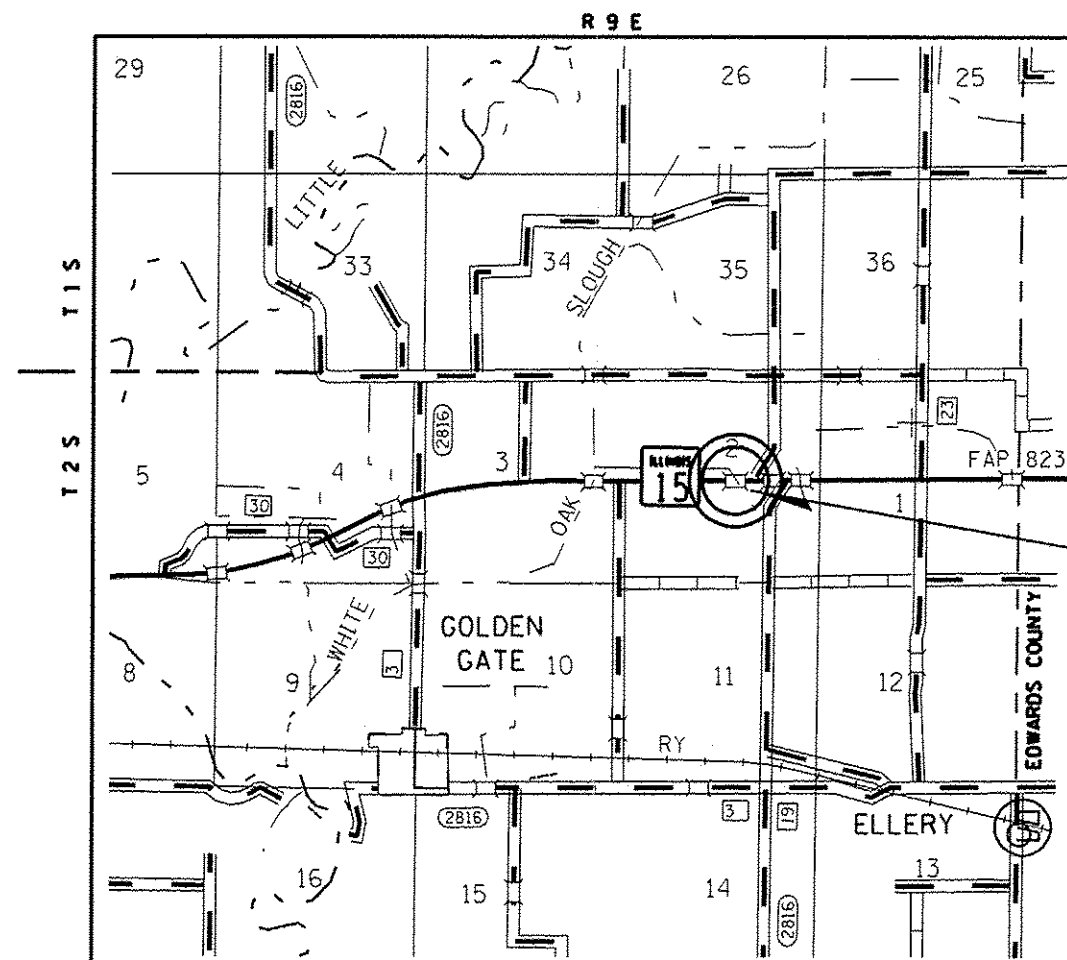
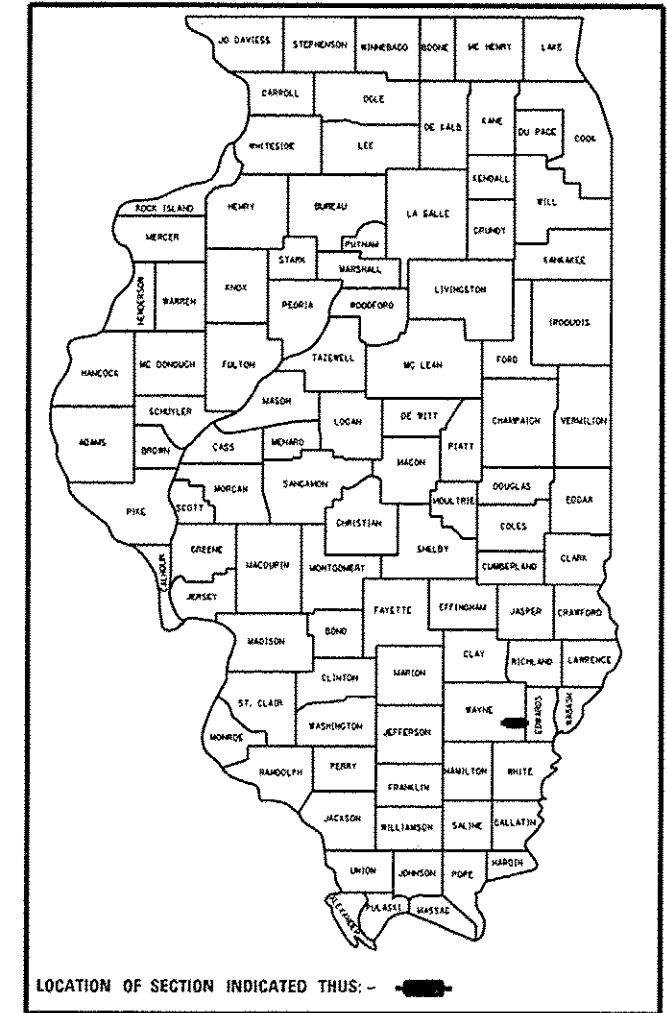
**PROPOSED
 HIGHWAY PLANS**

F.A.P. ROUTE 823 (IL. RTE. 15)
 SECTION (22BR2)BR
 PROJECT ACF-0823 (013)
 BRIDGE DECK
 WAYNE COUNTY
 C-97-043-09

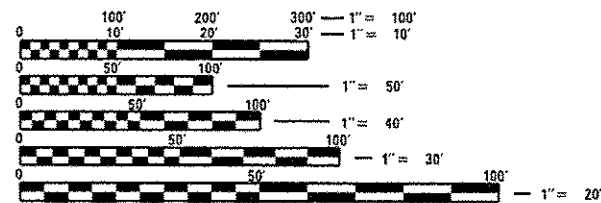
FOR INDEX OF SHEETS, SEE SHEET NO. 2

F.A.P. RTE.	SECTION	COUNTY	TOTAL SHEETS	SHEET NO.
823	(22BR2)BR	WAYNE	34	1
		ILLINOIS	CONTRACT NO. 74365	

D-97-020-09



MINOR ARTERIAL (NON-URBAN)
 ADT = 2300 (2013)



FULL SIZE PLANS HAVE BEEN PREPARED USING STANDARD ENGINEERING SCALES. REDUCED SIZED PLANS WILL NOT CONFORM TO STANDARD SCALES. IN MAKING MEASUREMENTS ON REDUCED PLANS, THE ABOVE SCALES MAY BE USED.

J.U.L.I.E.
 JOINT UTILITY LOCATION INFORMATION FOR EXCAVATION
 1-800-892-0123
 OR 811

PROJECT ENGINEER: ROB MACKLIN
 PROJECT MANAGER: LYNN McCLELLAN/
 NEIL SANDSCHAFFER
 PHONE: (217)-342-8245
 CONTRACT NO. 74365

PROPOSED SN-096-0063
 STA. 310+85.00
 115'-4 1/2" BK-BK ABUTMENTS
 SKEW = 0°
 DECK ROADWAY WIDTH=32'-0"

GROSS LENGTH = 545 FT. = 0.103 MILE
 NET LENGTH = 545 FT. = 0.103 MILE

STATE OF ILLINOIS
 DEPARTMENT OF TRANSPORTATION
 DIVISION OF HIGHWAYS

SUBMITTED August 15 20 14
 Ryan L. Dinkel, Esq.
 DEPUTY DIRECTOR OF HIGHWAYS, REGION ENGINEER

Oct 17 20 14
 John D. Baranzelli, P.E., Jr.
 ENGINEER OF DESIGN AND ENVIRONMENT

Oct 17 20 14
 Omar Osman, P.E., Jr.
 DIRECTOR OF HIGHWAYS, CHIEF ENGINEER

PRINTED BY THE AUTHORITY
 OF THE STATE OF ILLINOIS