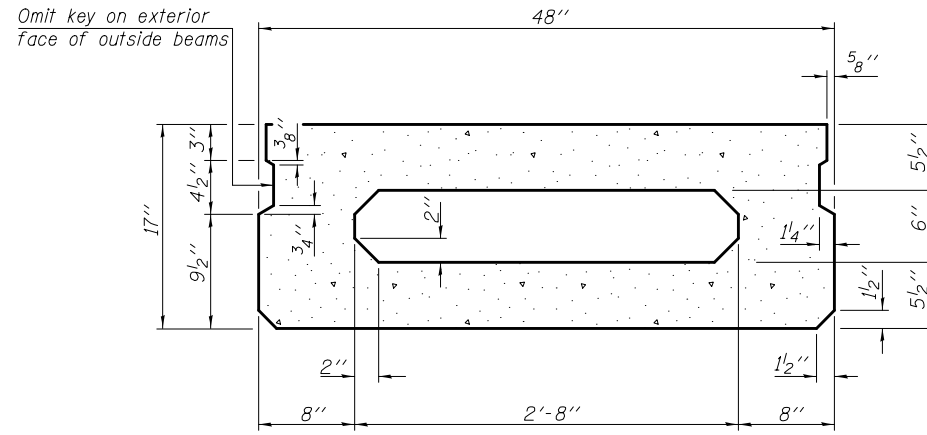
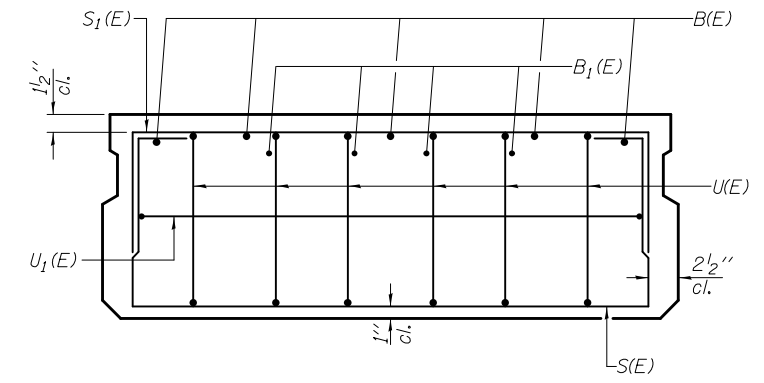


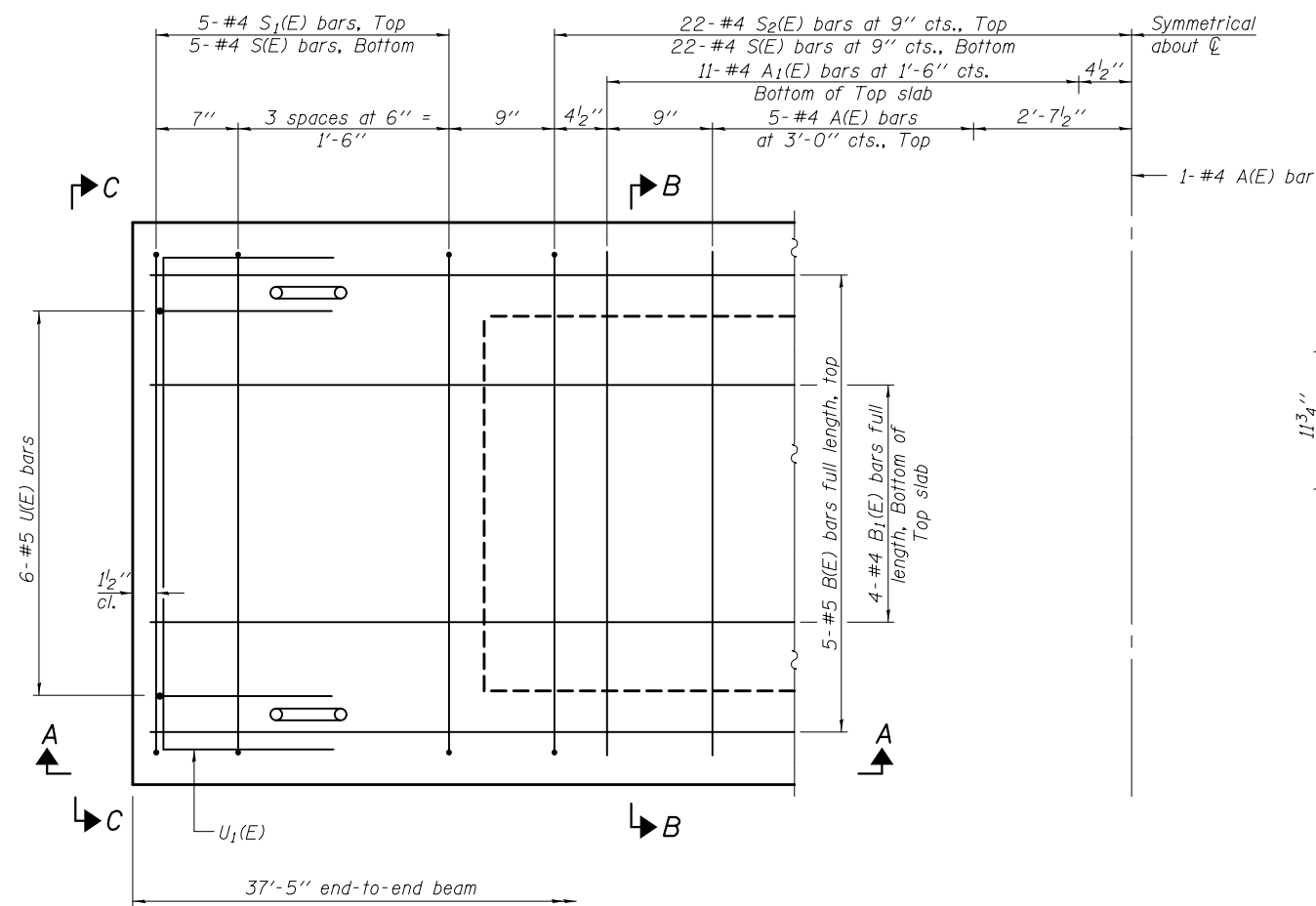
**SECTION A-A**



**SECTION B-B**  
(Showing dimensions)

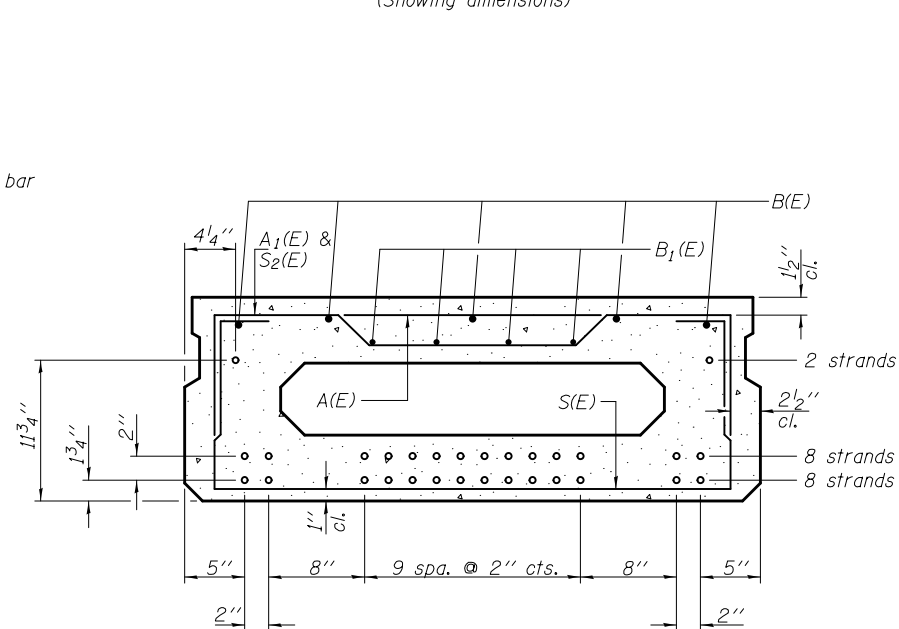


**VIEW C-C**



**PLAN VIEW**

Note: Spacing of S(E) and S2(E) bars may be adjusted up to 4" in the immediate area of the transverse tie diaphragms to miss the block outs for the transverse ties.



**SECTION B-B**

(Showing reinforcement and permissible strand locations)

Note: Place the number of strands specified in each row symmetrically about the centerline of beam in the permissible strand locations shown.

**MINIMUM BAR LAP**

#4 bar = 2'-0"  
#5 bar = 2'-6"

**BAR LIST**  
**ONE BEAM ONLY**  
(For information only)

Bar	No.	Size	Length	Shape
A(E)	11	#4	3'-7"	—
A1(E)	22	#4	3'-10"	~
B(E)	5	#5	37'-2"	—
B1(E)	4	#4	37'-2"	—
S(E)	53	#4	6'-9"	□
S1(E)	10	#4	5'-3"	□
S2(E)	43	#4	5'-6"	□
U(E)	12	#5	3'-8"	□
U1(E)	2	#4	6'-0"	□

Note: See sheet 11 of 18 for additional details and Bill of Material.

PD-1748-0

7-1-10

DESIGNED - IRENE PANTOJA  
CHECKED - JOSUE D. ORTIZ-VARELA  
DRAWN - MICHAEL B. MOSSMAN  
CHECKED - J.O.V. / I.P. / G.R.A.

EXAMINED  
PASSED

Jaime F. Joffe  
ACTING ENGINEER OF BRIDGE DESIGN  
Carl Kopp  
ACTING ENGINEER OF BRIDGES AND STRUCTURES

DATE - SEPTEMBER 16, 2014

REVISED  
REVISED

STATE OF ILLINOIS  
DEPARTMENT OF TRANSPORTATION

17" x 48" PPC DECK BEAM  
STRUCTURE NO. 096 - 0063

SHEET NO. 10 OF 18 SHEETS

F.A.P. RTE.	SECTION	COUNTY	TOTAL SHEETS	SHEET NO.
823	(22BR2)BR	WAYNE	34	26
				CONTRACT NO. 74365

ILLINOIS FED. AID PROJECT