



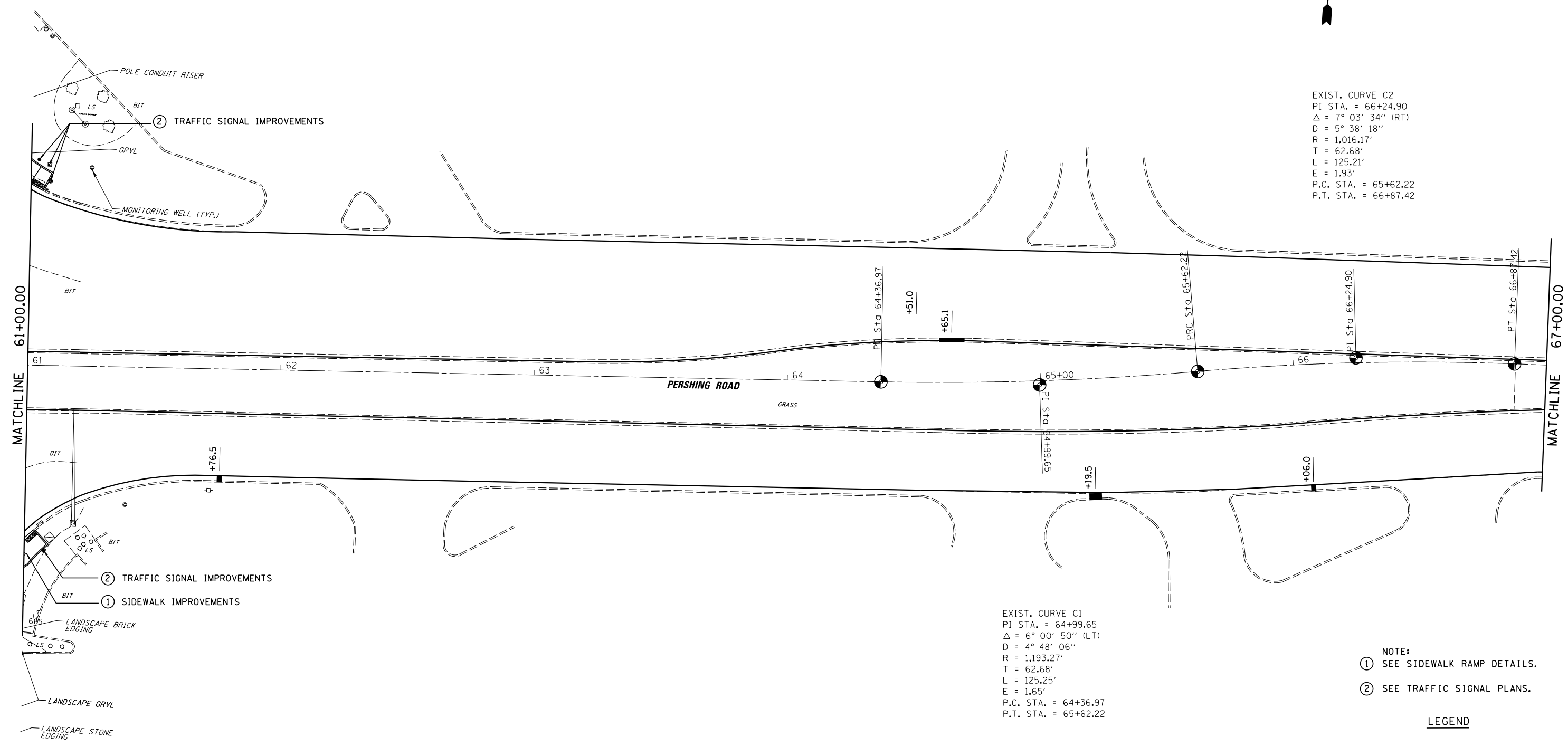
EXIST. CURVE C2
 PI STA. = 66+24.90
 $\Delta = 7^{\circ} 03' 34''$ (RT)
 $D = 5^{\circ} 38' 18''$
 $R = 1,016.17'$
 $T = 62.68'$
 $L = 125.21'$
 $E = 1.93'$
 P.C. STA. = 65+62.22
 P.T. STA. = 66+87.42

EXIST. CURVE C1
 PI STA. = 64+99.65
 $\Delta = 6^{\circ} 00' 50''$ (LT)
 $D = 4^{\circ} 48' 06''$
 $R = 1,193.27'$
 $T = 62.68'$
 $L = 125.25'$
 $E = 1.65'$
 P.C. STA. = 64+36.97
 P.T. STA. = 65+62.22

- NOTE:
 ① SEE SIDEWALK RAMP DETAILS.
 ② SEE TRAFFIC SIGNAL PLANS.

LEGEND

- CURB AND GUTTER REPAIR
- MEDIAN REPAIR



FILE NAME =	USER NAME = dbullock	DESIGNED - CAS	REVISED -
Default	il 121 resurfacing\cadd\civil\0774624-sht-plan	DRAWN - DLB	REVISED -
	PLOT SCALE = 40.0000' / in.	CHECKED - JMB	REVISED -
	PLOT DATE = 8/19/2014	DATE - 8/13/14	REVISED -

STATE OF ILLINOIS
 DEPARTMENT OF TRANSPORTATION

PLAN SHEET
 FAP 320 (IL 121 / IL 48)

SCALE: SHEET 11 OF 23 SHEETS STA. TO STA.

F.A.P. RTE.	SECTION	COUNTY	TOTAL SHEETS	SHEET NO.
320	(126X)RS-2, 135RS-1	MACON	119	37
CONTRACT NO. 74624				
ILLINOIS FED. AID PROJECT				