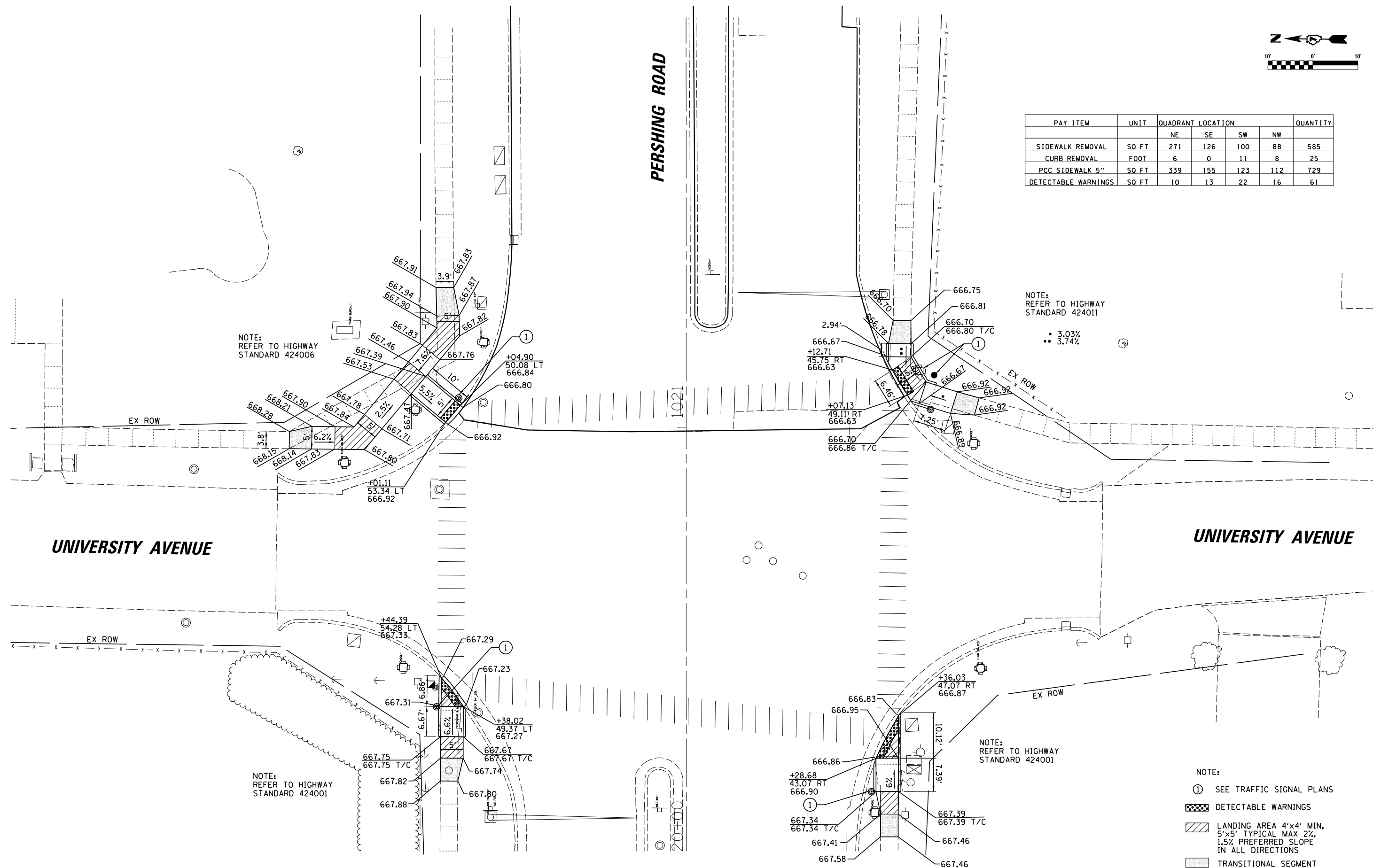


PAY ITEM	UNIT	QUADRANT LOCATION				QUANTITY
		NE	SE	SW	NW	
SIDEWALK REMOVAL	SO FT	271	126	100	88	585
CURB REMOVAL	FOOT	6	0	11	8	25
PCC SIDEWALK 5"	SO FT	339	155	123	112	729
DETECTABLE WARNINGS	SO FT	10	13	22	16	61

NOTE:
REFER TO HIGHWAY
STANDARD 424011

- 3.03%
- 3.74%



- NOTE:
- ① SEE TRAFFIC SIGNAL PLANS
 - ▨ DETECTABLE WARNINGS
 - ▨ LANDING AREA 4'x4' MIN, 5'x5' TYPICAL MAX 2%, 1.5% PREFERRED SLOPE IN ALL DIRECTIONS
 - ▨ TRANSITIONAL SEGMENT

FILE NAME =	USER NAME = dbullock	DESIGNED - CAS	REVISED -
I:\DOT\6008 - 07 Var Var\Work Order 3	IL 121 Resurfacing\CADD\Civil\0774624-sht-draw	DRAWN - DLB	REVISED -
Default	PLOT SCALE = 20.0000' / in.	CHECKED - JMB	REVISED -
	PLOT DATE = 8/21/2014	DATE - 8/13/14	REVISED -

**STATE OF ILLINOIS
DEPARTMENT OF TRANSPORTATION**

**SIDEWALK RAMP DETAILS - UNIVERSITY AVENUE
FAP 320 (IL 121/L 48)**

SCALE: SHEET 1 OF 7 SHEETS STA. TO STA.

F.A.P. RTE.	SECTION	COUNTY	TOTAL SHEETS	SHEET NO.
320	(126)RS-2, 135RS-1	MACON	119	50
CONTRACT NO. 74624				
ILLINOIS FED. AID PROJECT				