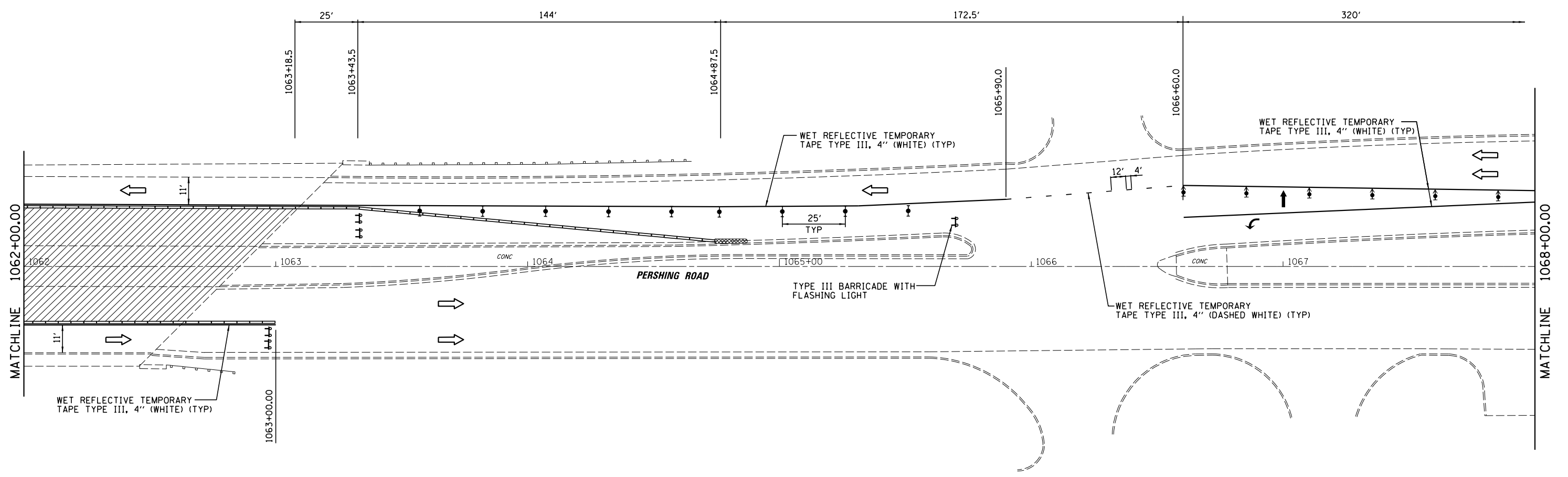




ADVANCED SIGNING AS PER  
TRAFFIC CONTROL AND  
PROTECTION STANDARD 701601



**LEGEND**

- DIRECTION INDICATOR BARRICADE WITH STEADY BURN MONODIRECTIONAL LIGHT
- TYPE II BARRICADE, DRUM OR VERTICAL BARRICADE WITH STEADY BURN BI-DIRECTIONAL LIGHT
- TYPE III BARRICADE WITH FLASHING LIGHT (2-EA.)
- WORK AREA
- ARROW BOARD
- CONSTRUCTION SIGN
- DIRECTION OF TRAFFIC
- TEMPORARY CONCRETE BARRIER
- IMPACT ATTENUATOR (TEMPORARY)

FILE NAME =	USER NAME = dbullock	DESIGNED - CAS	REVISED -
I:\DOT\6008 - 07 Var Var\Work Order 3	IL 121 Resurfacing\CADD\Civil\0774624-sht-stag	DRAWN - RLK	REVISED -
Default	PLOT SCALE = 40.0000' / in.	CHECKED - JMB	REVISED -
	PLOT DATE = 8/21/2014	DATE - 8/13/14	REVISED -

**STATE OF ILLINOIS  
DEPARTMENT OF TRANSPORTATION**

**STAGING PLAN - STAGE 2  
FAP 320 (IL 121 /IL 48)**

SCALE: SHEET 5 OF 6 SHEETS STA. TO STA.

F.A.P. RTE.	SECTION	COUNTY	TOTAL SHEETS	SHEET NO.
320	(126)RS-2, 135RS-1	MACON	119	61
CONTRACT NO. 74624				
ILLINOIS FED. AID PROJECT				