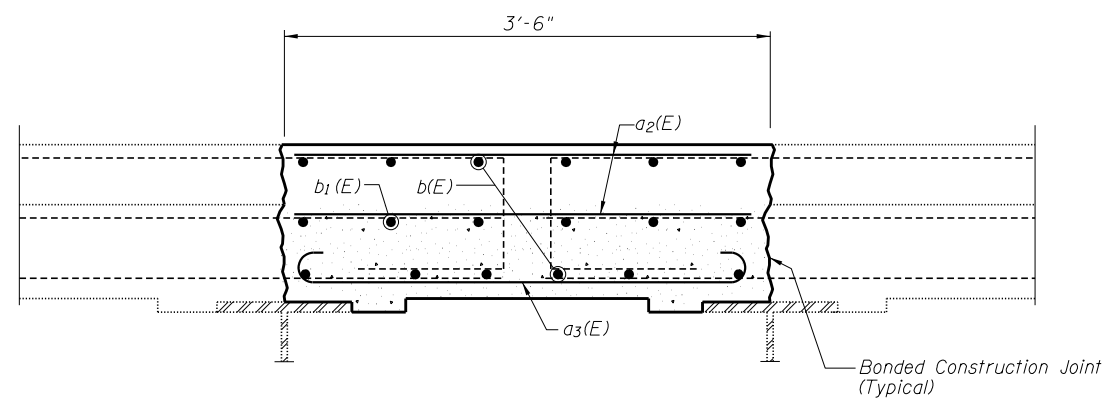
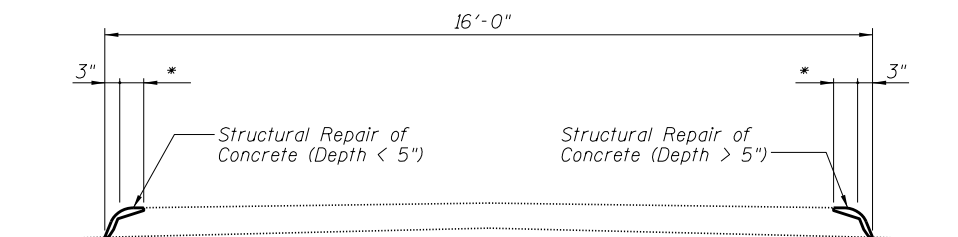


EXISTING MEDIAN LONGITUDINAL JT. CROSS SECTION



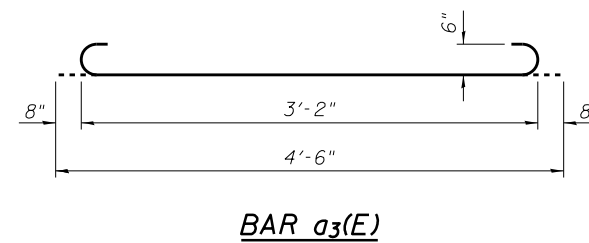
RECONSTRUCTED MEDIAN LONGITUDINAL JOINT



Note:
Quantity of repairs are estimated based on a visual survey and does not limit the amount of repair required as directed by the Engineer.

* Width as directed by the Engineer.

BRIDGE MEDIAN REPAIR
(Looking West)



BAR a3(E)

BILL OF MATERIAL

Bar	No.	Size	Length	Shape
a2(E)	492	#6	3'-2"	—
a3(E)	246	#6	4'-6"	—
b(E)	60	#5	35'-0"	—
b1(E)	36	#5	29'-8"	—
Concrete Removal			Cu. Yd.	24.8
Concrete Superstructure			Cu. Yd.	24.8
Reinforcement Bars, Epoxy Coated			Pound	7310
Structural Repair of Concrete (Depth > 5")			Sq. Ft.	338
Structural Repair of Concrete (Depth < 5")			Sq. Ft.	150

Bars indicated thus 1 x 2-#5 etc. indicates 1 line of bars with 2 lengths per line.

Note:
Hatched areas indicate concrete sections to be saw cut 3/4" prior to the removal of the concrete. Existing reinforcement shall be cleaned and incorporated into the new construction.

Saw cuts in existing median near piers shall be extended through new median section.

FILE NAME = I:\100\6008 - d7 var var\work order 3 - 11 121 resurfacing\CADD\Structural\long\jtdt1.dgn