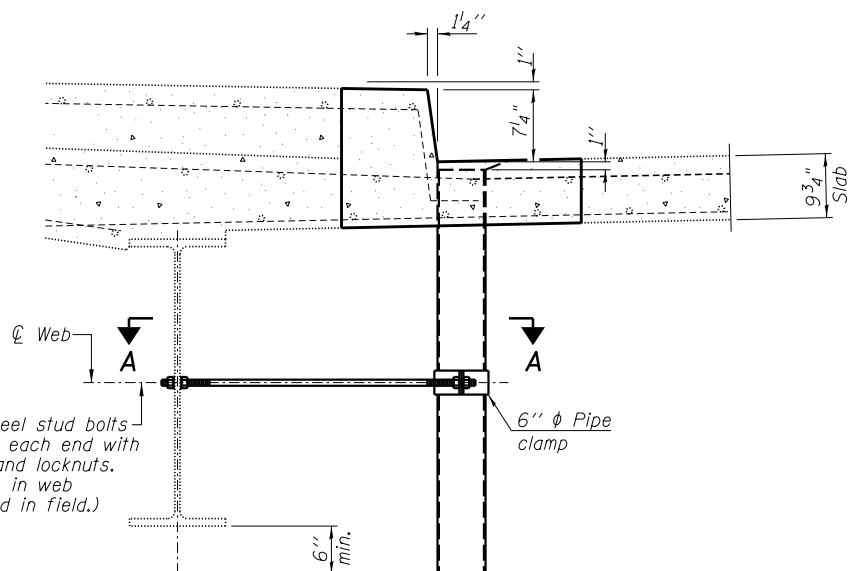
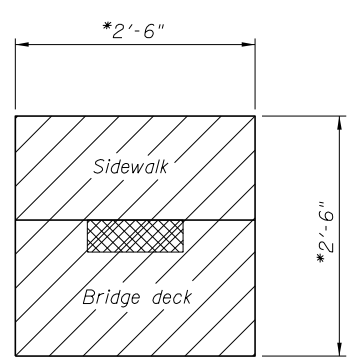


SECTION THRU EXISTING FLOOR DRAIN

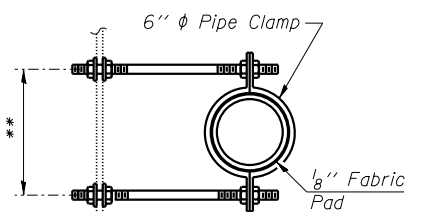


DRAIN REPLACEMENT DETAIL



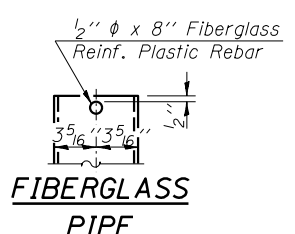
PLAN AT DECK DRAIN REMOVAL

* Concrete removal and replacement dimensions shall be determined by the Engineer based on the extent of deck deterioration of each drain.

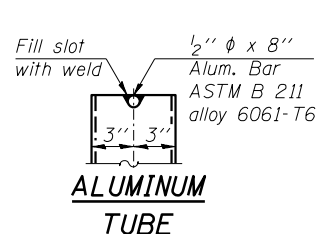


SECTION A-A

** Dimension as required by Pipe Clamp



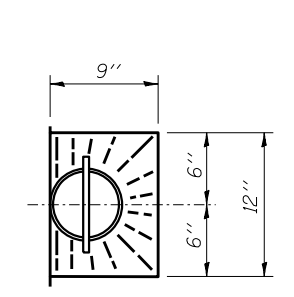
FIBERGLASS PIPE



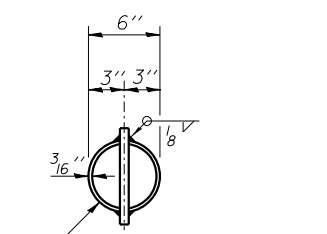
ALUMINUM TUBE

Notes:

- The exterior surfaces of the floor drains shall be cleaned and painted as specified in Section 506 of the Standard Specifications.
- Fiberglass pipe shall conform to ASTM D 2996, with short-time rupture strength hoop tensile stress of 30,000 p.s.i. minimum.
- Galvanize clamping device according to AASHTO M232. Cost of clamping device and inserts is included with Floor Drains.
- See Sheet 1 of 13 for floor drain replacement locations.
- Concrete removal and replacement quantities for floor drains are included in Deck Slab Repair (Full Depth Type II).
- Existing reinforcement in the removal area shall be cleaned and straightened and incorporated into the new construction.



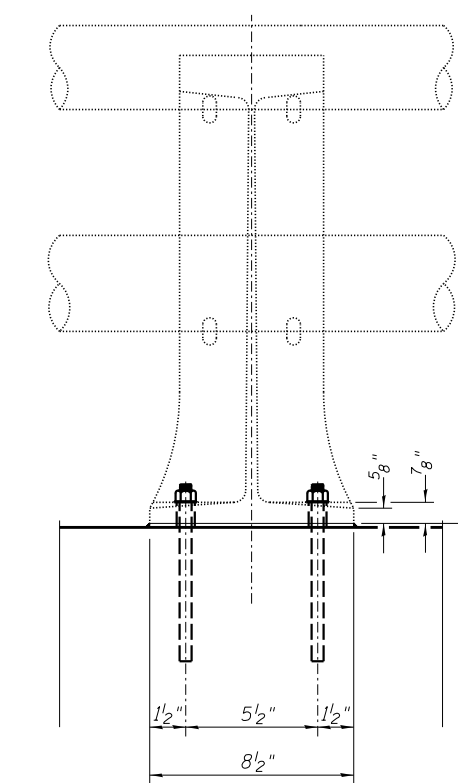
TOP PLAN



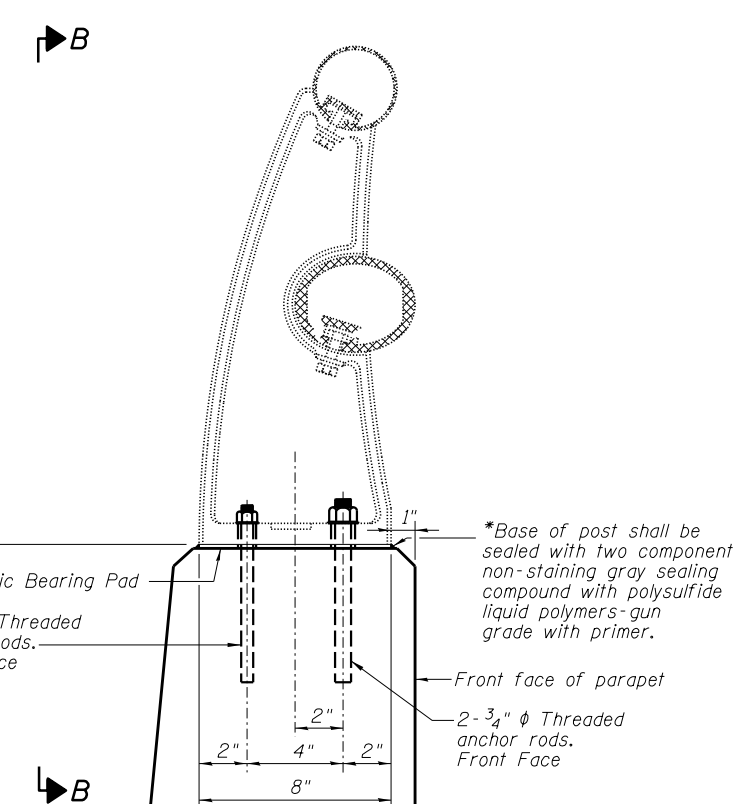
TOP PLAN
(Showing Aluminum Tube)

BILL OF MATERIAL

Item	Unit	Total
Floor Drains	Each	22
Deck Slab Repair (Full Depth Type II)	Sq. Yd.	15.4



VIEW B-B



SECTION A-A

RAIL POST DETAILS

Notes:

- The Contractor shall drill and set stainless steel anchor rods (ASTM A193, B7 or equivalent), according to Article 509.06 of the Standard Specifications. Embedment shall be according to the manufacturers specifications.
- All Posts shall be normal to parapet.
- Provide 1-1/8 inch and 2-1/8 inch Aluminum Shims for the Posts.
- Horizontal rail element & rail posts shown are for information only.

* New Rail Post anchorage devices will be required at each location where posts are connected to new construction when existing anchorage devices cannot be salvaged. Cost shall be included with Concrete Superstructure.

FILE NAME = I:\100\6008 - d7 var var-work order 3 - 1121 resurfacing\CADD\Structural\misc\dtds.dgn

USER NAME = dbullock	DESIGNED - JMB	REVISED -
PLOT TIME = 4:49:11 PM	CHECKED - ACB	REVISED -
PLOT SCALE = 16.0000' / in.	DRAWN - RLK	REVISED -
PLOT DATE = 8/19/2014	CHECKED - JMB	REVISED -

F.A.P. RTE.	SECTION	COUNTY	TOTAL SHEETS	SHEET NO.
320	(126)RS-2,135RS-1	MACON	119	107
	SN. 058-0050	CONTRACT NO. 74624		
STA.	ILLINOIS FED. AID PROJECT			