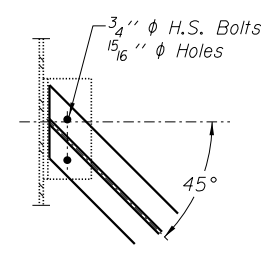


**FRAMING PLAN**

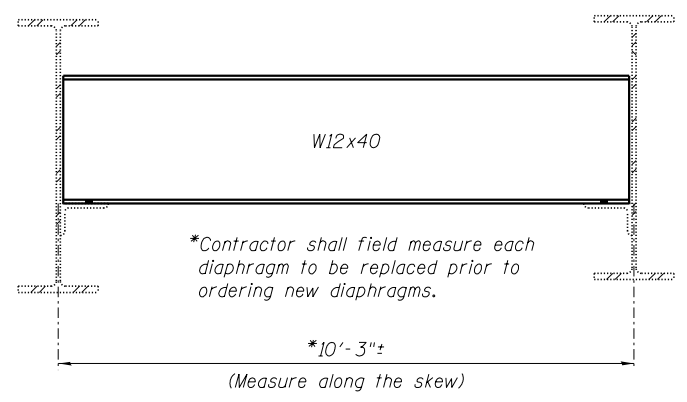


**PLAN**

**Note:**  
Two hardened washers shall be required over all oversize holes for diaphragms.  
The Contractor shall field drill holes in the new diaphragm using existing connection angles as a template. Cost included with Furnishing and Erecting Structural Steel.

**BILL OF MATERIAL**

Item	Unit	Total
Furnishing & Erecting Structural Steel	Pound	3220
Structural Steel Removal	Pound	3220



**DIAPHRAGM REPLACEMENT DETAIL**  
(8 Required)

FILE NAME = I:\1001\60008 - d7 var var-work order 3 - il 121 resurfacing\CADD\_Structural\Framing.dgn