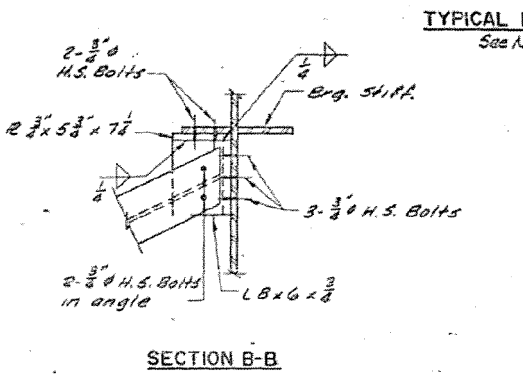
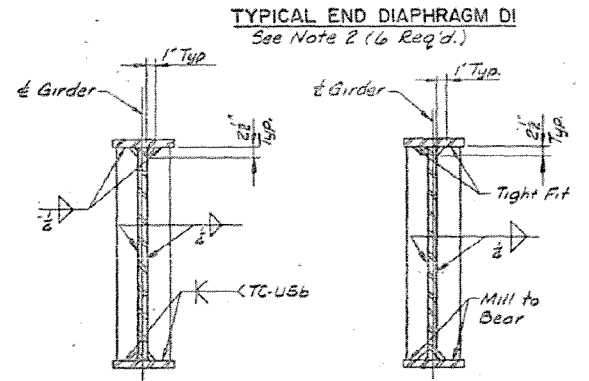
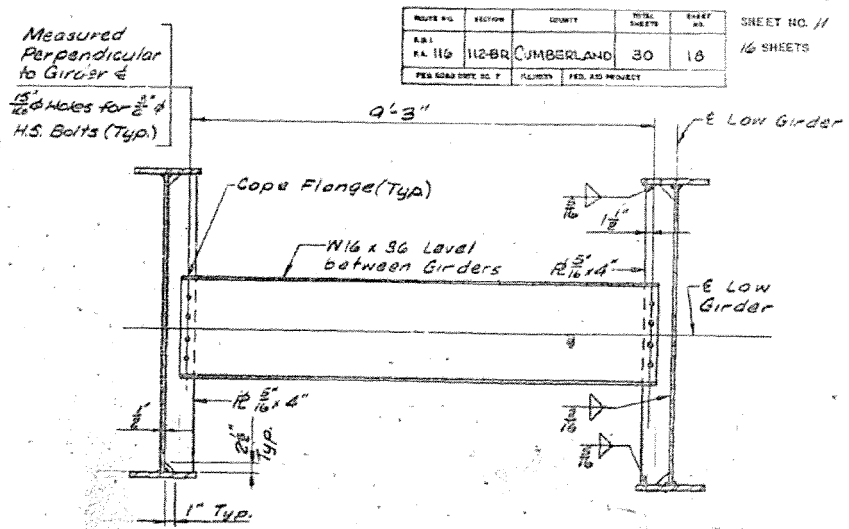
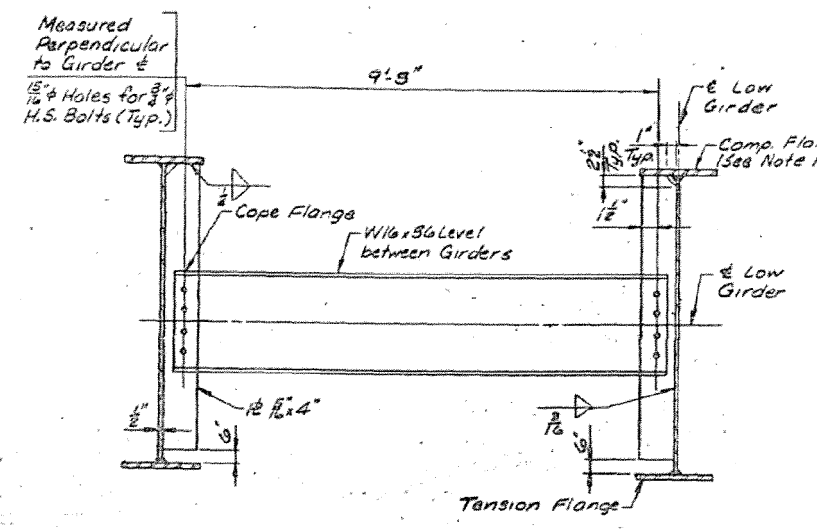
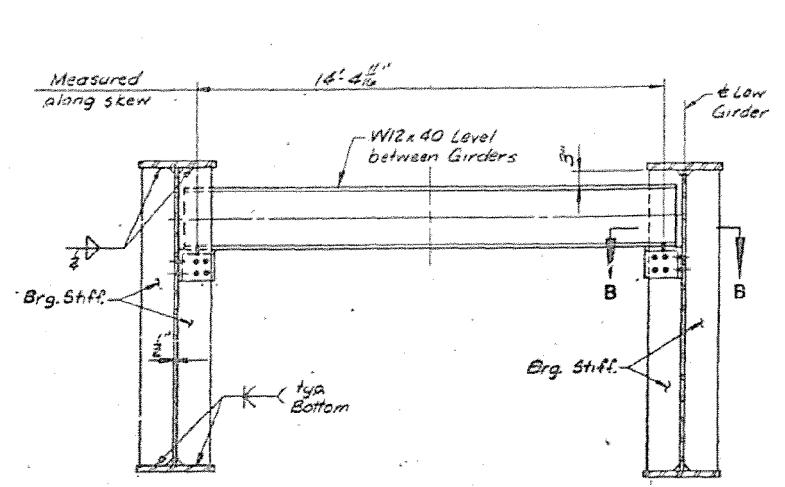
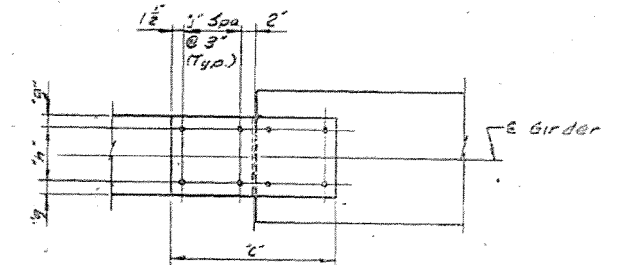
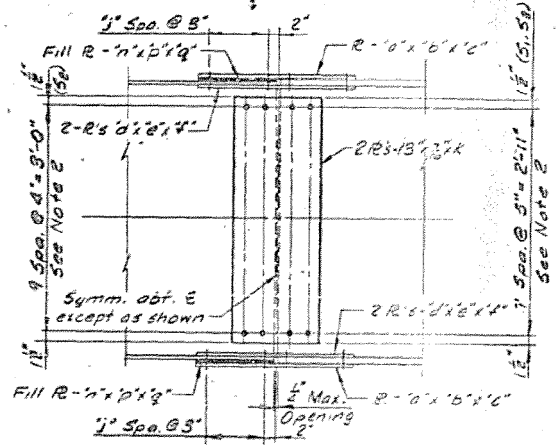


ROUTE NO.	SECTION	COUNTY	TOTAL SHEETS	SHEET NO.	SHEET NO. //
FA. RT. 116	112 BR.	CUMBERLAND	30	18	16 SHEETS
FED. ROAD DIST. NO. 7		FED. AID PROJECT			



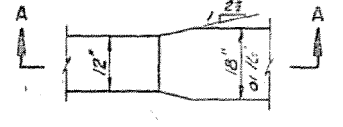
TYPICAL INTERIOR DIAPHRAGM D2
See Note 2 (36 Req'd.)

TYPICAL INTERIOR DIAPHRAGM D3
See Note 2 (9 Req'd.)



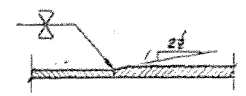
FLANGE SPLICE PLAN
(Top & Bott. Flange R)

- NOTES:**
- Weld to Compression Flange as located on Girder Elevation and weld to Tension Flange as noted.
 - Holes in Diaphragm shall be detailed with 1 1/2" holes for 3/4" H.S. Bolts and holes in splices shall be detailed with 1 1/2" holes for 3/4" H.S. Bolts in Flanges and 1 1/2" holes for 3/4" H.S. Bolts in webs. Two (2) hardened washers per bolt shall be provided for oversized holes.
 - All contact surfaces of joints for the diaphragms shall be free of paint or lacquer.



TRANSITION PLAN

FIELD SPLICE ELEVATION
See Note 2



SECTION A-A

SHOP FLANGE SPLICE

SPlice LOCATION	FLANGE	NUMBER REQUIRED	TABLE OF DIMENSIONS BOLTED FIELD SPLICE														
			a	b	c	d	e	f	g	h	j	k	n	p	q		
S1	Top	4	12"	2"	2'-1"	5"	2"	2'-1"	2 1/2"	7	3	3'-2"	12"	3/8"	1'-0 1/2"		
S1	Bott.	4	12"	2"	2'-1"	5"	2"	2'-1"	2 1/2"	7	3	3'-2"	12"	3/8"	1'-0 1/2"		
S2	Top	4	12"	2"	2'-7"	5"	2"	2'-7"	2 1/2"	7	3	3'-3"	12"	3/8"	1'-3 1/2"		
S2	Bott.	4	12"	2"	2'-7"	5"	2"	2'-7"	2 1/2"	7	3	3'-3"	12"	3/8"	1'-3 1/2"		
S3	Top	4	12"	2"	2'-1"	5"	2"	2'-1"	2 1/2"	7	3	3'-2"	12"	3/8"	1'-0 1/2"		
S3	Bott.	4	12"	2"	2'-1"	5"	2"	2'-1"	2 1/2"	7	3	3'-2"	12"	3/8"	1'-0 1/2"		

STEEL DETAILS
FA. RT. 116 SECTION 112 BR.
CUMBERLAND COUNTY
STA. 254+69.5
DESIGNED: M.C.M. CHECKED: M.G.B.
DRAWN: S.D.B. DATE: 4/15/80

Booker

NOT TO SCALE