

F.A.S. RTE.	SECTION	COUNTY	TOTAL SHEETS	SHEET NO.
749/752	101-2RS-1	JERSEY	438	1
FED. ROAD DIST. NO.	ILLINOIS	CONTRACT NO. 76789		

STATE OF ILLINOIS
DEPARTMENT OF TRANSPORTATION

DIVISION OF HIGHWAYS

**PROPOSED
HIGHWAY PLANS**

FAS ROUTE 752/749 (IL RTE 3)
SECTION 101-2RS-1
PROJECT ACRS-0752(100)
JERSEY COUNTY

WIDENING, RESURFACING, SHOULDERS, & DRAINAGE IMPROVEMENTS
C-98-021-10

INDEX OF SHEETS

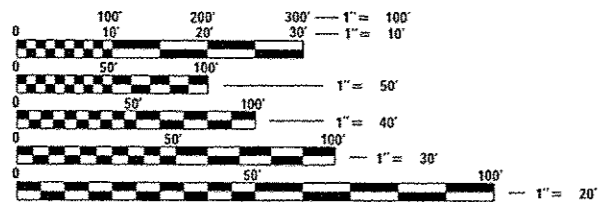
- 1 COVER SHEET
- 2 GENERAL NOTES, COMMITMENTS & HIGHWAY STANDARDS
- 3- 16 SUMMARY OF QUANTITIES
- 17- 21 TYPICAL SECTIONS
- 22- 47 SCHEDULES OF QUANTITIES
- 48- 53 ALIGNMENT, TIE POINTS & BENCHMARKS
- 54- 78 PLAN & PROFILE SHEETS
- 79- 90 REMOVAL SHEETS
- 91-107 STAGING AND TRAFFIC CONTROL
- 108-119 EROSION AND SEDIMENT CONTROL DETAILS
- 120-187 PLAT OF HIGHWAYS
- 188-193 INTERSECTION DETAILS
- 194-200 CULVERT CROSS SECTIONS
- 201-284 CULVERT DETAILS
- 285-293 MISCELLANEOUS DETAILS
- 294 WIDE LOAD SIGNING
- 295-432 CROSS SECTIONS
- 433-438 SIDE ROAD CROSS SECTIONS

DESIGN DESIGNATION
N.A.

FUNCTIONAL CLASSIFICATION
RURAL MAJOR COLLECTOR

2009 ADT = 1,850
2032 ADT = 2,200

P.V.=95.7% S.U.=2.7% M.U.=1.6%

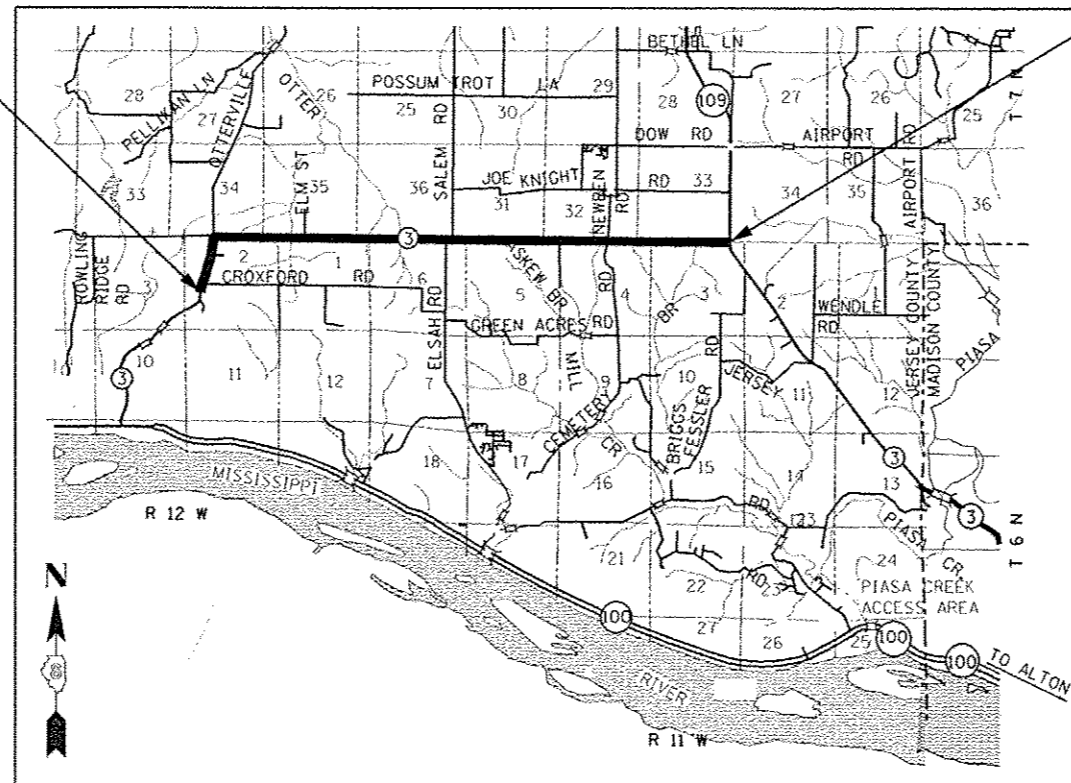


FULL SIZE PLANS HAVE BEEN PREPARED USING STANDARD ENGINEERING SCALES. REDUCED SIZED PLANS WILL NOT CONFORM TO STANDARD SCALES. IN MAKING MEASUREMENTS ON REDUCED PLANS, THE ABOVE SCALES MAY BE USED.

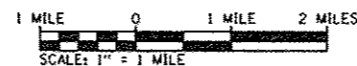
J.U.L.I.E.
JOINT UTILITY LOCATION INFORMATION FOR EXCAVATION
1-800-892-0123
OR 811

PROJECT ENGINEER: FRANK OPFER (618) 346-3175
PROJECT MANAGER: REBECCA THARP (618) 346-3323
CONTRACT NO. 76789

BEGIN PROJECT
STA. 99 + 03.00
LAT.: 38.98927
LONG.: -90.42079



LOCATION MAP



GROSS LENGTH = 32,547 FT. = 6.164 MI.
NET LENGTH = 32,547 FT. = 6.164 MI.

END PROJECT
STA. 424 + 50.41
LAT.: 38.99957
LONG.: -90.31405



LOCATION OF SECTION INDICATED THUS: - [Symbol] -

STATE OF ILLINOIS
DEPARTMENT OF TRANSPORTATION
DIVISION OF HIGHWAYS

SUBMITTED *Aug 13 2014*
John D. Baranzelli
DEPUTY DIRECTOR OF HIGHWAYS, REGION 5 ENGINEER

Oct 17 2014
John D. Baranzelli
acting ENGINEER OF DESIGN AND ENVIRONMENT

Oct 17 2014
Omer Osman
DIRECTOR OF HIGHWAYS, CHIEF ENGINEER

PLANS PREPARED BY:

SIGNED: *[Signature]*
DATE: *8-11-14*
LICENSE EXPIRES: 11-30-2015



**PRINTED BY THE AUTHORITY
OF THE STATE OF ILLINOIS**